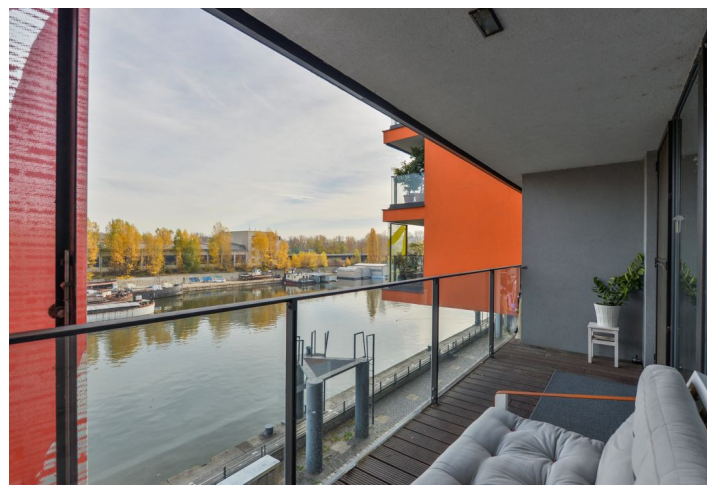
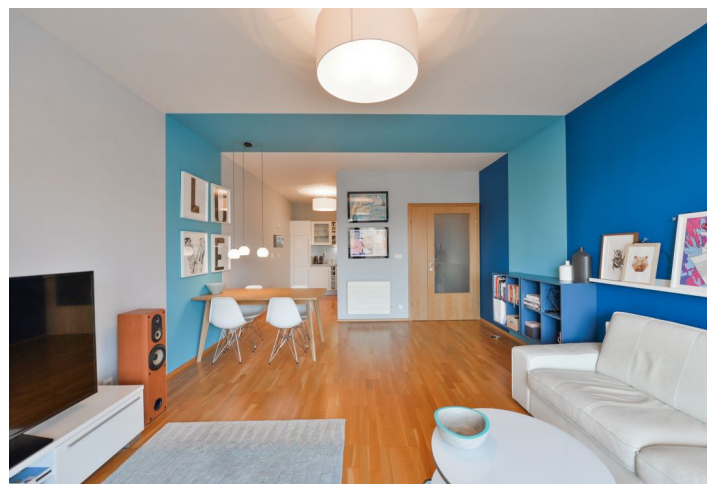


Apartment One-bedroom (2+kk)

Rented

77 m², Prague 7, Holešovice, V Přístavu



Apartment One-bedroom (2+kk)

Rented

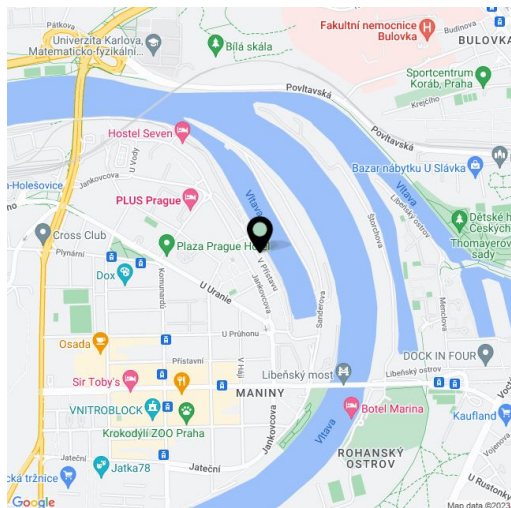
77 m², Prague 7, Holešovice, V Přístavu

Total area	87 m ²
Floor area*	77 m ²
Terrace	10 m ²
Parking	Garage parking.
Garage	Yes
Cellar	Yes
Service price	Services, water, and heating CZK 6,000 per month. Electricity is billed separately.
PENB	C
Reference number	30757
Available from	Immediately

Enjoying unobstructed views of the river and the greenery all around, this modern furnished apartment with a 10 sq. m. terrace is on the second floor of the Prague Marina residential project with a reception, security cameras, and underground parking. Located right on the Vltava riverbank in the rapidly growing Prague 7 district, with full amenities within easy reach and good connections to the city center. The Nádraží Holešovice, Palmovka, and Vltavská metro stations are a few tram stops away, and the DOX Center for Contemporary Art and the La Fabrika theater are close-by.

The interior features a living room with a fully fitted open plan kitchen and dining area, one bedroom, a bathroom (bathtub, walk-in shower, double sink, toilet), an additional separate toilet, a utility room, and an entrance hall with built-in wardrobes and storage. The **terrace** is accessible from both of the main rooms.

Featuring high quality materials and finishes, **hardwood floors**, tiles, a security entry door, floor-to-ceiling windows, central heating, a dishwasher, and a **basement storage unit**. Guaranteed parking in front of the building (free of charge) or one **garage parking** space available at CZK 2,000 per month. Available from October 2023 or earlier.



* Area of the unit according to the Civil Code. The area consists of the sum total area of the entire unit bounded by perimeter walls.