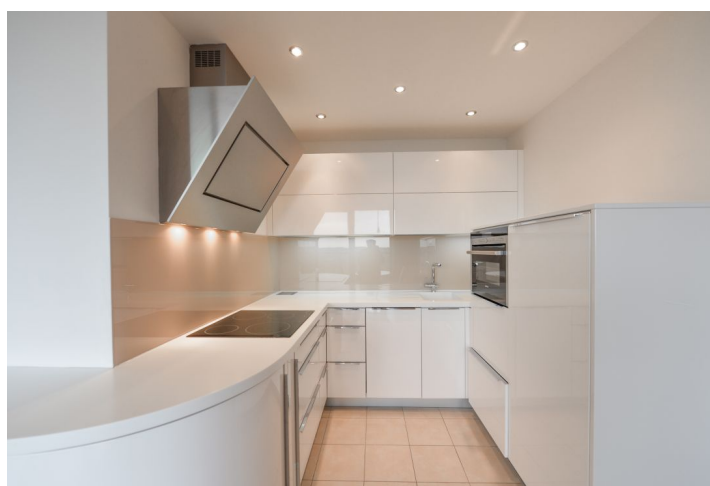


Apartment Two-bedroom (3+kk)

Rented

90 m², Prague 6, Vokovice, K Červenému vrchu



Apartment Two-bedroom (3+kk)

Rented

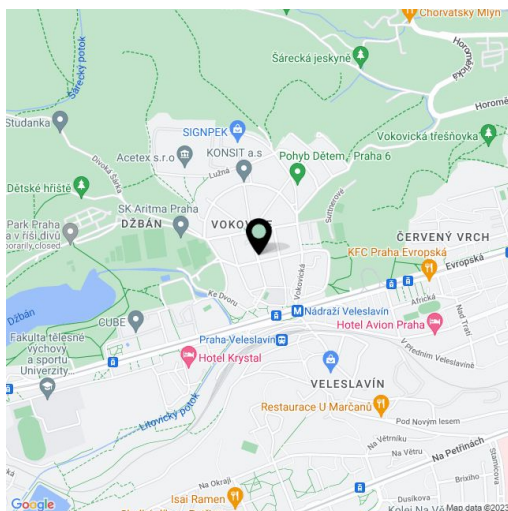
90 m², Prague 6, Vokovice, K Červenému vrchu

Total area	103 m ²
Floor area*	90 m ²
Terrace	13 m ²
Parking	Garage parking.
Garage	Yes
Cellar	Yes
PENB	C
Reference number	30711
Available from	Immediately

Benefiting from a 13 m² terrace and beautiful far reaching green views, this is a furnished 2-bedroom flat on the 7th floor of a modern gated residential complex with a reception, 24/7 security, a private park and garage parking. Located in a quiet green residential neighborhood in the immediate vicinity of the Divoká Šárka natural preserve. Quick access to the city center (two min. by walk to trams and Nádraží Veleslavín metro) and the airport, convenient to international schools, with full amenities within easy reach.

The flat features a comfortable living room with a fully fitted open kitchen and dining area, two bedrooms with built-in wardrobes, bathroom with bathtub, sink and toilet, **walk-in closet**, utility room, an additional separate toilet, and entrance hall. The **terrace** is accessible from the living room and one bedroom.

Laminated floors, tiles, security entry door, French windows, blinds, central heating, washer, dishwasher, TV, garden furniture, **cellar**, camera system, lift, chip entry to the building, children's playground nearby. One **garage parking** space included. Service charges, water and heating approx. CZK 4300 per month. Electricity is billed separately.



* Area of the unit according to the Civil Code. The area consists of the sum total area of the entire unit bounded by perimeter walls.

Apartment Two-bedroom (3+kk)

Rented

90 m², Prague 6, Vokovice, K Červenému vrchu

