

## Warehouse space

Ask for price

972 m<sup>2</sup>, Prague 5, Zličín, Na Radosti



## Warehouse space

Ask for price

972 m<sup>2</sup>, Prague 5, Zličín, Na Radosti

Total area	972 m <sup>2</sup>
Available area for rent	972 m <sup>2</sup>
Office area	354 m <sup>2</sup>
Ceiling height	—
Floor loading capacity	—
Column grid structure	—
Structure	Reinforced concrete structure
PENB	C
Reference number	30532

**618 sq.m.** of warehouse and **354 sq.m.** of office premises for lease in a Business Park situated in Prague 5. An additional 495 sq.m. of warehouse space will be available from 10/2024. The project consists of 5 warehouse, industrial and office buildings; there are 2 entrances with the gatehouse.

**Location:**

Project is located 450m from Exit "na Radosti" – direct connection to Prague Ring Road (R1) and D5 highway to Germany. Excellent access to the airport Prague Václav Havel Airport – cca 5km (10 minutes by car). Zličín Business Centre (line B) and Metropole Zličín shopping mall is 550 m from areal.

**Features and Services:**

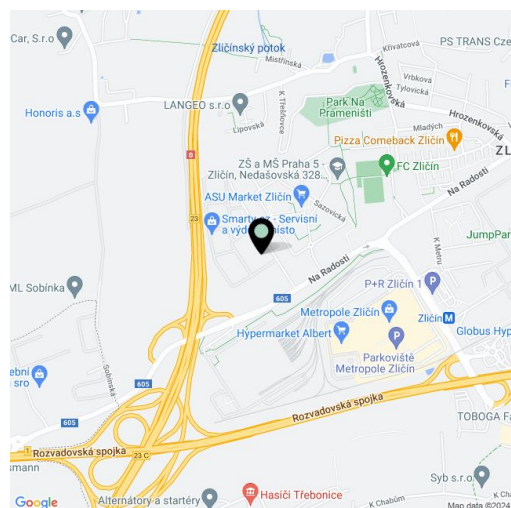
- Flexible units (Storage / Office / Light Production / Showroom)
- On-site property management
- 24/7 manned security and CCTV
- Park maintenance
- Shuttle service to the metro

**Office:**

- Lighting 500 Lux
- Air Conditioning

**Warehouse/Industrial premises:**

- 1 positioning bridge for truck
- 1 entry ramp for vans
- Lighting 200 Lux
- Clear hight 8 m

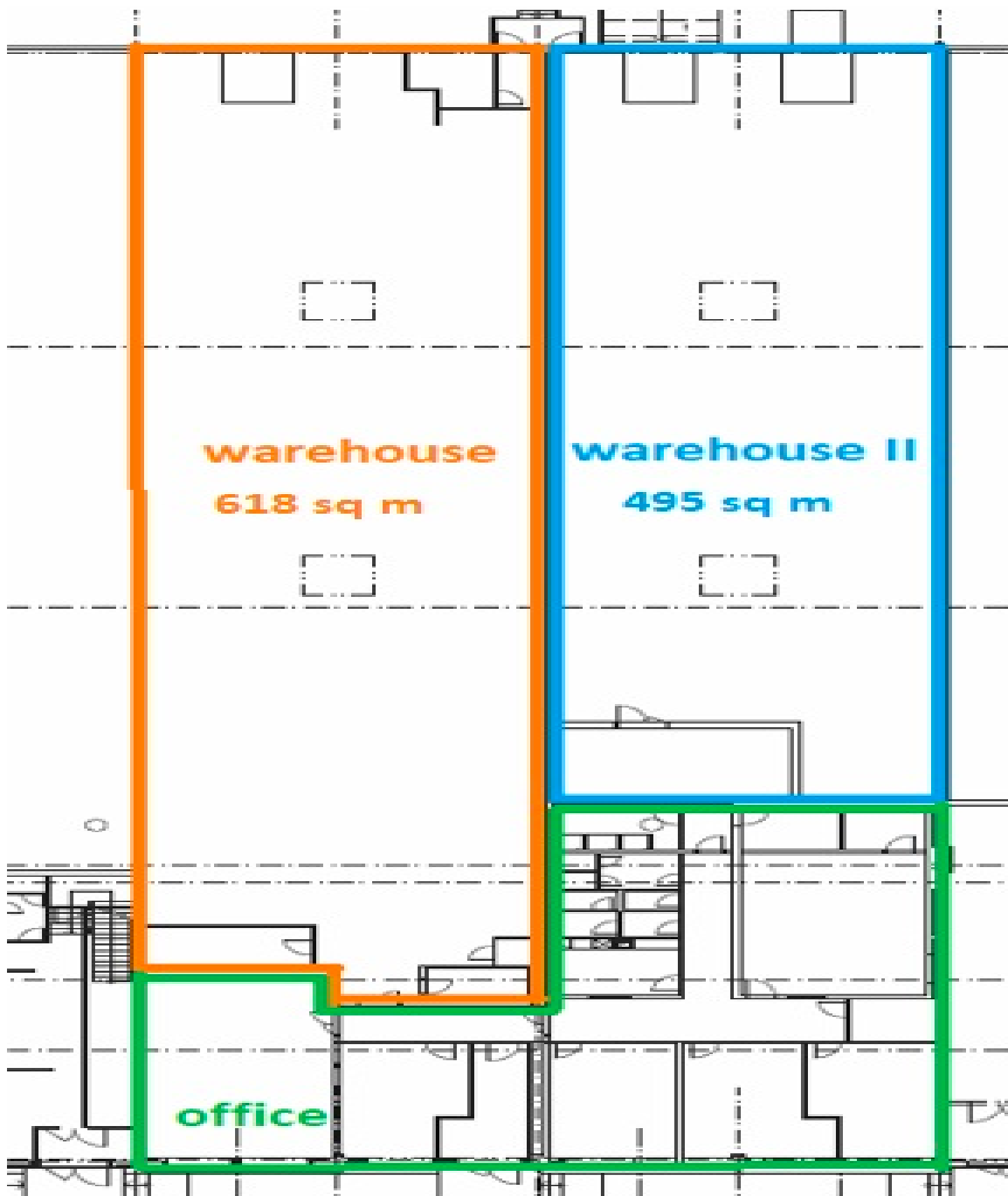


Rental and service charges listed without VAT. Lessee pays no commission.

## Warehouse space

Ask for price

972 m<sup>2</sup>, Prague 5, Zličín, Na Radosti



## Warehouse space

Ask for price

972 m<sup>2</sup>, Prague 5, Zličín, Na Radosti

