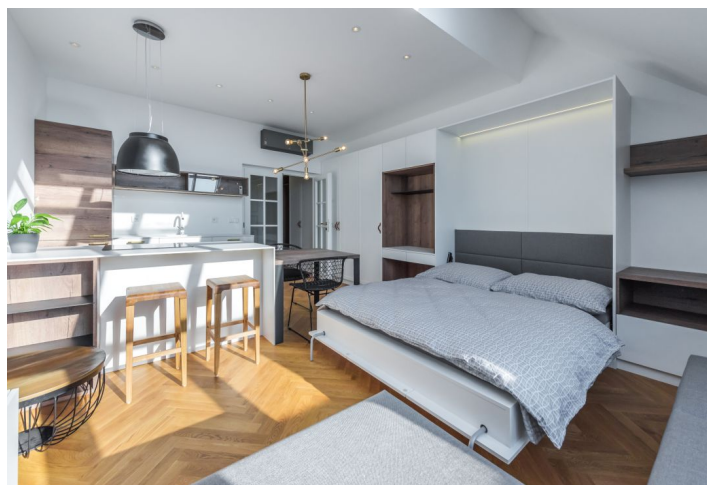
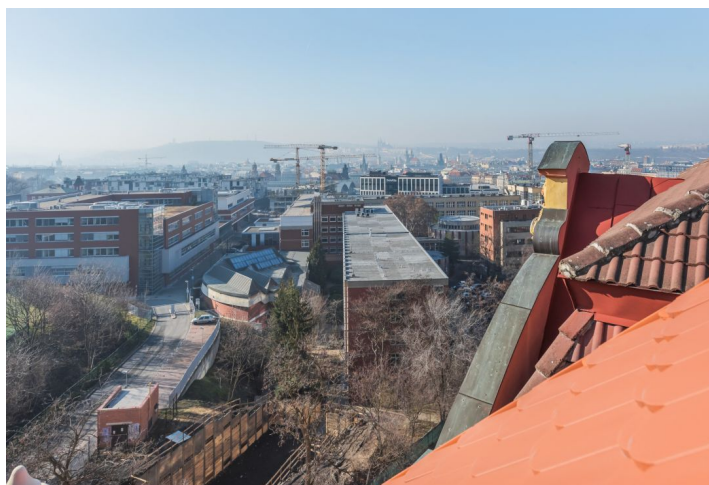




## Apartment Studio (1+kk)

Rented

39 m<sup>2</sup>, Prague 3, Žižkov, U Rajske zahrady





## Apartment Studio (1+kk)

Rented

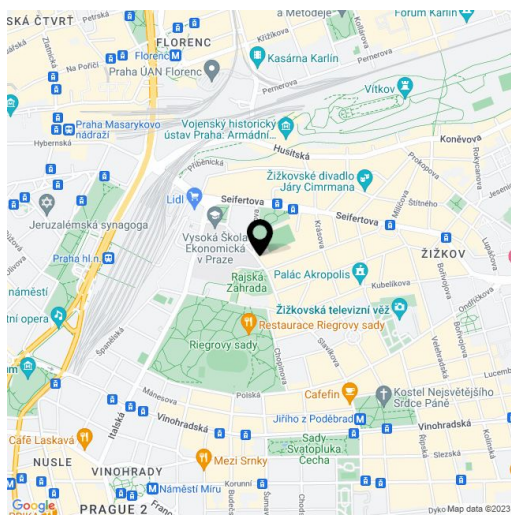
39 m<sup>2</sup>, Prague 3, Žižkov, U Rajske zahrady

Total area	39 m <sup>2</sup>
Parking	-
Cellar	Yes
Service price	Monthly deposit for services incl. Internet and deposit for electricity CZK 4,900.
PENB	D
Reference number	30493
Available from	Immediately

This attractive furnished studio boasting lovely views of Prague Castle is situated on the 6th floor of a corner residential building with an elevator, impressive common areas, and a richly decorated facade. The building, designed by the architect Horák, was constructed in 1901 in an eclectic style with Art Nouveau elements. It is conveniently located in a popular area on the border of Vinohrady and Žižkov, in the vicinity of Riegrovy Sady Park and with full amenities within easy reach.

The apartment includes a living room with a fully fitted kitchen and dining area, a bathroom with a walk-in shower and toilet, and an entrance hall.

Oak floors, tiles, air-conditioning, built-in wardrobes, custom-made designer furniture, washing machine, dishwasher, induction hob, replicas of the original wooden casement windows. Cellar available at CZK 700 per month.



\* Area of the unit according to the Civil Code. The area consists of the sum total area of the entire unit bounded by perimeter walls.



# Apartment Studio (1+kk)

Rented

39 m<sup>2</sup>, Prague 3, Žižkov, U Rajske zahrady

