



Apartment Two-bedroom (3+kk)

Rented

93 m², Prague 7, Holešovice, Letohradská





Apartment Two-bedroom (3+kk)

Rented

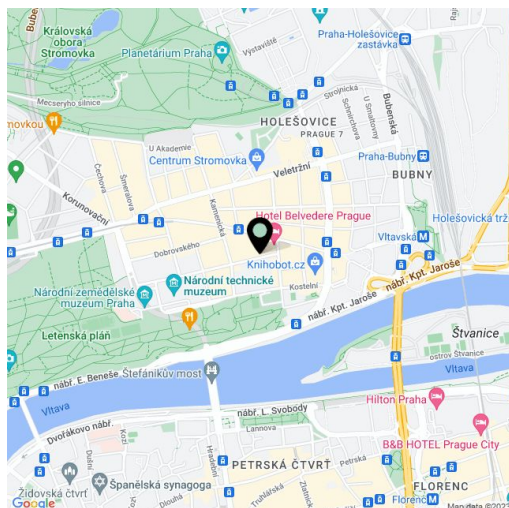
93 m², Prague 7, Holešovice, Letohradská

Total area	103 m ²
Floor area*	93 m ²
Terrace	10 m ²
Parking	Parking in the yard including.
Cellar	Yes
PENB	G
Reference number	30463
Available from	Immediately

Fully furnished duplex 2-bedroom flat with a balcony situated on the seventh floor of a renovated traditional building with a new lift. Located on a quiet street just steps from Letná park and within walking distance of the Stromovka park, the Prague Castle and the city center. Prime location with quick transportation connections (trams to Vltavská and Hradčanská metro stations), convenient to the Prague 6 international schools and the airport.

The lower floor of the apartment includes 2 bedrooms, bathroom with bathtub, shower, toilet and 2 washbasins, utility room and entrance hall. The upper floor features living room with fully fitted eat-in kitchen, workspace and entrance to terrace, and separate toilet.

Parquet floors, tiles, built-in wardrobes, washer, dishwasher, microwave, TV, air conditioning. Common building charges and water CZK 1000 per month. Gas and electricity are billed extra. Available from April 2019.



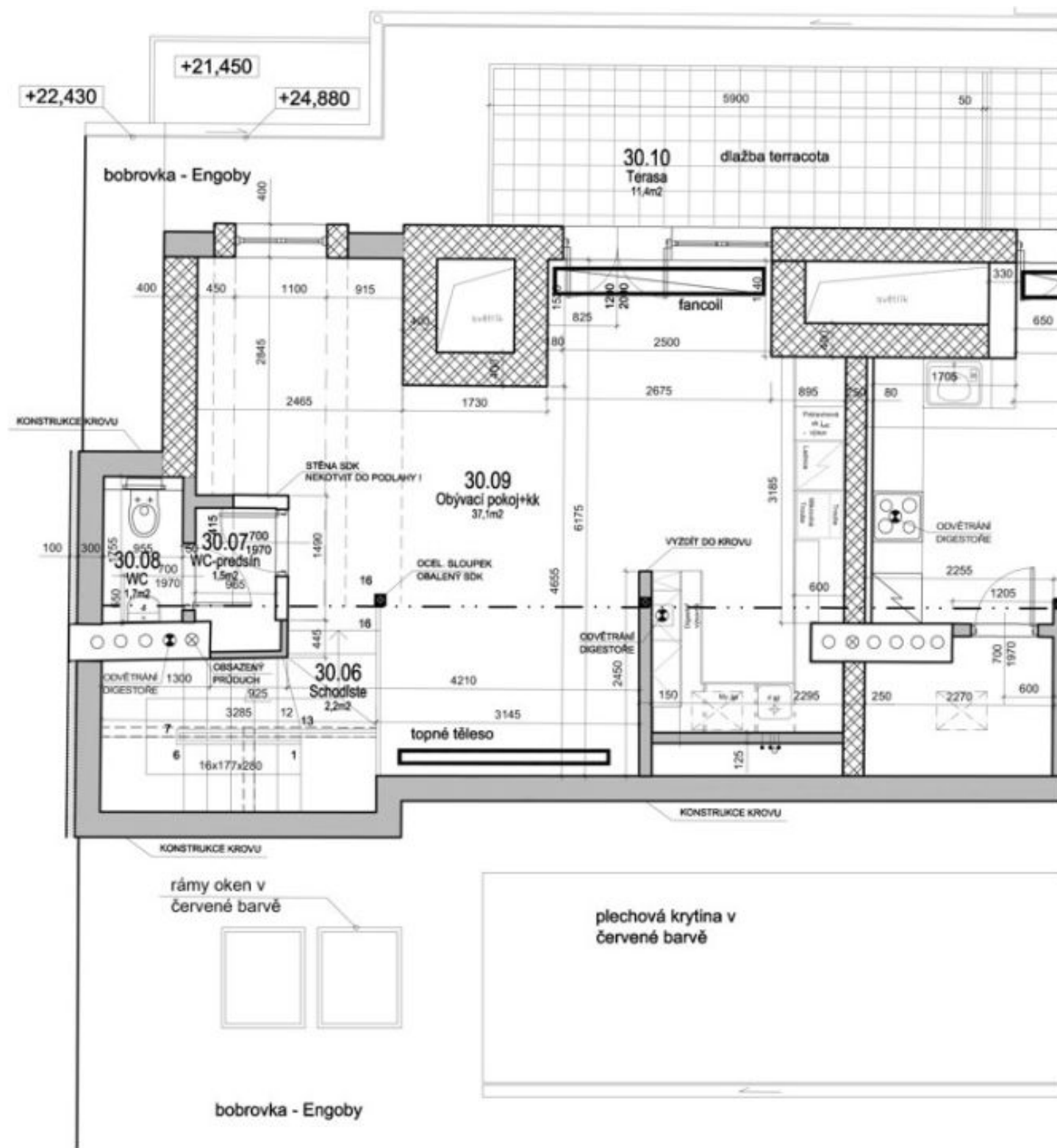
* Area of the unit according to the Civil Code. The area consists of the sum total area of the entire unit bounded by perimeter walls.



Apartment Two-bedroom (3+kk)

Rented

93 m², Prague 7, Holešovice, Letohradská





Apartment Two-bedroom (3+kk)

Rented

93 m², Prague 7, Holešovice, Letohradská

