

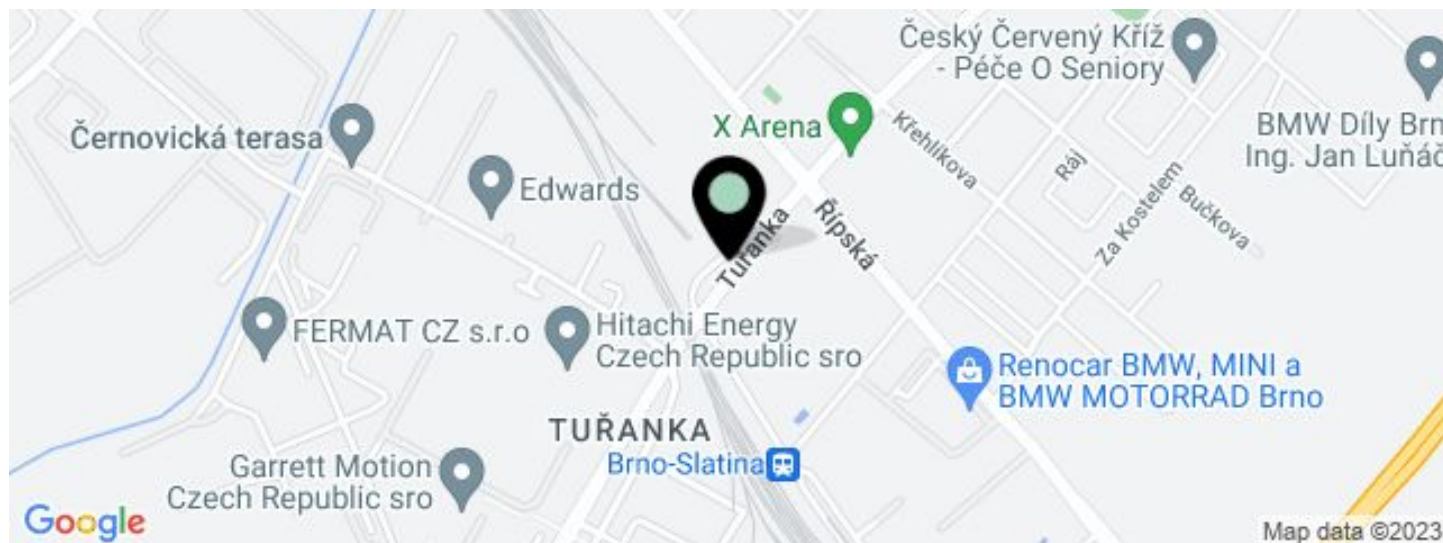
Office building

€ 11.62 / m² | CZK 290 / m²

586 m², Brno-město, Brno - Slatina, Tuřanka



Office building

€ 11.62 / m² | CZK 290 / m²586 m², Brno-město, Brno - Slatina, Tuřanka

UNIT	AVAILABLE AREA	SERVICES	PARKING	MONTHLY RENT
Office space, 8th floor	380 m ²	126 CZK monthly per m ²	Yes	€ 11.62 / m ²
Office space, 2nd floor	206 m ²	126 CZK monthly per m ²	CZK 1250 / pp / month	€ 11.62 / m ²

Office building

€ 11.62 / m² | CZK 290 / m²586 m², Brno-město, Brno - Slatina, Tuřanka

Service price	126 CZK monthly per m ²
Total building area	30 360 m ²
Tenant consumption	—
Parking	1 250 CZK
Parking service charges	—
Parking ratio	—
Certification	—
PENB	A
Reference number	30454

Offices for rent in an administrative area in the largest industrial zone of Brno. The complex consists of two ten-story buildings, which together offer 30,360 sq. m. of office space, and provides clients with modern offices as well as services such as restaurants, cafes, fitness centers, a post office, a touchless car wash, and more. Tenants can also rent storage space.

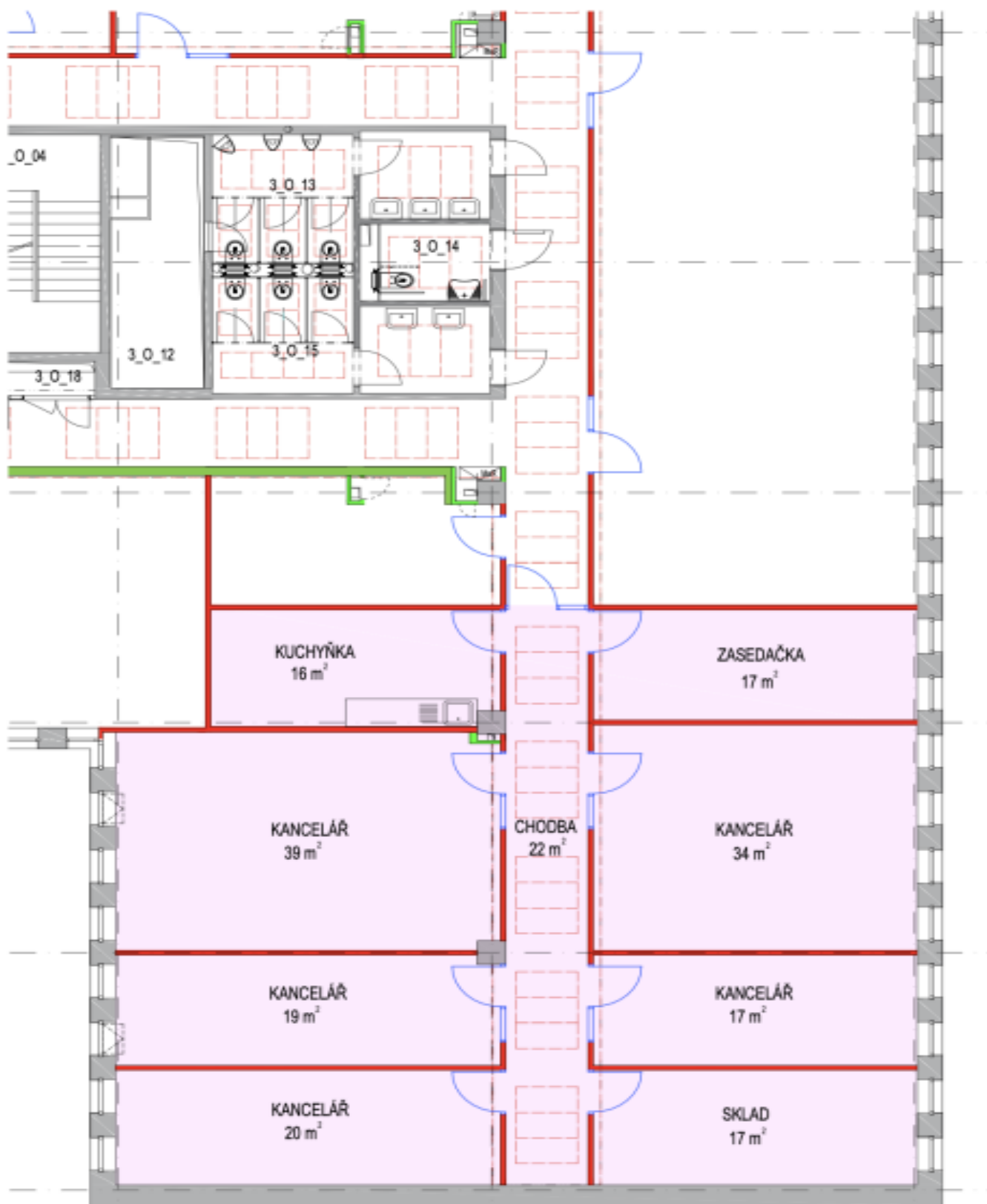
Location:

The administrative complex is located in the largest industrial zone in south-east Brno, close to the D1 motorway. Brno Airport is 2 km away and a public transport stop is right in front of the complex.

Features and services:

- 24/7 reception
- 4 high-speed elevators, 1 freight elevator
- A/C - cooling beams with filtered humidification
- air recuperation with CO2 level regulation
- triple-glazed windows
- interior blinds
- raised floors
- wireless and non-battery control elements
- 2 sanitary facilities and showers on each floor
- 8 connection points for water and waste on each floor

Rental and service charges are listed without VAT. Lessee pays no commission.

586 m², Brno-město, Brno - Slatina, Tuřanka**CELKOVÁ VÝMĚRA 190 m² nebo 206 m²**