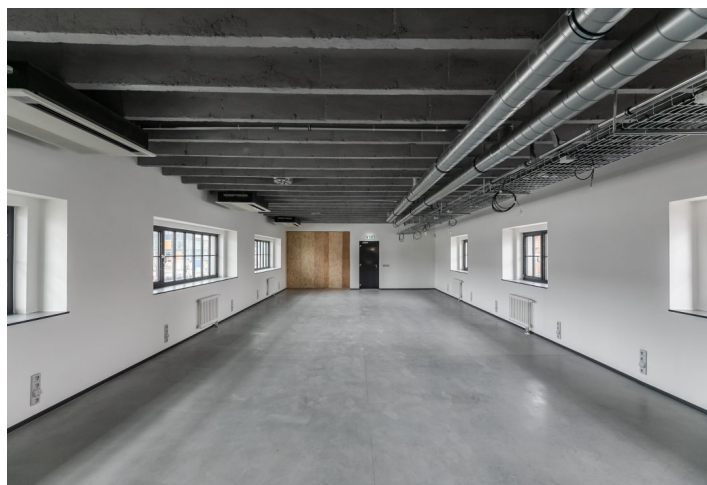
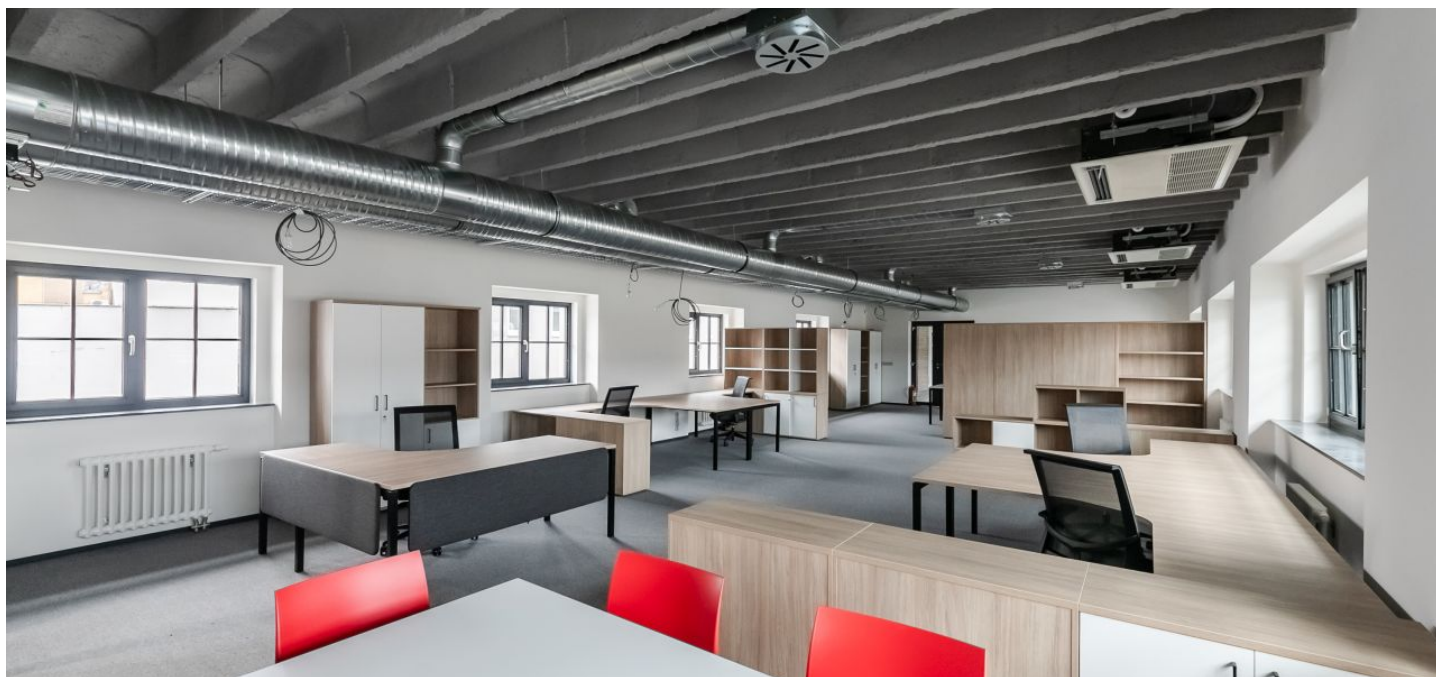


Office space

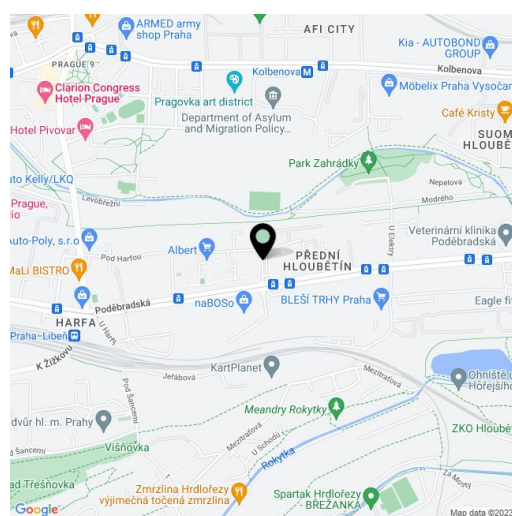
Rented

Prague 9, Vysočany, Podkovářská



Prague 9, Vysočany, Podkovářská

Service price	7 000 CZK monthly
Available area	115 m ²
Cellar	-
Parking	CZK 2 500 / pp / month - 1 parking space
PENB	G
Reference number	30431



Office space for lease on the 1st floor of an industrial complex from 1934, which has undergone a thorough reconstruction and extension of Building A.

The aim of the redevelopment is to create an area that will concentrate on the existing building structure of the former industrial buildings various functions of administration, services, non-disturbing small production and its distinctive architectural form of industrial development will commemorate the original genius loci of the locality affected by the change of land use after the extinction of the former ČKD. The repaired object will be rented as an office, service facility or small plant. Among other things there is also a gallery and a two-story corner villa suitable e.g. for a restaurant.

Location:

Good accessibility via busy Poděbradská street, at the Podkovářský tram stop. Liben Train Station and Kolbenova Metro Station (line B) are within a 10-minute walk. Outdoor parking is available directly on site.

Facilities and Services:

- Heating
- Cooling
- Ventilation
- Lighting
- Data networks in line with current technical requirements
- Inner blinds
- Floor boxes
- Cast concrete surface
- Social facilities
- Kitchens
- Passenger lifts, freight elevator
- Parking

Rental and service charges listed without VAT. Lessee pays no commission.

Office space

Prague 9, Vysočany, Podkovářská

Rented

