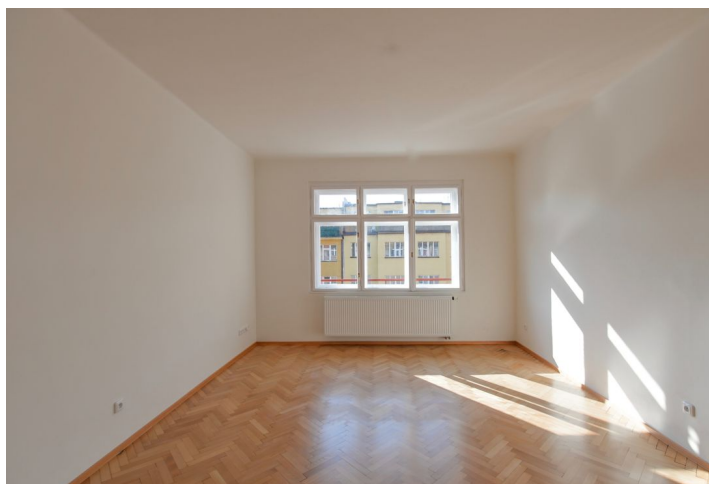


## Apartment Two-bedroom (3+kk)

Rented

100 m<sup>2</sup>, Prague 7, Holešovice, Schnirchova



## Apartment Two-bedroom (3+kk)

Rented

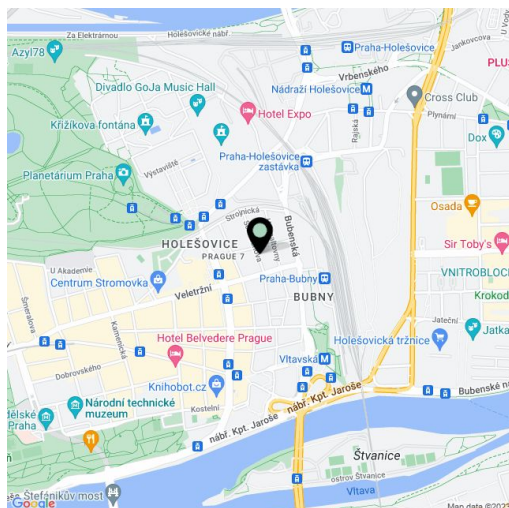
100 m<sup>2</sup>, Prague 7, Holešovice, Schnirchova

Total area	112 m <sup>2</sup>
Floor area*	100 m <sup>2</sup>
Terrace	12 m <sup>2</sup>
Parking	-
Cellar	-
PENB	G
Reference number	30428
Available from	Immediately

This is a sunny, newly renovated 2-bedroom apartment on the fifth floor of a well kept apartment building with a lift, just a few min. walk from Stromovka Park in Holešovice, Prague 7. Location with quick access to the city center, two blocks from a tram stop, and within walking distance of Vitavská metro station. Full amenities within easy reach incl. cultural venues, e.g. the National Gallery and Bio OKO cinema.

With spacious and airy rooms, the interior includes two bedrooms - one with access to the **terrace**, a living room with dining area and fully fitted open kitchen, bathroom with a walk-in shower, a separate toilet, storage / utility room, and a huge entrance hall.

Preserved original details, high ceilings, **solid wood parquet floors**, tiles, new gas boiler, new kitchen appliances incl. a dishwasher, terrace awning. Service charges and water are billed separately. Gas and electricity will be transferred to the tenant.



\* Area of the unit according to the Civil Code. The area consists of the sum total area of the entire unit bounded by perimeter walls.