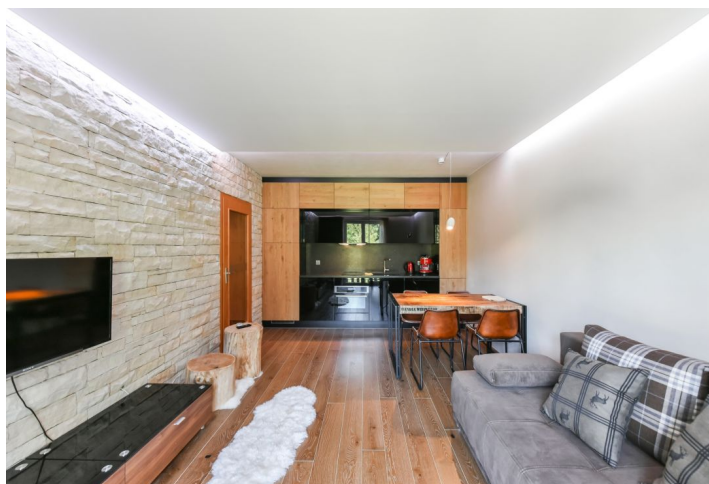


Apartment One-bedroom (2+kk)

Sold

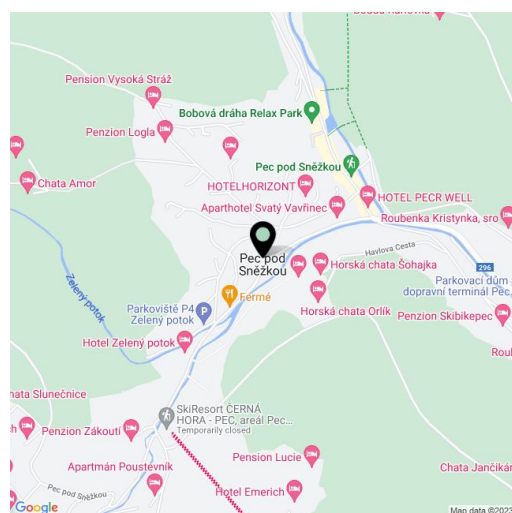
39 m², Trutnov, Pec pod Sněžkou, Pec pod Sněžkou



Apartment One-bedroom (2+kk)

Sold39 m², Trutnov, Pec pod Sněžkou, Pec pod Sněžkou

Total area	39 m ²
Parking	Parking by the building
Garage	Yes
Cellar	Yes
Service price	7 726 CZK monthly
PENB	G
Reference number	30297



* Area of the unit according to the Civil Code. The area consists of the sum total area of the entire unit bounded by perimeter walls.

This fully equipped modern mountain apartment with a balcony overlooking the garden is situated on the 1st floor of a building in the Poustevník wellness complex. It is located at the foot of Mount Javor, near the highest mountain in the Czech Republic, at an altitude of 950 m. A quiet place in a forest with a ski path from the house leading up to a ski slope.

The layout features a living room with a kitchen, a bedroom, a bathroom, and an entrance hall. The balcony is accessible from both rooms.

The interior was recently **completely renovated** (in 2017). Features include a wood/black lacquer/granite worktop, a built-in oven and a microwave oven, a dishwasher, a fridge with a freezer, and a coffee maker. **The floor is wooden**, the wall in the living room is lined with stone tiles. RGB LED lighting contributes to its **cozy atmosphere**. There is a TV and wi-fi connection. Residents have access to a **private heated indoor pool**, a **sauna**, a laundry room, a ski storage room with an electric shoe dryer, a children's playground, a game room, a trampoline, or a fireplace. The restaurant in the complex is open during the high season. Parking is possible on a private plot near the building. The building is maintained by a custodian. Apartment ownership is cooperative.

The apartment house is located on a slope above a stream valley, **just 200 meters from the cable car station to Javor** - part of a popular ski resort with 12.5 km of slopes and 10 ski lifts. The interconnected ski area of Černá hora-Pec is **the largest Czech ski resort** with 41 km of slopes on 1 ski pass. The town of Pec pod Snezkou is situated **in the middle of the KRNAP national park** and is popular in all seasons. **Biking and hiking trails** and a bobsled track are closeby. The trip from Prague takes less than 2 hours.

Interior 39 m², balcony 5 m².