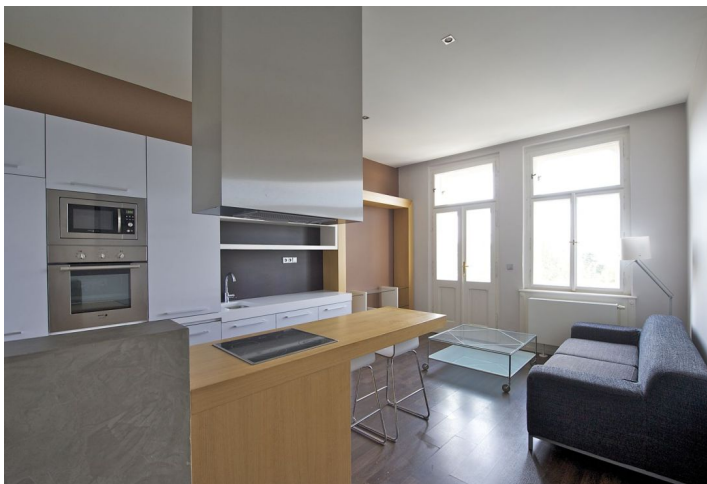


## Apartment One-bedroom (2+kk)

Rented

52 m<sup>2</sup>, Prague 10, Vršovice, Kodaňská



# Apartment One-bedroom (2+kk)

**Rented**

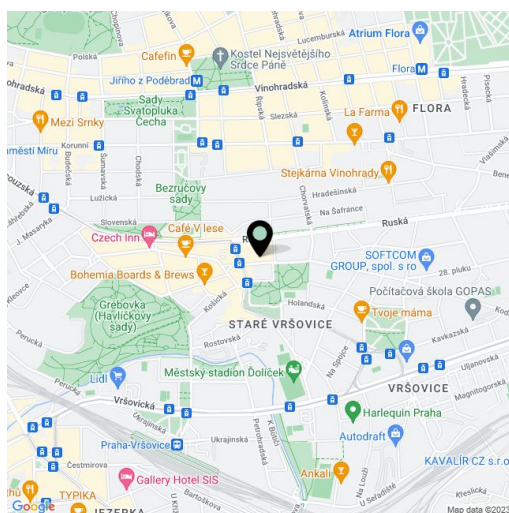
52 m<sup>2</sup>, Prague 10, Vršovice, Kodaňská

<b>Total area</b>	52 m <sup>2</sup>
<b>Parking</b>	Garage parking space included.
<b>Garage</b>	Yes
<b>Cellar</b>	-
<b>Service price</b>	5000 CZK Monthly
<b>PENB</b>	G
<b>Reference number</b>	3025
<b>Available from</b>	Immediately

**Attractive, fully furnished architect designed 1-bedroom flat with a balcony on the 3rd floor of a fully renovated historic building with lift close to Heroldovy Sady Park.**

The apartment features living room with fully fitted open plan kitchen, bedroom with walk-in closet, bathroom, and entry hall.

Built-in wardrobes, wood floors, washer, dishwasher, ceramic cooktop, Internet, satellite TV connection, video intercom. Deposit for utilities CZK 5.000/mo. Security cameras in the building. Steps from tram and bus stop, 2 stops to Náměstí Míru metro station. FURNISHED. Available from April, 2015.



\* Area of the unit according to the Civil Code. The area consists of the sum total area of the entire unit bounded by perimeter walls.