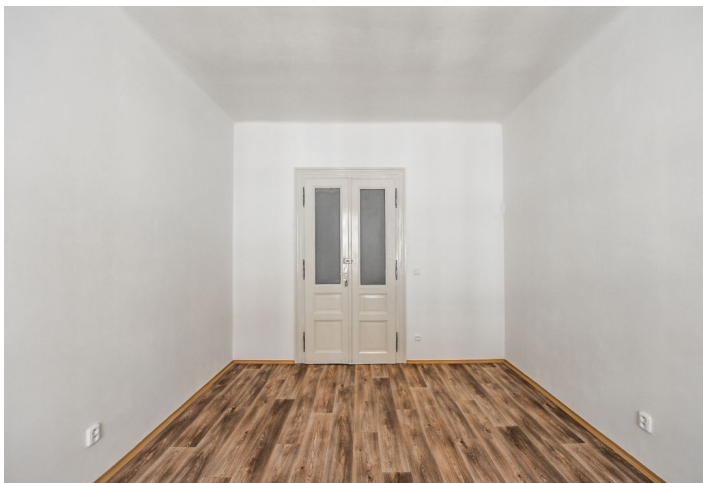


Apartment One-bedroom (2+1)

Rented

51 m², Prague 10, Vršovice, Bulharská



Apartment One-bedroom (2+1)

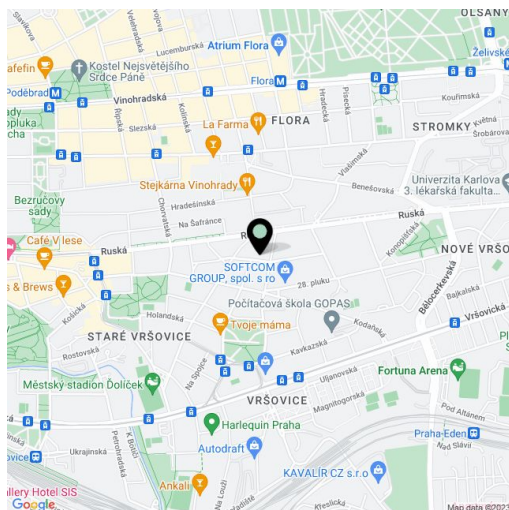
Rented51 m², Prague 10, Vršovice, Bulharská

Total area	51 m ²
Parking	-
Cellar	-
Service price	Deposit for services and water CZK 750 per month and per person. Gas and electricity will be transferred to the tenant.
PENB	Not required
Reference number	30230
Available from	Immediately

This fully refurbished apartment is situated on the 4th floor of a residential building with an elevator. Located on a quiet street on the border of Vinohrady and Vršovice, in close vicinity of the Heroldovy sady and Svatopluka Čecha parks, with a full spectrum of amenities in the area and quick access to the city center via tram and bus, only a few stops away from the Náměstí Míru and I.P. Pavlova metro stations.

The interior features one bedroom, a living room, a fully fitted kitchen in the entrance hall, and a bathroom with a walk-in shower, sink, and toilet.

Featuring airy rooms, preserved original details, high ceilings, laminate floors, tiles, a security entry door, gas heating, a washer, a dishwasher, and soundproof walls.



* Area of the unit according to the Civil Code. The area consists of the sum total area of the entire unit bounded by perimeter walls.