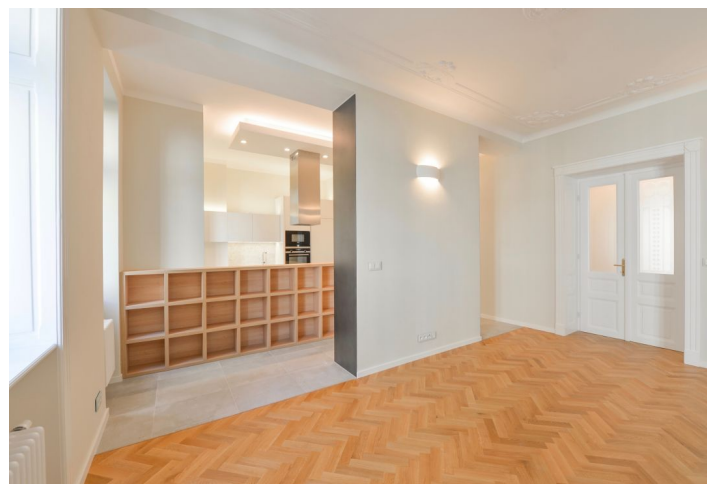


Apartment Two-bedroom (3+kk)

Rented

138 m², Prague 1, Josefov, Maiselova



Apartment Two-bedroom (3+kk)

Rented

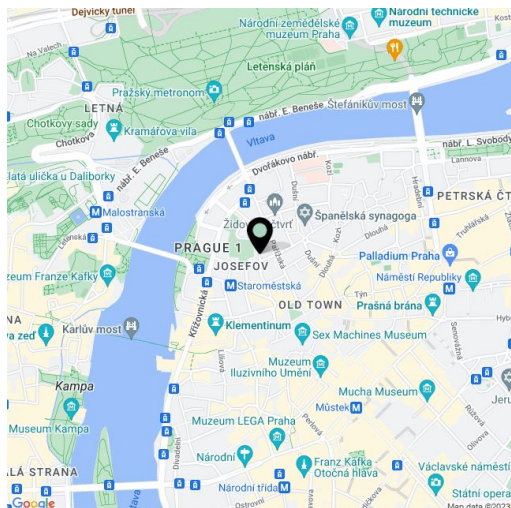
138 m², Prague 1, Josefov, Maiselova

Total area	140 m²
Floor area*	138 m²
Balcony	2 m²
Parking	Garage parking available in a nearby hotel.
Garage	Yes
Cellar	-
PENB	G
Reference number	30122
Available from	Immediately

Boasting a new high standard renovation incl. replicas of original architectural details, this 2-bedroom 2-bathroom apartment with a balcony is conveniently located in the center of historic Prague. Situated on the second floor with a lift in a fully refurbished traditional residential building, the apartment offers views of the famed Old Jewish Cemetery. In a prestigious location neighboring elegant Pařížská street, with the finest shopping and entertainment opportunities, just moments from the Vltava embankment and Old Town Square.

The interior features a huge living room with a dining area, a fully integrated kitchen, and a **balcony** facing the landscaped courtyard, two bedrooms with bathrooms (bathtub, bidet, toilet / walk-in shower, toilet), a walk-in closet, a utility area, an additional separate toilet, and an entrance hall.

Other features include high standard materials and finishes, a custom made kitchen and storage, high ceilings, stucco ornaments, **oak parquet floors**, large format tiles, new casement windows, security entry door, gas boiler, Siemens appliances incl. induction cooktop, dishwasher and microwave oven, video entry phone. **Parking** available in the nearby InterContinental Hotel. Service charges and water CZK 1,500/person/month. Gas and electricity will be transferred to the tenant.



* Area of the unit according to the Civil Code. The area consists of the sum total area of the entire unit bounded by perimeter walls.