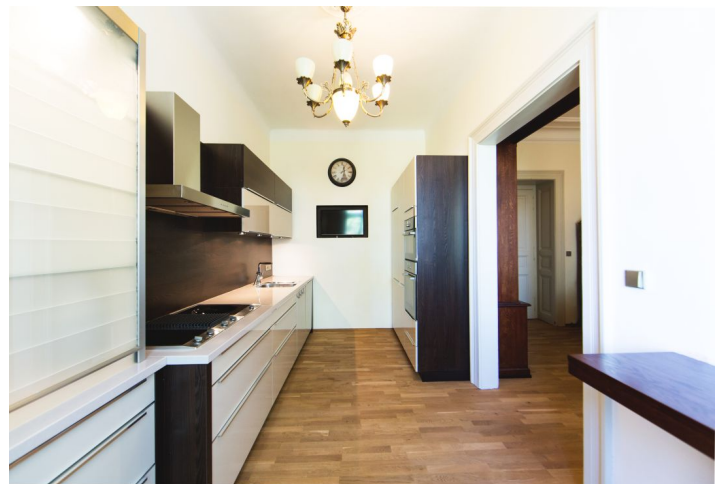


Apartment Two-bedroom (3+1)

Rented

113 m², Prague 1, Malá Strana, Újezd



Apartment Two-bedroom (3+1)

Rented

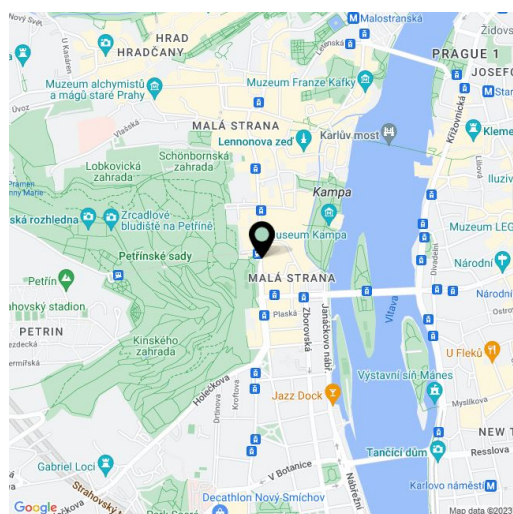
113 m², Prague 1, Malá Strana, Újezd

Total area	113 m ²
Parking	-
Cellar	Yes
PENB	G
Reference number	29795
Available from	Immediately

Boasting a wonderful location on the edge of the Petřín Hill, this fully renovated, fully furnished, generous 1-BEDROOM 2-BATHROOM APARTMENT is situated on the second floor of a traditional residential building with no lift. Centrally located right under the Petřín Hill Park, near the Petřín funicular railway, with great transportation connections, just minutes to the Old Town, Kampa Park and Charles Bridge, and a few more to the Prague Castle. A few tram stops to Nový Smíchov commercial center.

The interior features one bedroom with an adjacent storage room and **beautiful park views**, a comfortable living room, a walk-through dining room / library, a fully fitted kitchen, a large fitted walk-in closet, shower room with toilet, bathroom with a free standing bath, a separate toilet with bidet shower, and a spacious entrance hall.

Preserved original details, high ceilings, stucco ornaments, large windows, **hardwood floors**, tiles, built-in storage, **two working traditional ceramic stoves**, gas boiler, washing machine, dishwasher, microwave ovens, two TV sets, **cellar**. Service charges and water approx. CZK 1500 per month. Gas and electricity will be transferred to the tenant.



* Area of the unit according to the Civil Code. The area consists of the sum total area of the entire unit bounded by perimeter walls.