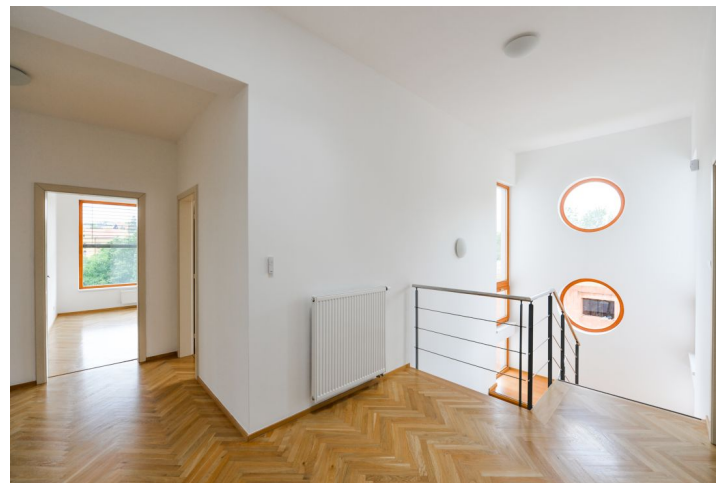


## House Seven-bedroom (8+kk)

Sold

472 m<sup>2</sup>, Prague 6, Nebušice, K Cíli



## House Seven-bedroom (8+kk)

Sold

472 m<sup>2</sup>, Prague 6, Nebušice, K Čili

|                  |                      |
|------------------|----------------------|
| Plot             | 1 067 m <sup>2</sup> |
| Foot print       | 209 m <sup>2</sup>   |
| Garden           | 858 m <sup>2</sup>   |
| Parking          | Double garage.       |
| Garage           | Yes                  |
| Cellar           | Yes                  |
| PENB             | B                    |
| Reference number | 29654                |

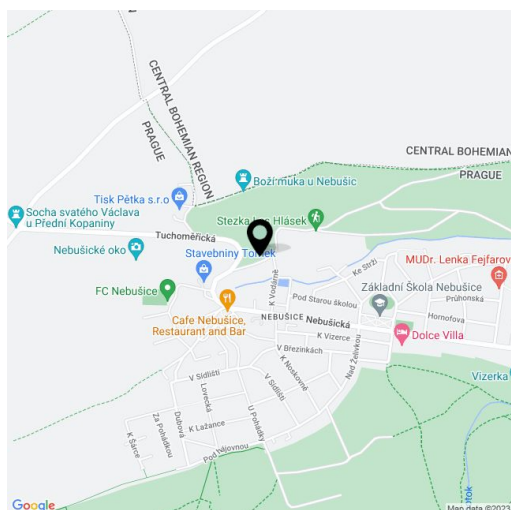
**Bright and airy modern family house with indoor swimming pool, sauna and breathtaking view stands in a quiet outskirts of Prague 6 near the natural park. The location in a blind street and orientation to the garden with grown trees provides complete privacy.**

The layout of the ground floor consists of a generous living room with an open kitchen and a **terrace**, an entrance hall with a walk-in wardrobe and a toilet and a staircase to the floor. Here is the master bedroom with an en-suite bathroom, another 3 bedrooms, study, 3 walk-in wardrobes, a bathroom, a toilet and a utility room. In the basement at the garden level, there is a **separate apartment** for guests with own entrance (living room, bedroom with walk-in wardrobe and bathroom), **indoor swimming pool with counterflow**, sauna, toilet, laundry/storage room and utility room.

Interior includes **parquet flooring**, tiled heated floors in the bathroom and by the pool. A large-format euro windows with double glazing and outdoor blinds provide plenty of light. The house has an **electronic security system**. Parking in **heated double garage**.

The elevated position allows beautiful views of the local church of St. Cyril and Methodius. The house is located near the supermarket, post office, municipal authority, pharmacy, kindergarten and 2 elementary schools. A short drive or bus is also the **prestigious international ISP school**. There are bus connections to the A Bořislavka (7 minutes) or Dejvická metro stations. Ideal location for quick travels to the airport. Almost at the house begins **Šárka-Lysolaje nature park** with hiking and cycling trails.

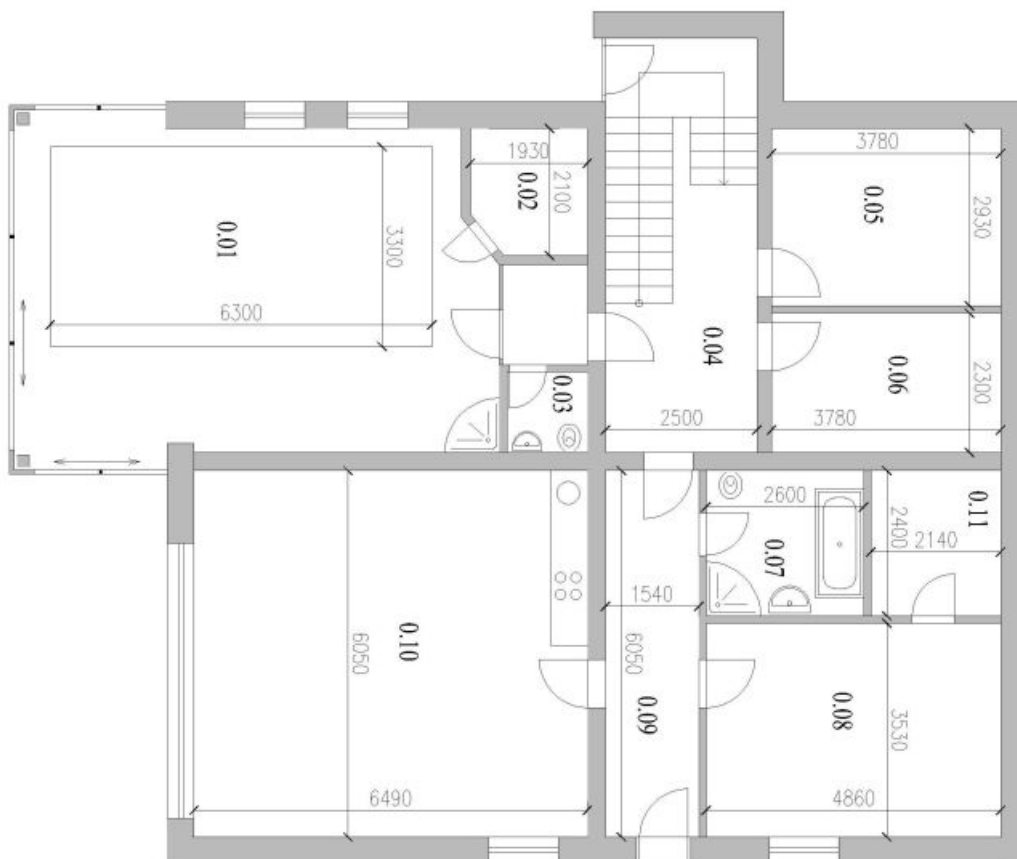
Interior 472 m<sup>2</sup>, built-up area 209 m<sup>2</sup>, garden 858 m<sup>2</sup>, plot 1067 m<sup>2</sup>.



# House Seven-bedroom (8+kk)

**Sold**

472 m<sup>2</sup>, Prague 6, Nebušice, K Cíli



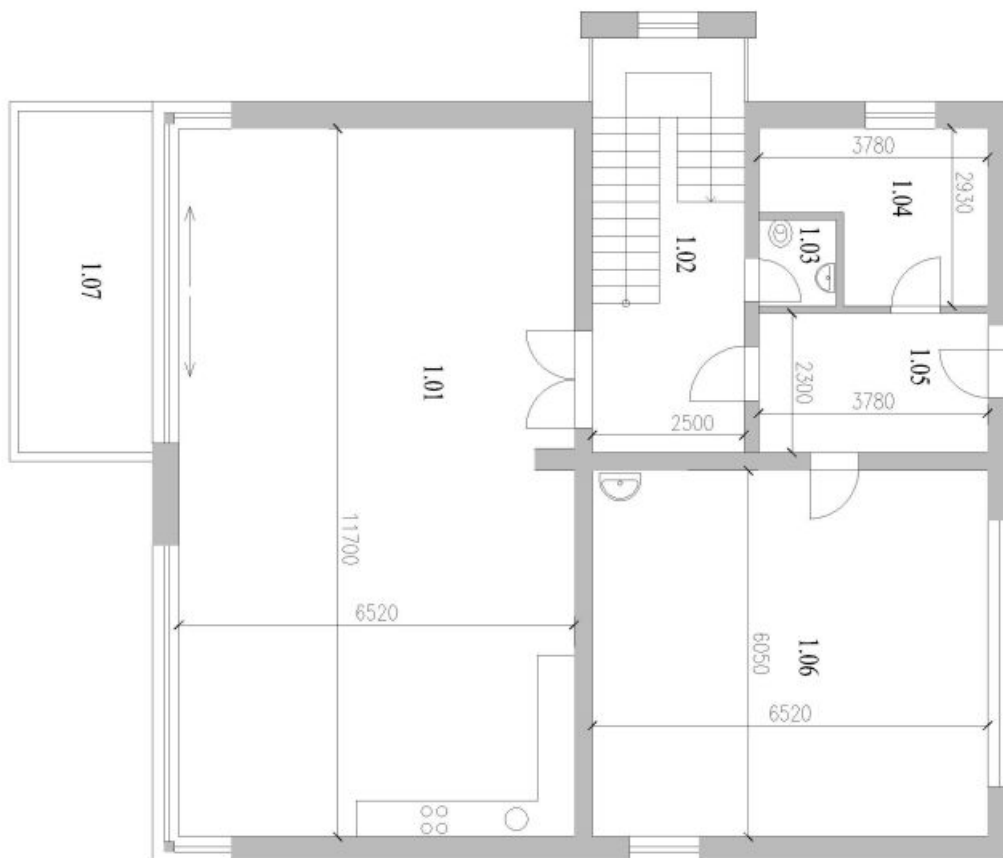
## 1. PP - Legenda místností:

| Ornament        | Učel místnosti | Plocha m <sup>2</sup> | Povrch               |
|-----------------|----------------|-----------------------|----------------------|
| 0.01            | Buženi         | 44,4                  | Dlažba               |
| 0.02            | Sauna          | 3,7                   | Dlažba               |
| 0.03            | We             | 1,6                   | Dlažba               |
| 0.04            | Schodistiše    | 17,2                  | Dlažba               |
| 0.05            | Komora         | 11,0                  | Dlažba               |
| 0.06            | Tepla místnost | 8,6                   | Dlažba               |
| 0.07            | Kompenzu       | 7,0                   | Dlažba               |
| 0.08            | Pokoj          | 17,0                  | Parquet              |
| 0.09            | Chodba         | 9,3                   | Parquet              |
| 0.10            | Pokoj + kk     | 39,5                  | Parquet              |
| 0.11            | Komora         | 5,2                   | Parquet              |
| Plocha celkem : |                |                       | 164,5 m <sup>2</sup> |

# House Seven-bedroom (8+kk)

472 m<sup>2</sup>, Prague 6, Nebušice, K Čili

**Sold**



## 1. NP - Legenda místností:

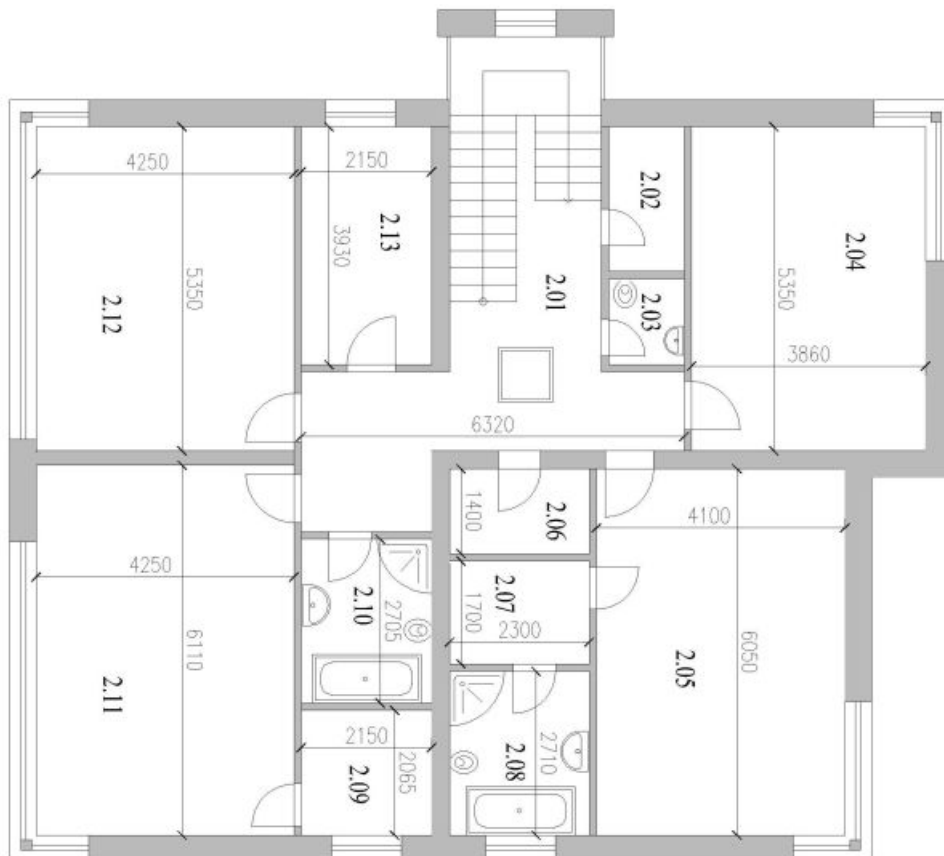
| Označení | Účel místnosti | Plocha m <sup>2</sup> | Povrch     |
|----------|----------------|-----------------------|------------|
| 1.01     | Pokoj + kk     | 76,0                  | Parquet    |
| 1.02     | Schodiště      | 17,1                  | Parquet    |
| 1.03     | Wc             | 1,8                   | Dlažba     |
| 1.04     | Spalna         | 8,9                   | Parquet    |
| 1.05     | Vstupní hala   | 8,7                   | Parquet    |
| 1.06     | Garáž          | 39,5                  | Dlažba     |
| 1.07     | Terasa         | 12,4                  | Dřev. rošt |

Plocha celkem bez terasy : 152,0 m<sup>2</sup> + 12,4 m<sup>2</sup> terasa

# House Seven-bedroom (8+kk)

Sold

472 m<sup>2</sup>, Prague 6, Nebušice, K Cíli



## 2. NP - Legenda místností:

| Označení       | Účel místnosti | Plocha m <sup>2</sup> | Povrch  |
|----------------|----------------|-----------------------|---------|
| 2.01           | Schodiště      | 25,7                  | Parquet |
| 2.02           | Komnora        | 2,9                   | Parquet |
| 2.03           | We             | 1,5                   | Dlahba  |
| 2.04           | Pokoj          | 20,8                  | Parquet |
| 2.05           | Ložnice        | 24,9                  | Parquet |
| 2.06           | Samna          | 3,2                   | Parquet |
| 2.07           | Samna          | 3,9                   | Parquet |
| 2.08           | Kopecelna      | 6,2                   | Dlahba  |
| 2.09           | Samna          | 4,4                   | Parquet |
| 2.10           | Kopecelna      | 5,8                   | Dlahba  |
| 2.11           | Pokoj          | 25,9                  | Parquet |
| 2.12           | Ložnice        | 22,8                  | Parquet |
| 2.13           | Pokoj          | 8,0                   | Parquet |
| Plocha celkem: |                | 156,0 m <sup>2</sup>  |         |