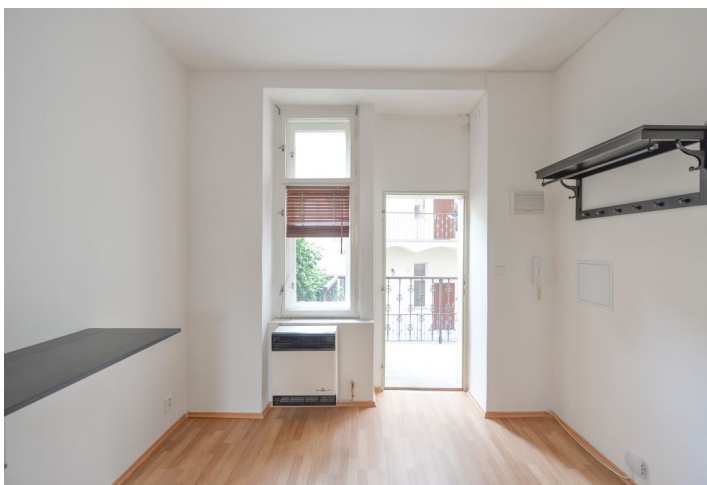
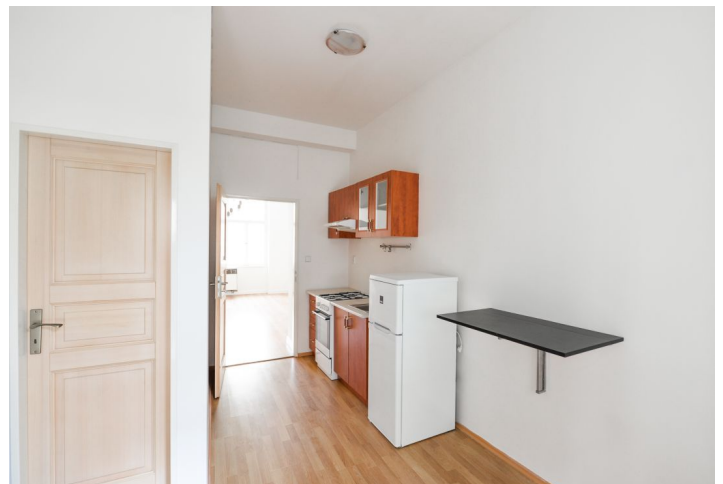


Apartment Studio (1+kk)

Rented

37 m², Prague 2, Vyšehrad, Vratislavova



Apartment Studio (1+kk)

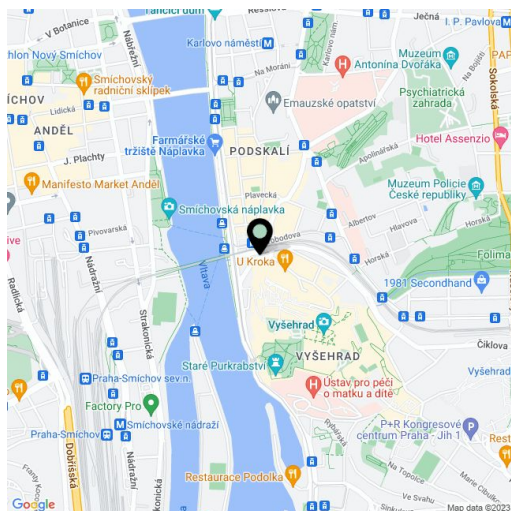
Rented37 m², Prague 2, Vyšehrad, Vratislavova

Total area	37 m ²
Parking	-
Cellar	-
PENB	G
Reference number	29634
Available from	Immediately

Studio apartment below the Vyšehrad Castle gardens. This partially renovated studio is situated on the first floor of a fully renovated building with a lift, with a children's playground just next door and a green park nearby. Quiet residential street within walking distance of the Vltava embankment, with quick tram connections to the city center and the Palackého / Karlovo náměstí metro station, and with full amenities within easy reach.

The interior features a living room / bedroom facing the quiet street, bathroom with a walk-in shower and toilet, and entrance hall with a fully fitted walk-through kitchen. The flat is accessible from a courtyard terrace.

Preserved original details, high ceilings, laminated floors, tiles, blinds, "WAW" gas heating, electric boiler, washer. Service charges and water CZK 700/person/month. Electricity and heating bills will be transferred to the tenant.



* Area of the unit according to the Civil Code. The area consists of the sum total area of the entire unit bounded by perimeter walls.