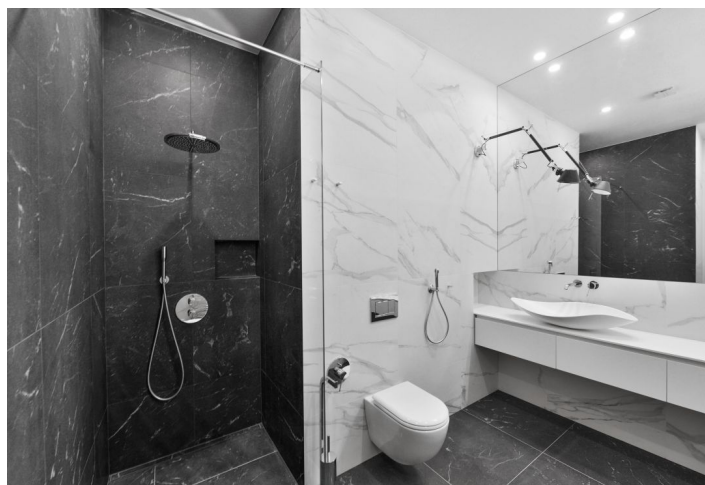
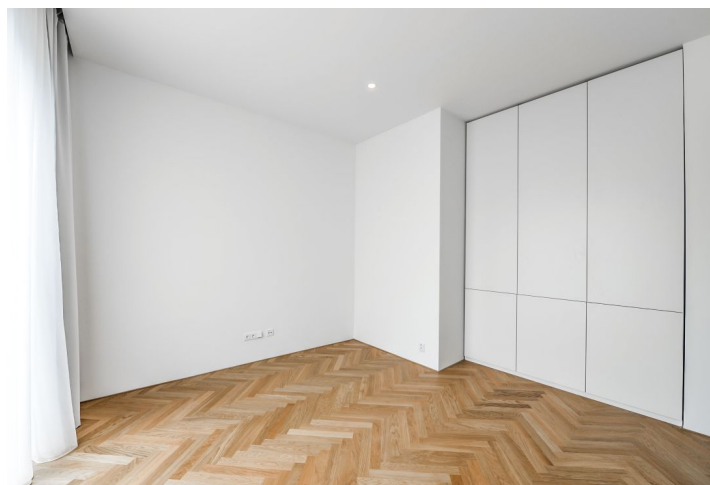


## Apartment Two-bedroom (3+kk)

Rented

100 m<sup>2</sup>, Prague 2, Vinohrady, Italská



## Apartment Two-bedroom (3+kk)

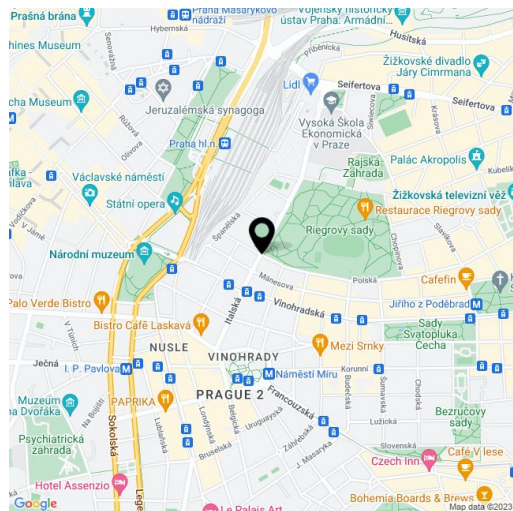
Rented

100 m<sup>2</sup>, Prague 2, Vinohrady, Italská

Total area	107 m <sup>2</sup>
Floor area*	100 m <sup>2</sup>
Terrace	7 m <sup>2</sup>
Parking	-
Cellar	-
PENB	G
Reference number	29625
Available from	Immediately

This is a quality 2-bedroom attic apartment with a 7 m<sup>2</sup> terrace, on the fifth top floor of a traditional residential building that has undergone complete renovation, with preserved original details and a new lift. Well located in a highly sought after residential neighborhood in the immediate vicinity of the lovely Riegrovy sady Park. Location with full amenities within easy reach, great transportation connections, a few minutes to the city center - within walking distance of Wenceslas Square and Muzeum metro station.

The interior features an **air-conditioned** living room with a fully fitted open kitchen and atelier windows offering views of the Petřín Hill and the Prague Castle. There are two separate bedrooms with access to a shared **terrace** overlooking the quiet courtyard, bathroom (walk-in shower, sink, toilet, bidet shower), and an open entrance hall with built-in wardrobes and storage. Deposit for service charges and water: CZK 800/person/month. Gas and electricity are billed separately. Available from April 1st, 2020.



\* Area of the unit according to the Civil Code. The area consists of the sum total area of the entire unit bounded by perimeter walls.

## Apartment Two-bedroom (3+kk)

Rented

100 m<sup>2</sup>, Prague 2, Vinohrady, Italská

