

## House Six-bedroom (7+1)

Ask for price

500 m<sup>2</sup>, Prague 4, Hodkovičky, Nad Údolím



# House Six-bedroom (7+1)

[Ask for price](#)500 m<sup>2</sup>, Prague 4, Hodkovičky, Nad Údolím

Plot	627 m <sup>2</sup>
Foot print	230 m <sup>2</sup>
Garden	397 m <sup>2</sup>
Parking	Double garage
Garage	Yes
Cellar	Yes
PENB	G
Reference number	29614

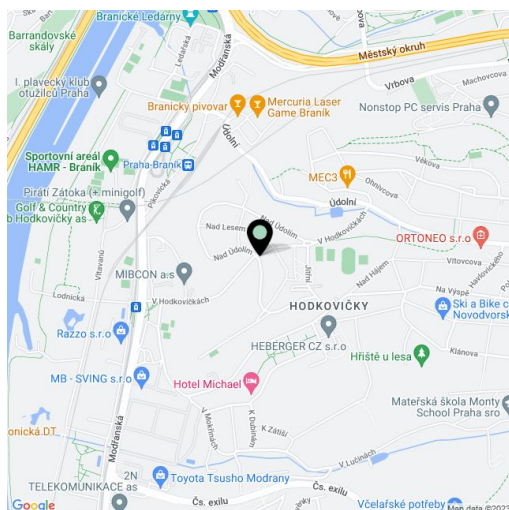
**This spacious villa from the 1930s with an indoor pool and a double garage, set in a picturesque garden, is in a quiet location with traditional residential buildings and minimal further development.**

The house consists of a basement, 2 above-ground floors, an attic floor, and a **wooden glass-walled tower**. On the ground floor, there is a living area with a kitchen, a hall, a bathroom, a guest toilet, and an entrance hall. The 1st floor consists of a rest zone with 3 bedrooms, a hall, 2 bathrooms, a separate toilet, a **dressing room, and a loggia**. On the 2nd floor, there is a studio, a **terrace**, a room, a bathroom, and a **staircase leading to a study in the tower**. In the basement, there is a separate apartment unit, a gym, a cellar, and a utility room.

The house is **in a state requiring reconstruction**. It features plastic insulated double-glazed windows; heating by a Vaillant gas boiler. **Parking is available in a double garage** with direct access from the street.

**The street sees almost no traffic** and there are family homes with gardens on one side and generous greenery on the other. Transport connection is provided by buses, which go to **the KačeroV metro station (line C)** or to the Nádraží Braník tram stop. There is also a train with a direct connection to the Main Railway Station (17-minute ride). A kindergarten and an elementary school are within walking distance. A shopping center, several restaurants, banks, a health center, and a hospital are a short drive away. There is also a popular bike and inline trail along the Vltava River and a **golf club**.

Floor area 500 m<sup>2</sup>, built-up area 230 m<sup>2</sup>, garden 397 m<sup>2</sup>, land 627 m<sup>2</sup>.







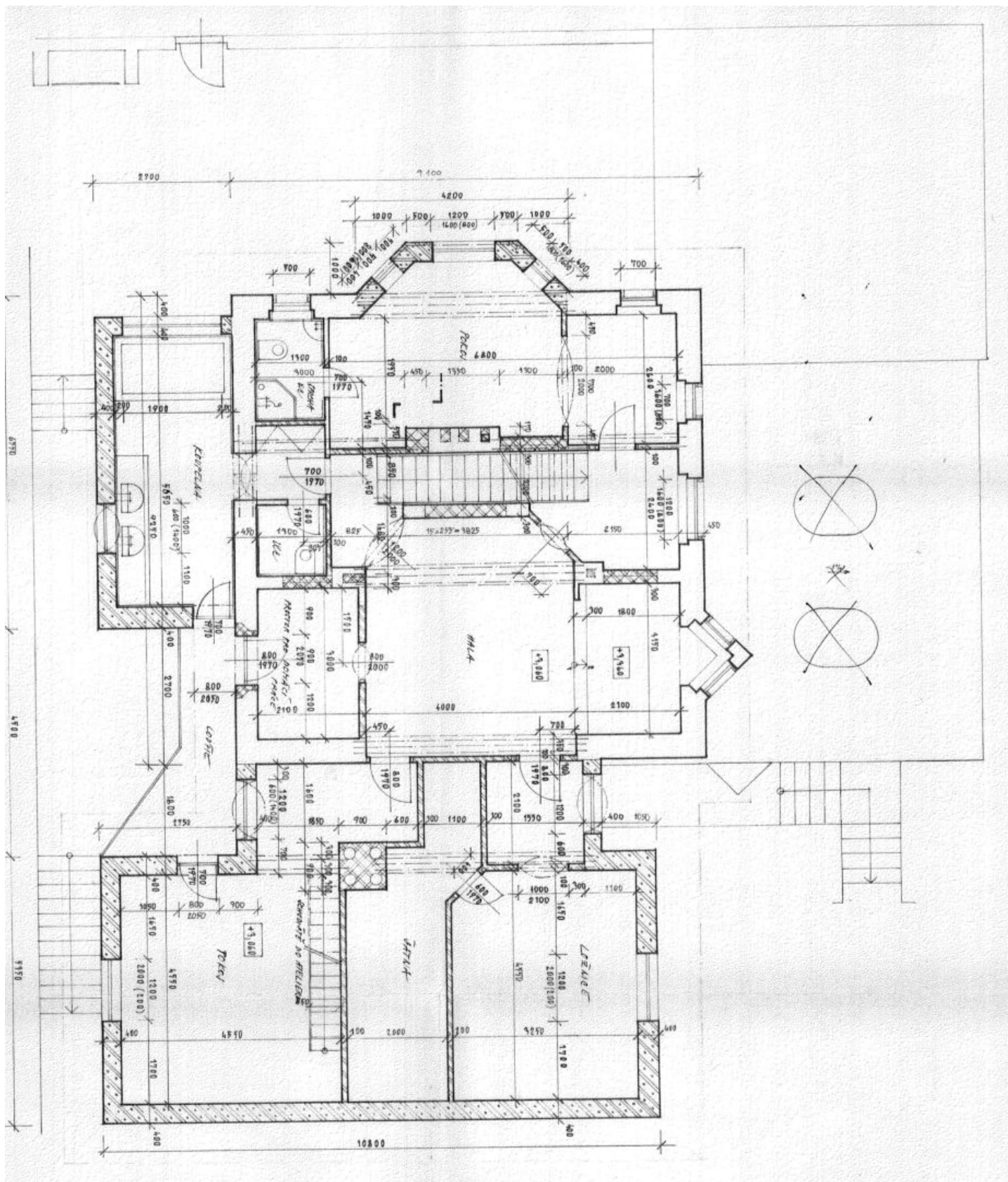




# House Six-bedroom (7+1)

Ask for price

500 m<sup>2</sup>, Prague 4, Hodkovičky, Nad Údolím





# House Six-bedroom (7+1)

Ask for price

500 m<sup>2</sup>, Prague 4, Hodkovičky, Nad Údolím

