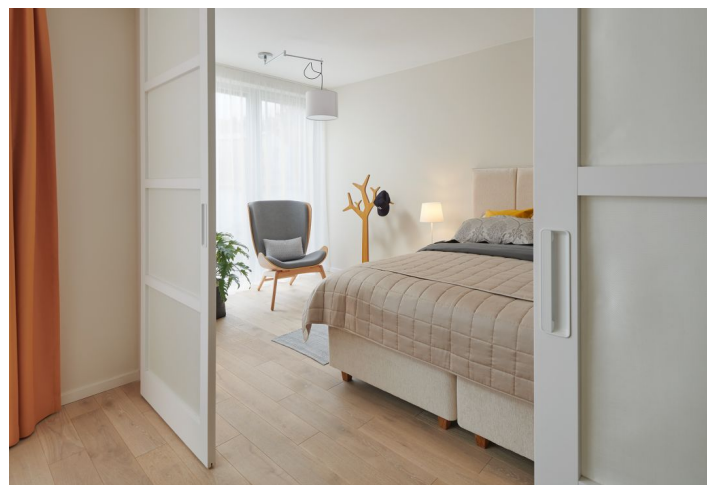
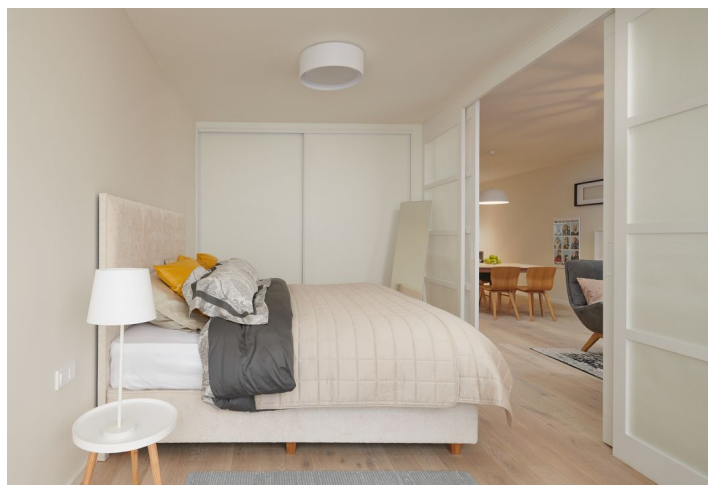


Apartment One-bedroom (2+kk)

Sold

80 m², Prague 4, Hodkovičky, Na Lysinách

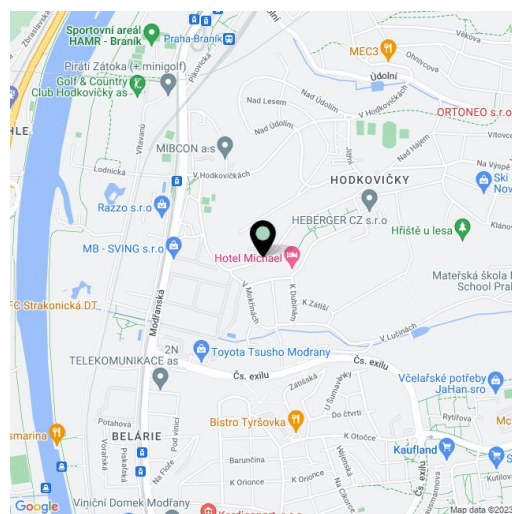


Apartment One-bedroom (2+kk)

Sold

80 m², Prague 4, Hodkovičky, Na Lysinách

Total area	80 m ²
Parking	450 000
Cellar	Yes
PENB	B
Reference number	29595



* Area of the unit according to the Civil Code. The area consists of the sum total area of the entire unit bounded by perimeter walls.

Newly built airy and bright apartment with a minimalist interior design, part of the Vila Hodkovičky boutique project, situated in a quiet residential area with a pleasant atmosphere. Completion scheduled for February 2019.

The layout of the apartment on the 1st floor features a generous southwest-facing living space with an open plan kitchen, the possibility of creating a bedroom, a study, a bathroom, a hall, and a utility room.

The interior will include triple glazed **floor-to-ceiling wooden windows**, bathrooms with large-format tiles, Durstone mosaic tiles, Hüppe, Laufen, and Grohe sanitary ware, **underfloor heating**, Sapeli interior doors, and security entrance doors. **Currently, the client can select fittings and appliance, and customize the layout.** The apartment comes with a cellar unit and there is a practical washroom for bicycles and dogs in the building. The price of the apartment includes a kitchen, built-in wardrobes, lights, and curtains. A parking space is available at an additional cost.

The villa is located in a quiet area of Prague, surrounded by dense greenery. A popular **cycling trail** along the Vltava River is close-by. Other fitness opportunities include a nearby sports center and a **golf club**. A large shopping center is within short driving distance. From the tram stop just a few minutes' walk from the villa it is a **20-minute ride to Wenceslas Square**. A bus stop and the Prague Braník train station with fast and direct connections to the **Main Railway Station** can easily be reached on foot. The Barrandov Bridge and the Prague Ring Road are easily accessible by car.

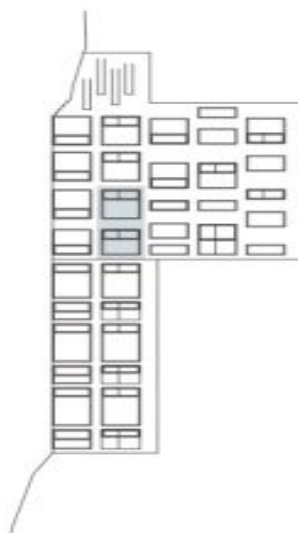
Usable area 80.26 m².

More information about the project: www.vilahodkovicky.cz.

Apartment One-bedroom (2+kk)

Sold

80 m², Prague 4, Hodkovičky, Na Lysinách



č.	Přibližné rozměry místností	m ²
1	obývací pokoj + kk	53,01
2	koupelna	4,50
3	chodba	5,62
4	komora	2,93
5	pracovna	11,98
Plocha bytu dle NOZ		83,42