



## Apartment Three-bedroom (4+kk)

Ask for price

251.2 m², Prague 10, Vinohrady, Hradešinská





## Apartment Three-bedroom (4+kk)

[Ask for price](#)251.2 m<sup>2</sup>, Prague 10, Vinohrady, Hradešinská

Total area	311 m <sup>2</sup>
Floor area*	251 m <sup>2</sup>
Terrace	60 m <sup>2</sup>
Parking	6 000 000
Garage	Yes
Cellar	Yes
PENB	B
Reference number	29422

As famous Czech writer Karel Čapek once said, "Our lives are formed on a thin line between what we want and what we must do." Writers, architects, journalists, and art critics have all influenced 1930s events, including construction, which is exactly why so many beautiful timeless buildings were built... places where you don't just live but where you really experience life.

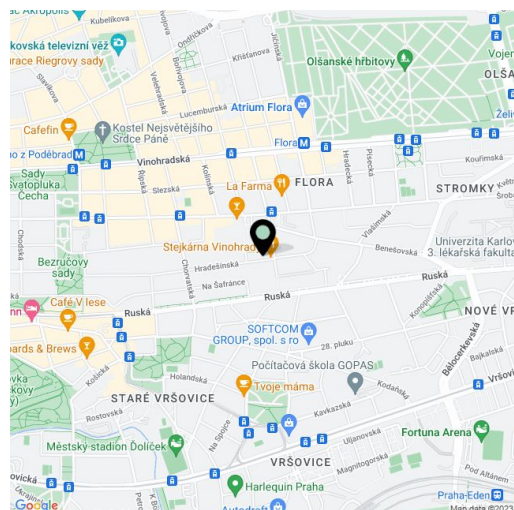
The layout of this spacious ground floor apartment oriented to 3 cardinal points offers a generous living room with an open plan kitchen, a dining room and entrance to a large **south-facing terrace**, a west-facing master bedroom with a walk-in closet and an en-suite bathroom, a spacious foyer and a hallway, a utility room, a bathroom, and separate powder room.

The interior will include **solid oak parquet flooring** (in waxed oil), **large-format triple-glazed wooden windows with acoustic-insulation** and remote-controlled roller blinds, high-quality interior doors, a security entrance door (class 3), a controlled ventilation system with a **regeneration unit**, Laufen, Roca, and Aquatek sanitary ware, and a preparation for an intelligent home system. Currently, it is possible for clients to make changes, including modifying the layout. The apartment comes with **3 garage parking spaces** and a **cellar unit**. The exceptional **energy-saving apartment building with a reception**, elevator, camera system, and security is **completely wheelchair accessible**.

Vinohrady - Art Nouveau and modern villas on one side, a noble villa on the other. A location where many prominent personalities of the 1930s lived, including the Čapek Brothers. Extensive green spaces can be found in the area including the **Havlíčkovy sady (Grébovka)** and **Riegrovy sady** parks and perfect infrastructure including a dense urban transport network. Within walking distance, there are several kindergartens and primary schools, theaters, restaurants, cafes and bistros, a number of small shops and a large shopping center, and the farmers' markets at **Jiřího z Poděbrad Square**. The center is just a few minutes away by metro and tram.

Total area 251.6 m<sup>2</sup>, terrace 59.8 m<sup>2</sup>. Completion planned for Q2 / 2019.

For further information (about other units as well), please contact our office.



\* Area of the unit according to the Civil Code. The area consists of the sum total area of the entire unit bounded by perimeter walls.





Apartment Three-bedroom (4+kk)

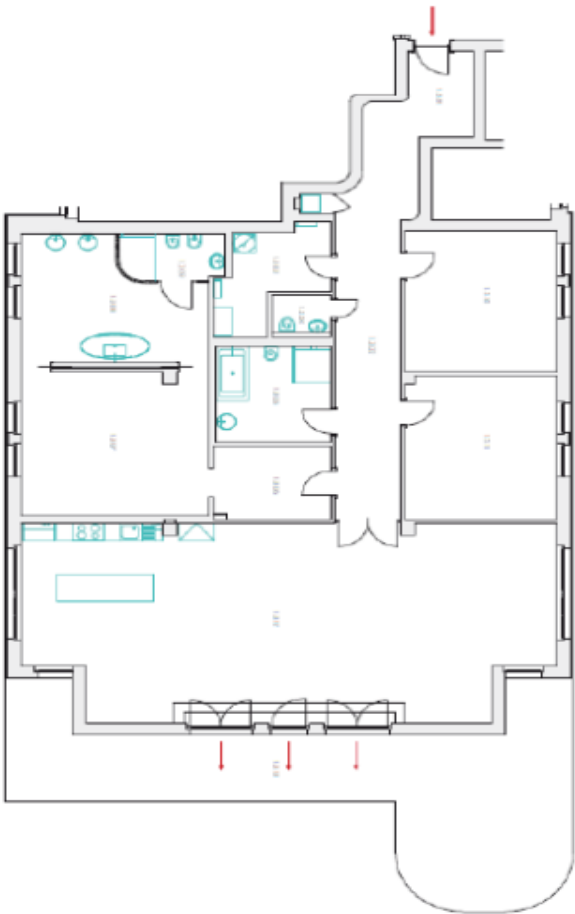
Ask for price

251.2 m², Prague 10, Vinohrady, Hradešinská

KRÁLOVSKÉ VINOHRADY  
ulice Hradešinská

BYT Č. 3

4+KK, plošná výměra bytu 251,6 m²  
4 parkovací místa v podzemní garáži  
sklep, terasa k bytu 59,8 m²



TECHNICKÉ INFORMACE

1.3.01	VSTUPNÍ HALA	6,70
1.3.02	CHODBA	24,90
1.3.03	TECHNICKÁ MÍSTNOST / KOKOSKA	8,25
1.3.04	WC	2,40
1.3.05	KOUPELNA	10,25
1.3.06	ŠATNA	8,00
1.3.07	POKOJ - LOŽNICE	25,40
1.3.08	KOUPELNA	18,80
1.3.09	KOUPELNA - MOŘKA ZONA	4,50
1.3.10	POKOJ	20,00
1.3.11	POKOJ	20,35
1.3.12	POKOJ + KUCHYŇSKÝ KOUT	92,15
1.3.13	TERASA	59,80

podl. plocha [m²]

