

Apartment Three-bedroom (4+kk)

Sold

136 m², Prague 6, Dejvice, Eliášova



Apartment Three-bedroom (4+kk)

Sold

136 m², Prague 6, Dejvice, Eliášova

Total area	138 m ²
Floor area*	136 m ²
Balcony	2 m ²
Parking	-
Cellar	Yes
PENB	G
Reference number	29288

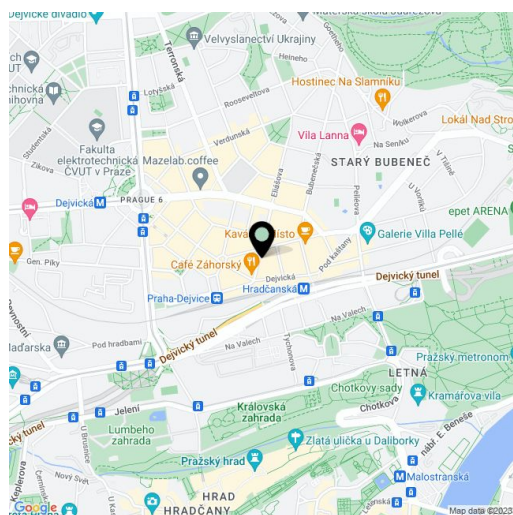
Unique opportunity to buy a 3-bedroom apartment on the 3rd floor of a well-maintained apartment building with an elevator. The building stands on a tree-lined street in the popular location of Prague 6 - Bubeneč with all services incl. Czech and international schools, quick access by metro and tram, and also within easy reach of Letna and Stromovka parks.

The apartment offers a large living room with a kitchen and a master bedroom with a walk-in wardrobe (connection for a washing machine) - both of which face southeast. There are 2 northwest-facing bedrooms with windows overlooking the courtyard (one with a balcony), an entrance hall, a utility room, a bathroom, and a toilet.

Features include **refurbished parquet floors**, new windows, air conditioning units, a modern kitchen with appliances (e.g. Siemens microwave). Parking is available in front of the building (residential zone).

The sought-after diplomatic quarter of Bubeneč offers quick connections to the center and the airport, complete civic amenities and a variety of greenery. The Hradčanská metro/tram stop is a two-minute walk away as are a kindergarten and elementary school; international schools are nearby. Also within easy reach are the Prague Castle complex and two parks. There are many shops around with a wide selection of local products and specialities from all over the world, famous cafes and pubs, and regular farmers markets are held on Vítězné náměstí Square.

Interior 136 m², balcony 2 m².

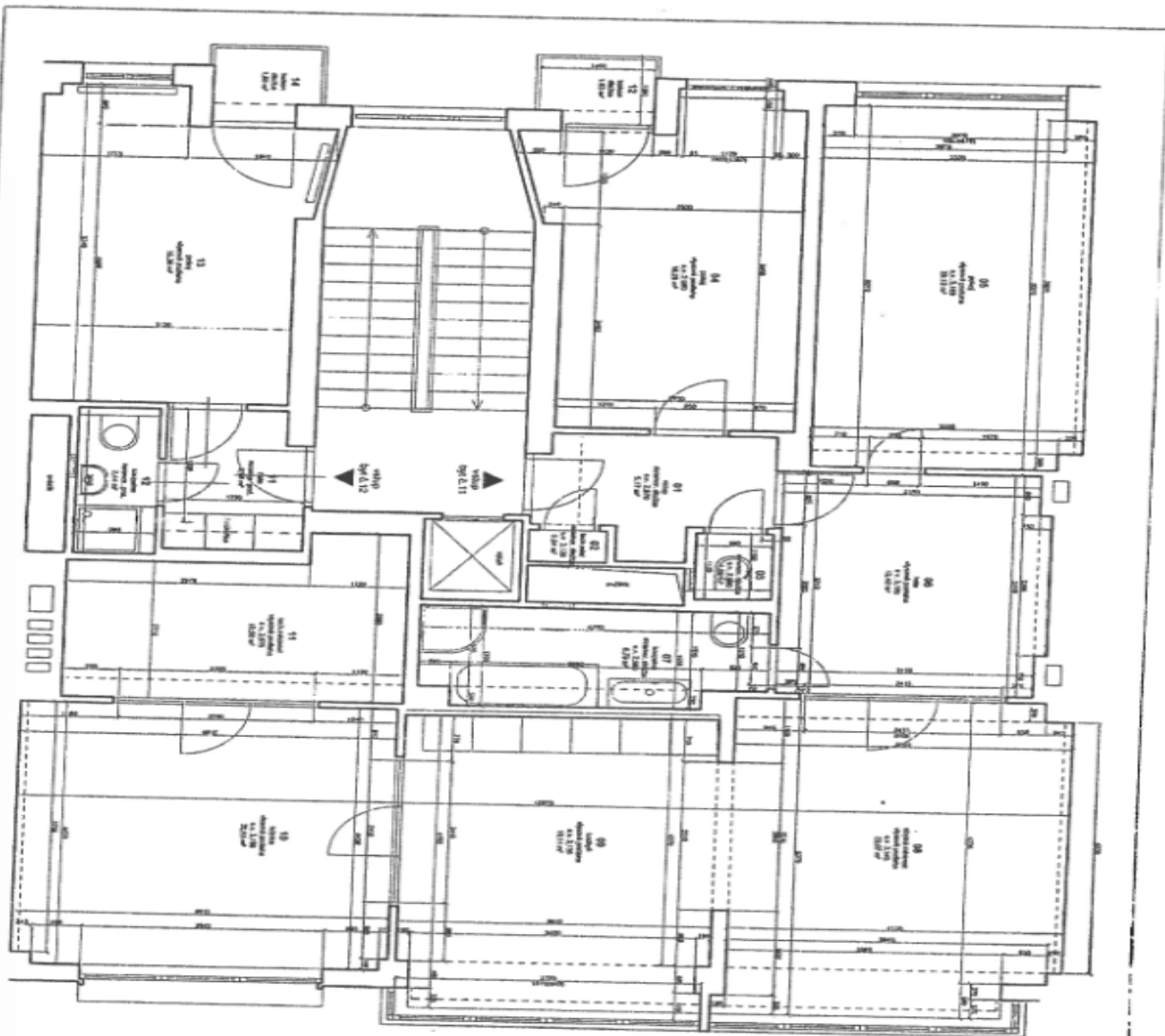


* Area of the unit according to the Civil Code. The area consists of the sum total area of the entire unit bounded by perimeter walls.

Apartment Three-bedroom (4+kk)

Sold

136 m², Prague 6, Dejvice, Eliášova



Tabulka měřičů - 4+kk

Číslo měřiče	Prostředek	Prostředek	Podlaží	Podlaží	Podlaží	Podlaží	Podlaží	Podlaží	Podlaží
11	136,00	136,00	136,00	136,00	136,00	136,00	136,00	136,00	136,00
12	136,00	136,00	136,00	136,00	136,00	136,00	136,00	136,00	136,00
13	136,00	136,00	136,00	136,00	136,00	136,00	136,00	136,00	136,00
14	136,00	136,00	136,00	136,00	136,00	136,00	136,00	136,00	136,00
15	136,00	136,00	136,00	136,00	136,00	136,00	136,00	136,00	136,00

Apartment Three-bedroom (4+kk)

Sold

136 m², Prague 6, Dejvice, Eliášova

TABULKA MÍSTNOSTÍ - byt č. 11

č.m.	název místnosti	m²	podlaha	stěny	poznámky
01	vstup	5,26	mrznor. dlažba		
02	loch. místnost	0,55	mrznor. dlažba	omítka	
03	WC	1,11	mrznor. dlažba	omítka	
04	poko	16,47	vys. podlaha	ker. obklad	
05	poko	20,36	vys. podlaha	omítka	
06	kala	12,54	vys. podlaha	omítka	
07	komodni	8,87	mrznor. podlaha	omítka	
08	obytná místnost	22,33	vys. podlaha	ker. obklad	
09	kuřičn	19,33	vys. podlaha	omítka	
10	ložnice	20,89	vys. podlaha	omítka	
11	loch. místnost	10,62	vys. podlaha	omítka	
11	balkon	1,65	vys. podlaha	omítka	
celkem		137,98 m²			