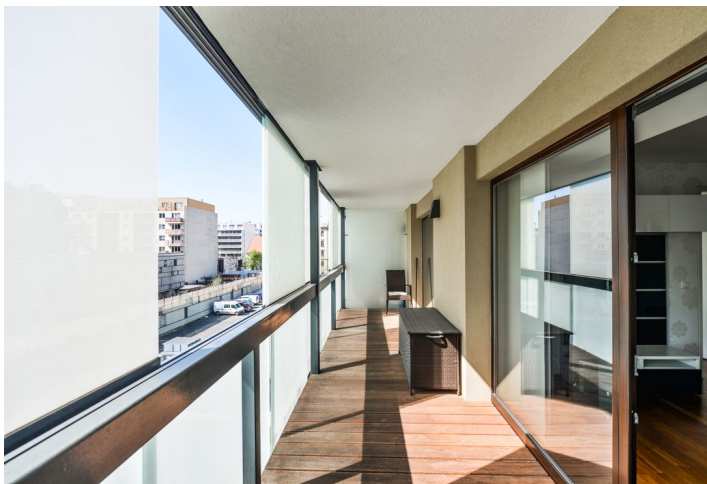


## Apartment One-bedroom (2+kk)

Rented

58 m<sup>2</sup>, Prague 8, Karlín, Šaldova



## Apartment One-bedroom (2+kk)

Rented

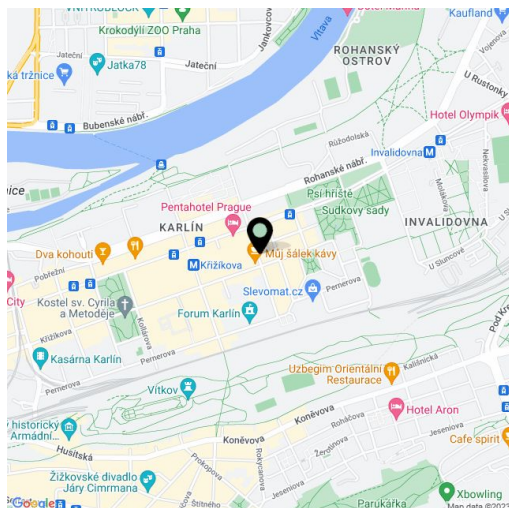
58 m<sup>2</sup>, Prague 8, Karlín, Šaldova

|                  |   |
|------------------|---|
| Total area       | 78 m <sup>2</sup>                         |
| Floor area*      | 58 m <sup>2</sup>                         |
| Loggia           | 20 m <sup>2</sup>                         |
| Parking          | On-site underground garage parking space. |
| Garage           | Yes                                       |
| Cellar           | Yes                                       |
| PENB             | G   |
| Reference number | 29037                                     |
| Available from   | Immediately                               |

Fully furnished 1-bedroom flat with a large enclosed balcony, situated on the third floor of a completely reconstructed industrial building converted into the new modern development - Cornlofts Šaldova. Located in a quiet street in a rapidly developing Prague 8 area with quick connections to the city center, just three minutes from a tram stop and Křižíkova metro station. Building amenities include lift, 24-hour security, security cameras, shared green landscaped courtyard and underground parking.

The interior features a living room with dining area and a fully fitted open kitchen, one bedroom, bathroom with a bathtub with a shower screen and toilet, storage room, and entrance hall. The **enclosed balcony** is accessible from both main rooms. The flat is facing the quiet courtyard garden.

**Solid wood parquet floors**, mosaic tiles in the bathroom, security entry door, French windows, washer, dishwasher, microwave oven, garden furniture, **cellar**. One underground **garage parking** space included. Common building charges and utilities CZK 3500 per month. Available February 1st, 2022.



\* Area of the unit according to the Civil Code. The area consists of the sum total area of the entire unit bounded by perimeter walls.