

## Apartment One-bedroom (2+1)

Sold

120.4 m<sup>2</sup>, Prague 5, Malá Strana, Plaská

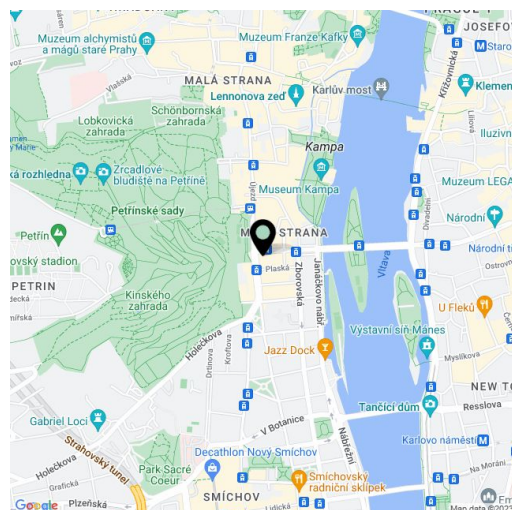


## Apartment One-bedroom (2+1)

Sold

120.4 m<sup>2</sup>, Prague 5, Malá Strana, Plaská

Total area	121 m <sup>2</sup>
Floor area*	120 m <sup>2</sup>
Balcony	1 m <sup>2</sup>
Parking	-
Cellar	Yes
Service price	7 500 CZK monthly
PENB	G
Reference number	28854



\* Area of the unit according to the Civil Code. The area consists of the sum total area of the entire unit bounded by perimeter walls.

This very spacious and elegant apartment with a sunny balcony and bay window overlooking a park and Prague Castle is located on the 2nd floor of a nicely landscaped historic apartment building. The corner building with a new facade and an elevator stands in Malá Strana between Petřín Garden and Janáčkovo Embankment.

The layout of the apartment with south and west-facing windows consists of a generously designed living room with a **balcony**, a separate kitchen with a dining area, a bedroom with a charming **round bay window**, a bathroom (bath, shower, and toilet), a separate toilet, and a vestibule.

The apartment has been reconstructed and has new sanitary facilities, risers, and a gas boiler. The stylish interior is decorated with a **functional wood fireplace**, **marble** in the kitchen and bathroom, high ceilings with **stucco ornaments**, double-leaf original wooden interior doors, and large casement windows. **Pandomo floors** are heated. The apartment is secured by an alarm, and the unit comes with a **large cellar**.

The location of the wider city center is excellent in its accessibility, range of services, and high amount of greenery. There is a tram stop right by the building, and it's a 2-minute drive to the National Theater and a 4-minute drive to the Národní třída or Anděl metro stations. There are many restaurants, bistros, and cafés in the immediate vicinity. **Kampa Island**, **Petřín Garden**, and the nearby beautifully landscaped aristocratic gardens are perfect for romantic walks, and the **Dětský**, **Střelecký**, and **Slovanský Islands** also offer pleasant relaxation.

Interior 121.4 m<sup>2</sup>, balcony 1 m<sup>2</sup>, cellar approx. 6 m<sup>2</sup>.

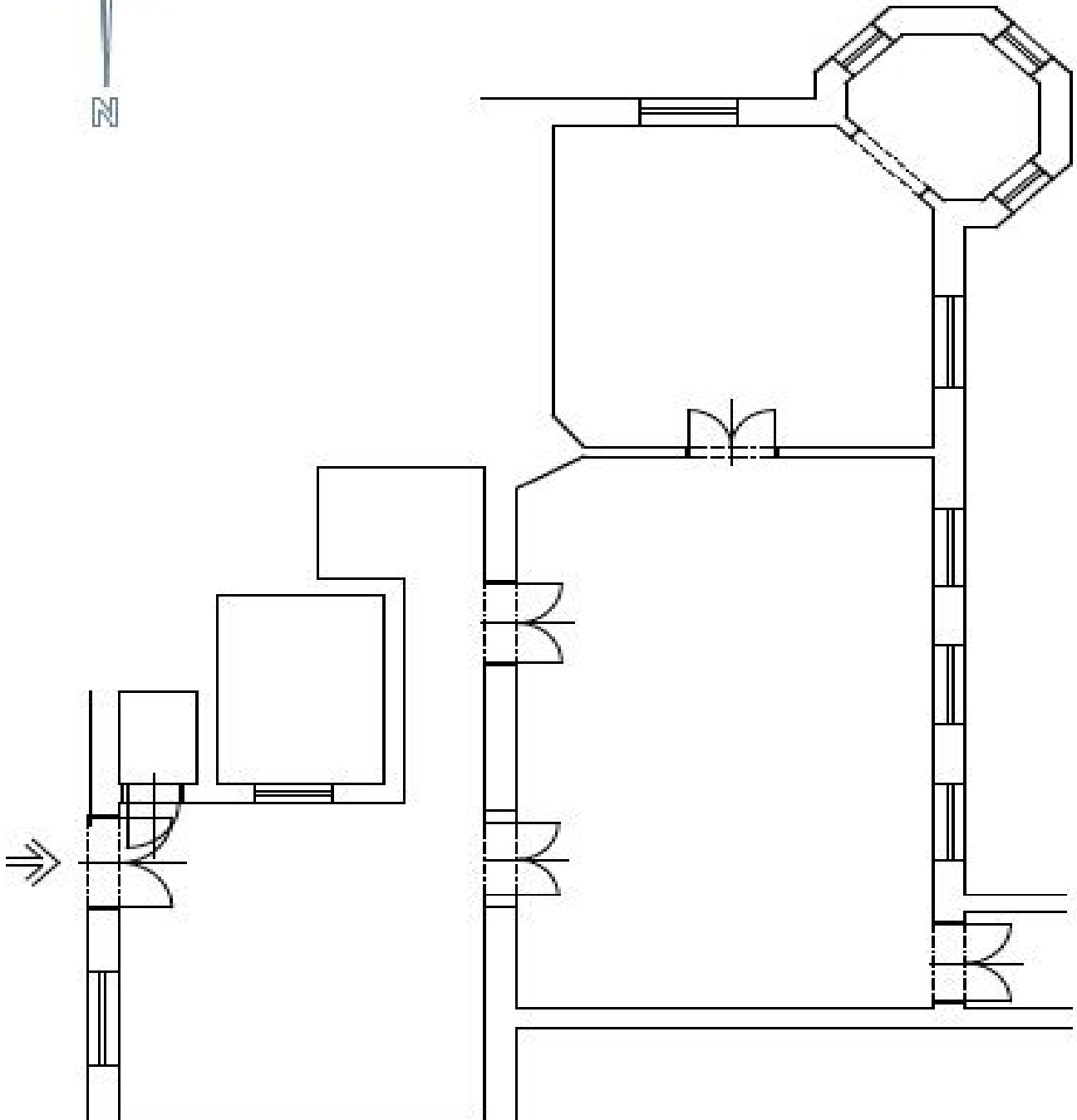
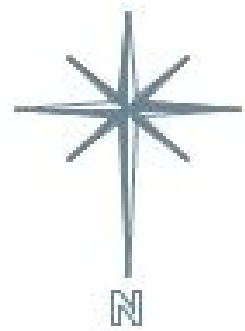
The apartment is rented until 31.8.2022.

In addition to regular property viewings, we also offer real-time video viewings via WhatsApp, FaceTime, Messenger, Skype, and other apps.

## Apartment One-bedroom (2+1)

Sold

120.4 m<sup>2</sup>, Prague 5, Malá Strana, Plaská





# Apartment One-bedroom (2+1)

Sold

120.4 m<sup>2</sup>, Prague 5, Malá Strana, Plaská

