

Apartment Three-bedroom (4+kk)

Rented

166 m², Prague 3, Vinohrady, Laubova



Apartment Three-bedroom (4+kk)

Rented

166 m², Prague 3, Vinohrady, Laubova

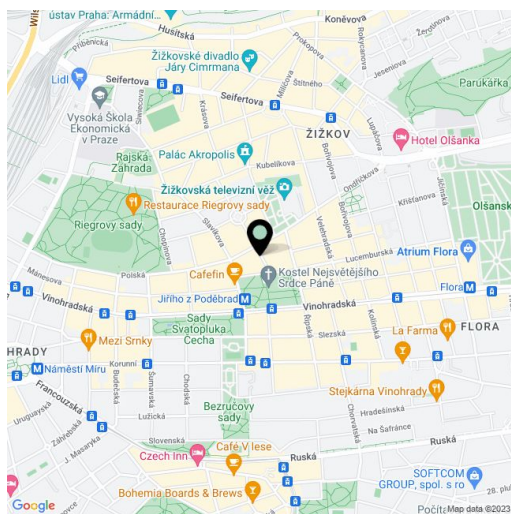
Total area	170 m ²
Floor area*	166 m ²
Balcony	4 m ²
Parking	One parking space located 350m from the building is included in the rent.
Garage	Yes
Cellar	Yes
Service price	Common building charges: EUR 125/person/month. Monthly deposit for water and heating CZK 10,000. Electricity will be transferred to the tenant.
PENB	G
Reference number	28838
Available from	Immediately

Boasting views of the Jiřího z Poděbrad Square and the unique modern Church Of The Most Sacred Heart Of Our Lord, this is an attractive air-conditioned unfurnished 3-bedroom 2-bathroom flat. Situated on the first floor of a completely refurbished Art-Nouveau building with a lift and preserved original features. Conveniently located in the popular Vinohrady residential area at Jiřího z Poděbrad Square with metro station and tram links, with full amenities within easy reach.

The interior of this corner flat includes a spacious living room with a fully fitted open kitchen and a dining area with access to the balcony, a master bedroom with a walk-in closet and a fully equipped en-suite bathroom with a bathtub, a shower and a toilet, two bedrooms (one with a balcony), a bathroom with a shower, a toilet and a bidet, and an entrance hall.

High standard materials and finishes, large windows, solid wood parquet floors, tiles, security entry door, built-in wardrobes, gas boiler, high quality appliances incl. a washer / dryer, plenty of storage space, cellar.

Unfurnished, can be furnished at a higher rent. One parking space located 350m from the building is included in the rent. Available from mid June 2023.

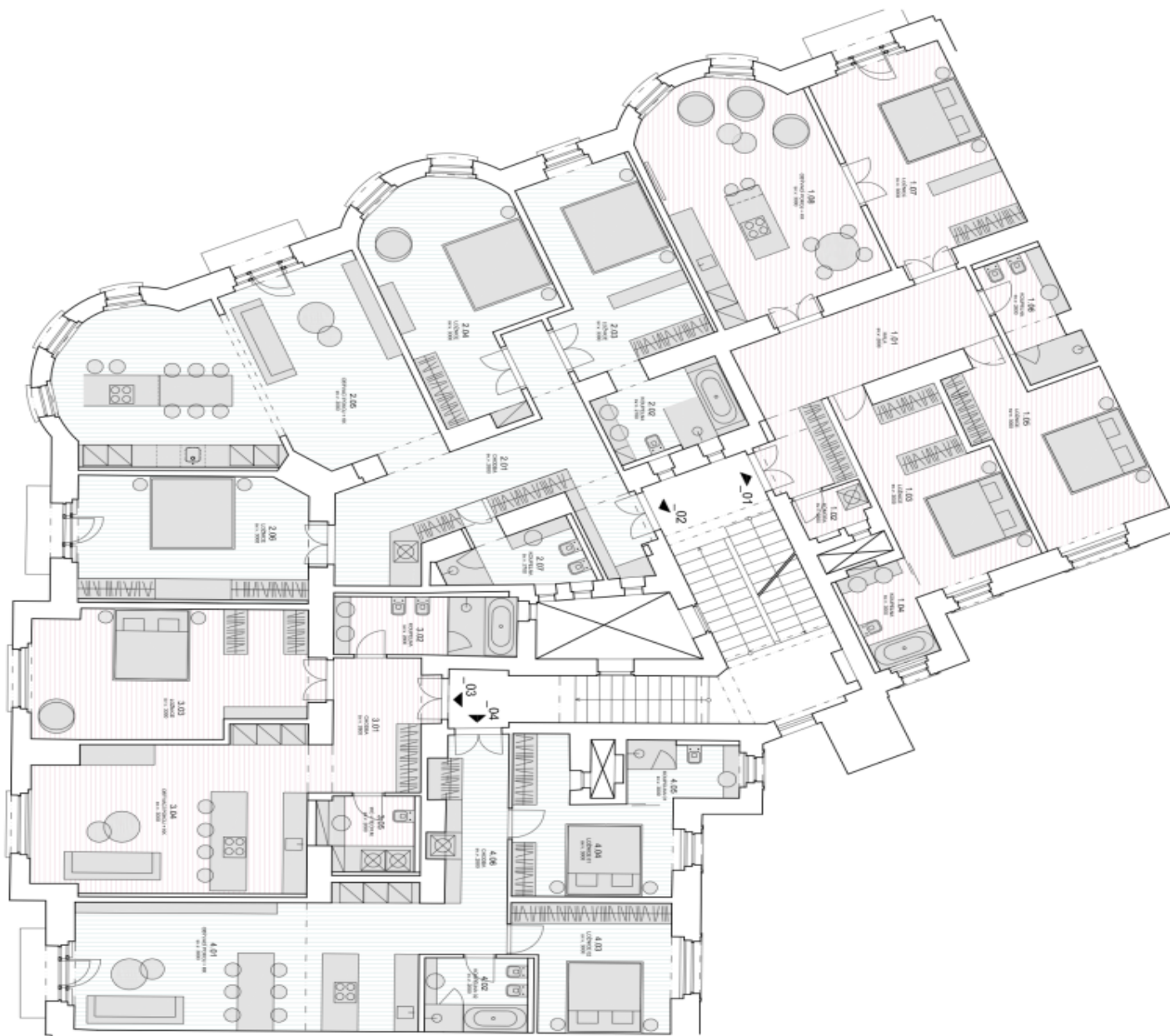


* Area of the unit according to the Civil Code. The area consists of the sum total area of the entire unit bounded by perimeter walls.

Apartment Three-bedroom (4+kk)

Rented

166 m², Prague 3, Vinohrady, Laubova



byl 01_4+kk

ČM	WEŠTVOŤ	PLOCHA m ²
101	KLÁ	21,9
102	KOKHVA	2,4
103	LOŽNICE	10,8
104	KOUPELNA	5,5
105	LOŽNICE	20,7
106	KOUPELNA	7,2
107	LOŽNICE	23,7
108	ODYVAČI PRŮKLA + HK	24,3
CELKEM		134,3

byl 02_4+kk

ČM	WEŠTVOŤ	PLOCHA m ²
201	CHODBA	27,7
202	KOUPELNA	8,9
203	LOŽNICE	21,9
204	LOŽNICE	24,8
205	ODYVAČI PRŮKLA + HK	24,4
206	LOŽNICE	24,9
207	KOUPELNA	7,0
CELKEM		153,3

byl 03_2+kk

ČM	WEŠTVOŤ	PLOCHA m ²
301	CHODBA	10,7
302	KOUPELNA	9,0
303	LOŽNICE	28,9
304	ODYVAČI PRŮKLA + HK	24,4
305	WC + TECH. M.	6,9
CELKEM		89,9

byl 04_3+kk

ČM	WEŠTVOŤ	PLOCHA m ²
401	ODYVAČI PRŮKLA + HK	29,3
402	KOUPELNA	6,4
403	LOŽNICE	15,6
404	LOŽNICE	14,9
405	KOUPELNA	6,4
406	CHODBA	12,3
CELKEM		96,9