

Apartment Three-bedroom (4+kk)

Rented

161 m², Prague 3, Vinohrady, Laubova



Apartment Three-bedroom (4+kk)

Rented

161 m², Prague 3, Vinohrady, Laubova

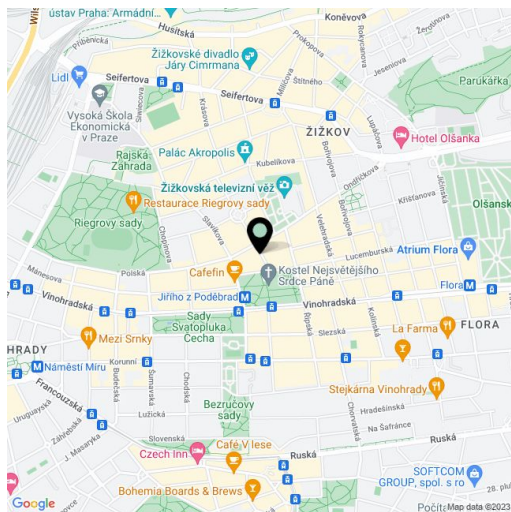
Total area	163 m ²
Floor area*	161 m ²
Balcony	2 m ²
Parking	One parking space located 350m from the building is included in the rent.
Garage	Yes
Cellar	Yes
Service price	Common building charges EUR 125/person/month. Monthly deposit for water and heating CZK 10,000. Electricity will be transferred to the tenant's name.
PENB	G
Reference number	28820
Available from	Immediately

Attractive unfurnished 3-bedroom 2-bathroom flat situated on the fourth floor of a completely refurbished Art-Nouveau building with a lift and preserved original features.

Conveniently located in the popular Vinohrady residential area at Jiřího z Poděbrad Square with metro station and tram links, with full amenities within easy reach.

The interior includes a spacious living room with a fully fitted open kitchen and dining area, master bedroom with a walk-in closet and en-suite bathroom with tub, second bedroom with walk-in closet, bedroom facing courtyard, bathroom with shower, guest toilet and entry hall.

High standard materials and finishes, large windows, solid wood parquet floors, tiles, security entry door, built-in wardrobes, gas boiler, high quality appliances incl. a washer / dryer and a wine fridge, plenty of storage space, cellar. Unfurnished, possible to furnish at a higher rent. One parking space located 350m from the building is included in the rent.

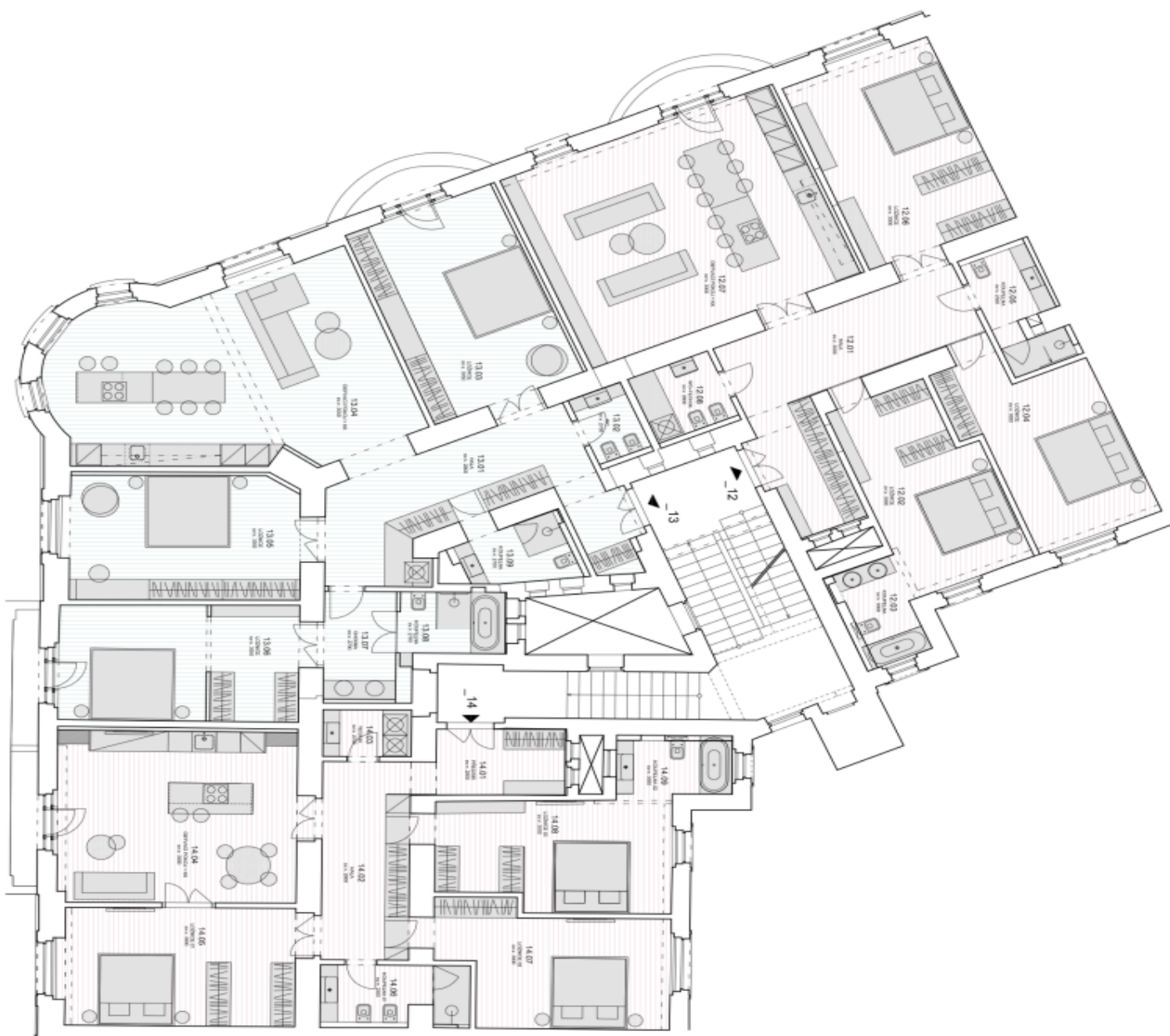


* Area of the unit according to the Civil Code. The area consists of the sum total area of the entire unit bounded by perimeter walls.

Apartment Three-bedroom (4+kk)

Rented

161 m², Prague 3, Vinohrady, Laubova



Byt č. 14 - 4kk

Č.M.	NÁZEV	PLOCHA m ²
14.01	VESTIBUL	7,1
14.02	HALA	14,0
14.03	TECH. M.	3,5
14.04	OBYVACÍ POKOJ + HK	30,0
14.05	LOŽNICE 01	23,8
14.06	KUCHYŇKA	6,8
14.07	LOŽNICE 02	22,2
14.08	LOŽNICE 03	21,3
14.09	KOUPELNA 01	5,8
CELKEM		
		139,3

Byt č. 13 - 4kk

Č.M.	NÁZEV	PLOCHA m ²
13.01	HALA	24,4
13.02	WC	3,2
13.03	LOŽNICE	27,8
13.04	OBYVACÍ POKOJ + HK	80,8
13.05	LOŽNICE	24,2
13.06	KUCHYŇKA	6,4
13.07	KOUPELNA	5,5
13.08	KOUPELNA	6,2
13.09	KOUPELNA	17,8
CELKEM		
		173,8

Byt č. 12 - 4kk

Č.M.	NÁZEV	PLOCHA m ²
12.01	HALA	24,5
12.02	LOŽNICE	20,7
12.03	KOUPELNA	5,3
12.04	LOŽNICE	21,7
12.05	KOUPELNA	6,3
12.06	LOŽNICE	20,9
12.07	OBYVACÍ POKOJ + HK	80,4
12.08	WC + TECHNICKÁ KUCHYŇKA	5,1
CELKEM		
		162,9