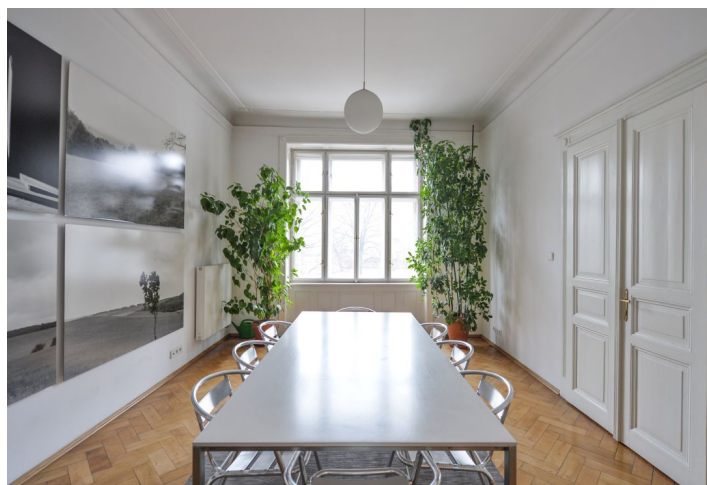
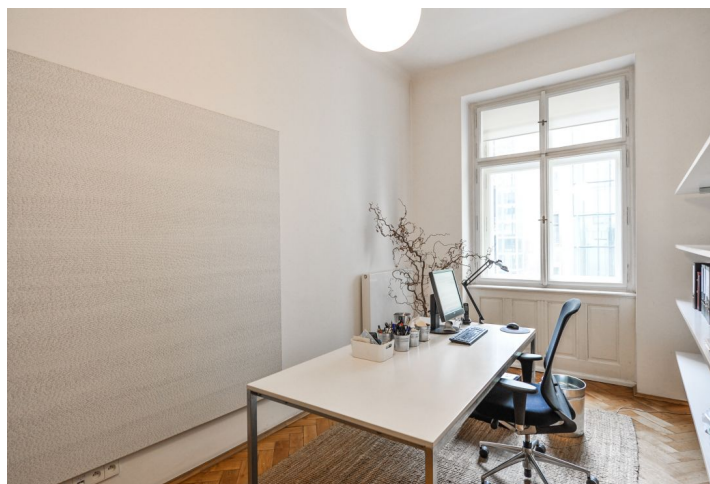


Office space

Rented

Prague 5, Smíchov, Dienzenhoferovy sady



Office space

Rented

Prague 5, Smíchov, Dienzenhoferovy sady

Service price	50 CZK monthly per m ²
Available area	154 m ²
Cellar	-
Parking	-
PENB	G
Reference number	28756

Representative office space for rent on the 2nd floor of a historic building located on the border of New Town and Smichov, close to Jiráskův Bridge, overlooking the park.

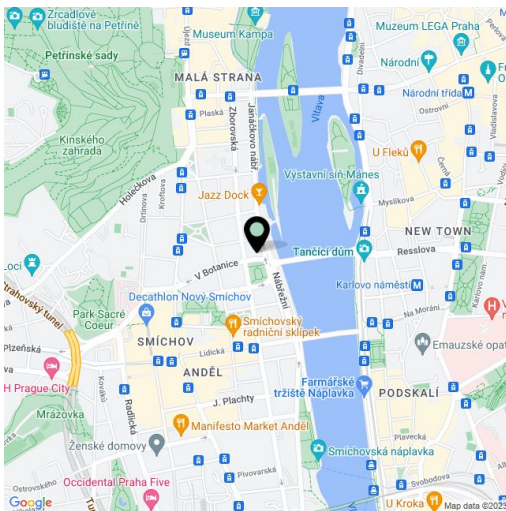
Location:

Excellent accessibility by public transport and by car - within walking distance (about 10 min) from Anděl metro station (line B), and close to the tram stop. All civic amenities in the immediate vicinity of the building.

Facilities and services:

- lift
- garden in the courtyard
- openable windows
- system data and telephone wiring
- free use of the sauna and fitness in the basement
- possibility of a public paid car park directly on the square
- alarm
- toilets
- possible to rent with furniture and server

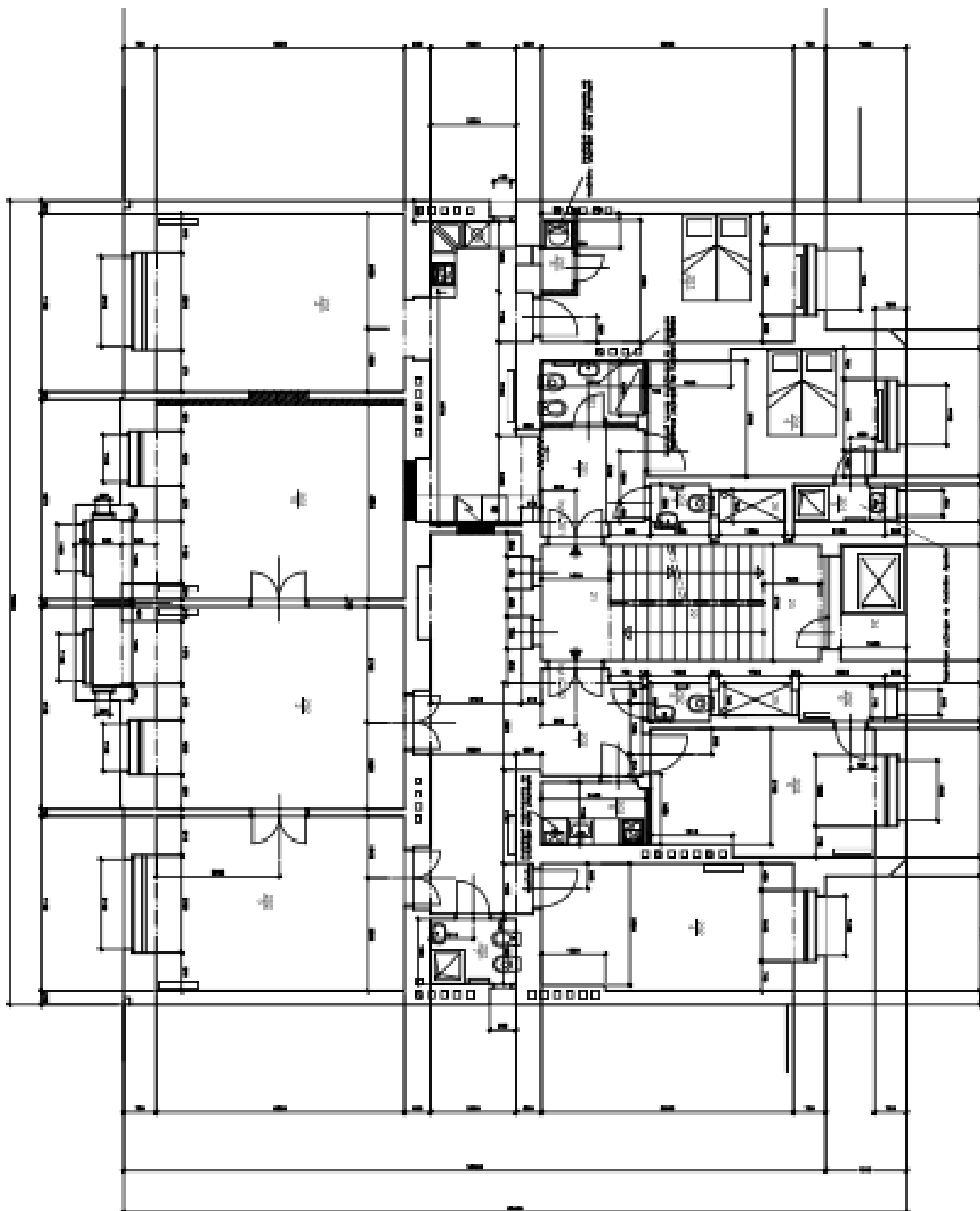
Rental price **CZK 406/m²/month**. Rental and service charges listed without VAT. Lessee pays no commission.



Office space

Rented

Prague 5, Smíchov, Dienzenhoferovy sady



Prague 5, Smíchov, Dienzenhoferovy sady

LEGENDA MÍSTNOSTÍ		
Č.	NÁZEV MÍSTNOSTI	PLOCHA, m ²
1	VSTUPNÍ HALA	273
2	OBSTAVACÍ PROSTOR	304
3	LOŽNICE	244
4	LOŽNICE	179
5	LOŽNICE	155
6	KOUPELNA	3,8
7	KOUPELNA	3,0
8	TOILETA	1,3
9	KAMERNA	1,8
10	KUCHYŇA	293
Celk	SKLEP	92

