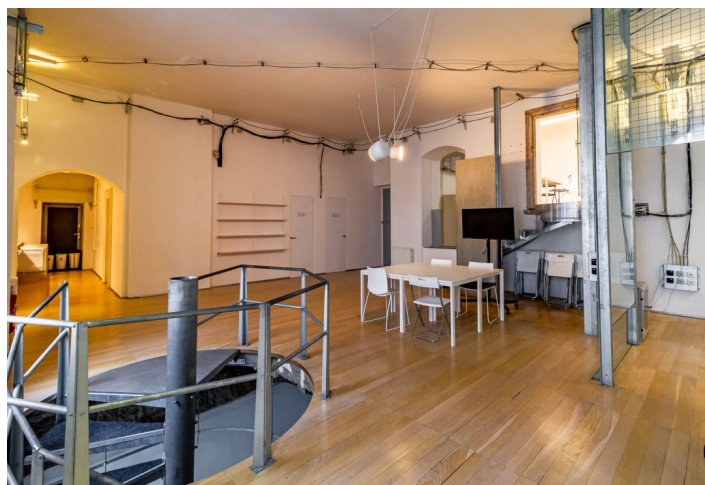


Office space

Rented

Prague 1, Nové Město, Ostrovní



Office space

Rented

Prague 1, Nové Město, Ostrovní

Service price	96 CZK monthly per m ²
Available area	237 m ²
Cellar	-
Parking	Yes
PENB	G
Reference number	28676

Bright office space for lease on the 2nd floor in a renovated historic building, which was built between 1896 and 1906 and is located in the very center of Prague. The building is one of the most valuable neo-baroque buildings in Prague. The spaces have openable windows, wooden floors, kitchenette and toilets.

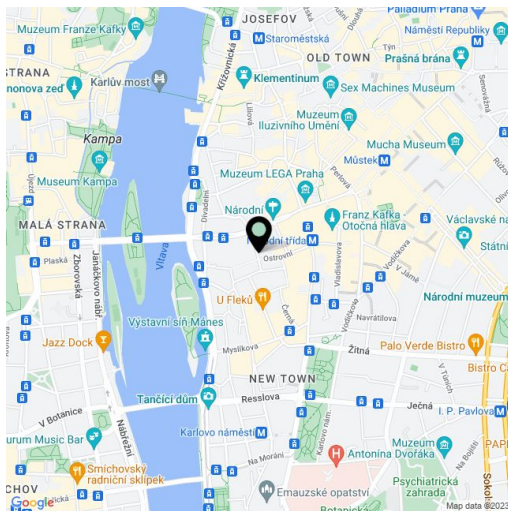
Location:

Great accessibility by public transport. Metro station Národní třída (line B) is by walking one minute away, also tram stops Národní třída or Lazarská. All civic amenities in the area.

Features and Services:

Wooden floors
Alarm
Kitchenettes, toilets
Openable windows

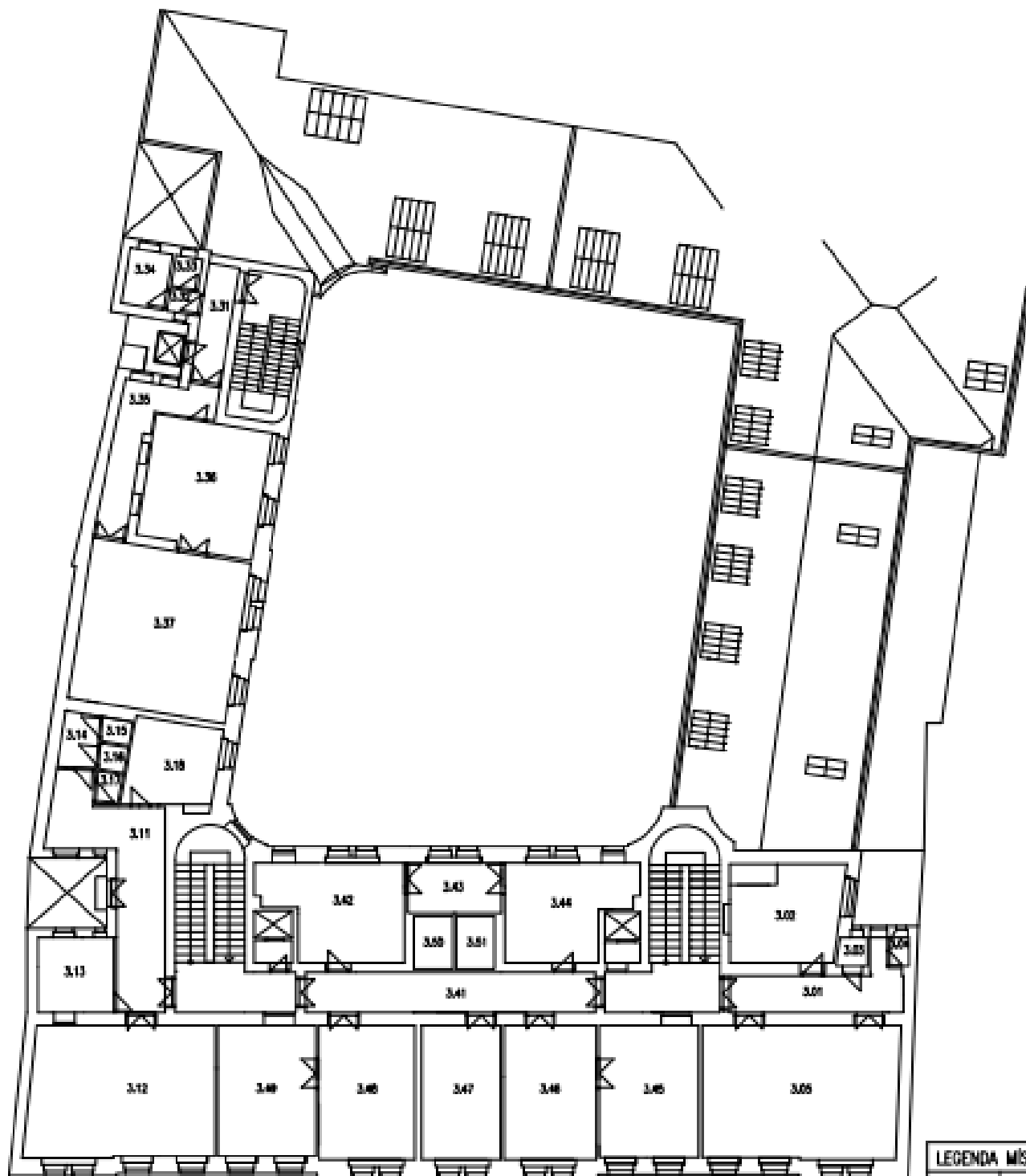
Prices are listed without VAT. Lessee pays no commission.



Office space

Prague 1, Nové Město, Ostrovní

Rented



LEGENDA MÍSTNOSTI 3NP	
OZNAČENÍ	ŮČEL MÍSTNOSTI
	BLOK - C