

Office building

Rented

Prague 1, Nové Město, Ostrovní



Office building

Rented

Prague 1, Nové Město, Ostrovní

Service price	96 CZK monthly per m ²
Tenant consumption	—
Parking	4 000 CZK
Parking service charges	—
Parking ratio	—
Certification	—
PENB	G
Reference number	28671

Renovated historic building offers bright office space for lease. The building was built between 1896 and 1906, is located in the very center of Prague and is also one of the most valuable neo-baroque buildings in Prague. The spaces have openable windows, wooden floors, kitchenette and toilets.

Location:

Great accessibility by public transport. Metro station Národní třída (line B) is by walking one minute away, also tram stops Národní třída or Lazarská. All civic amenities in the area.

Features and Services:

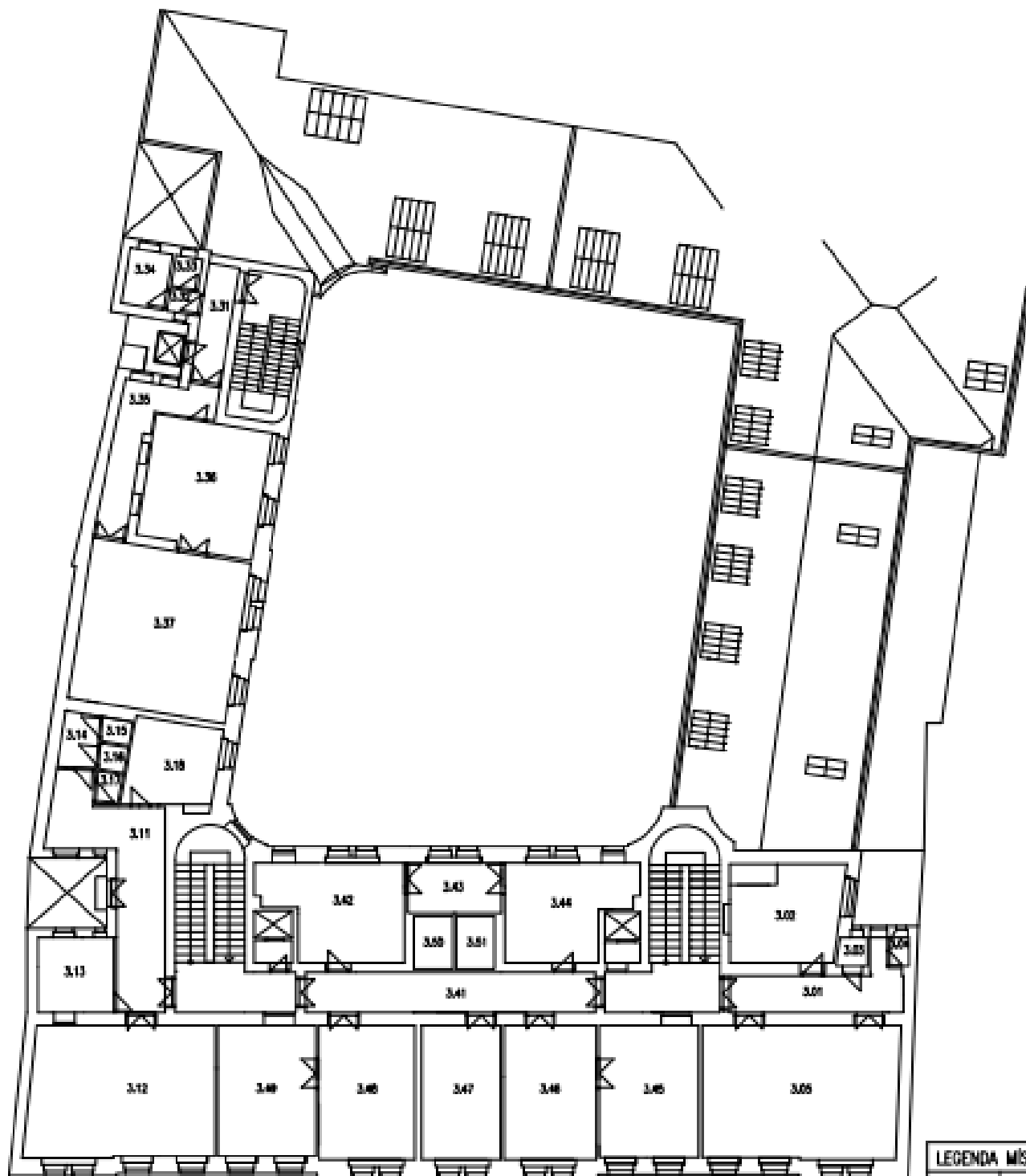
Wooden floors
Alarm
Kitchenettes, toilets
Openable windows

Prices are listed without VAT. Lessee pays no commission.

Office building

Prague 1, Nové Město, Ostrovní

Rented



LEGENDA MÍSTNOSTI 3.NP	
OZNAČENÍ	ŮČEL MÍSTNOSTI
	BLOK - C