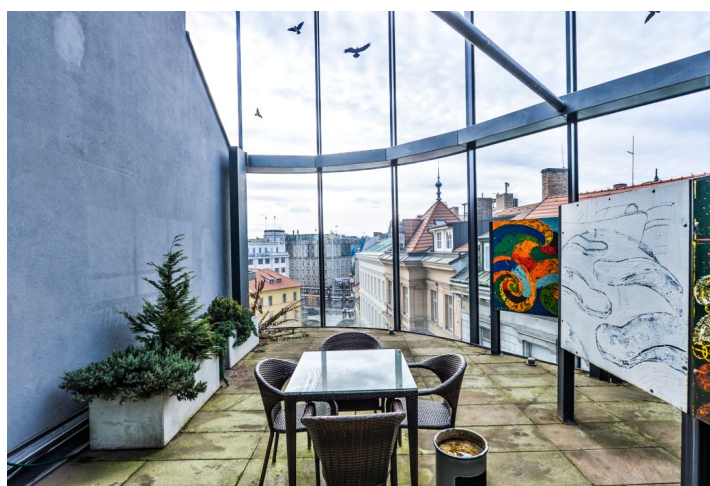
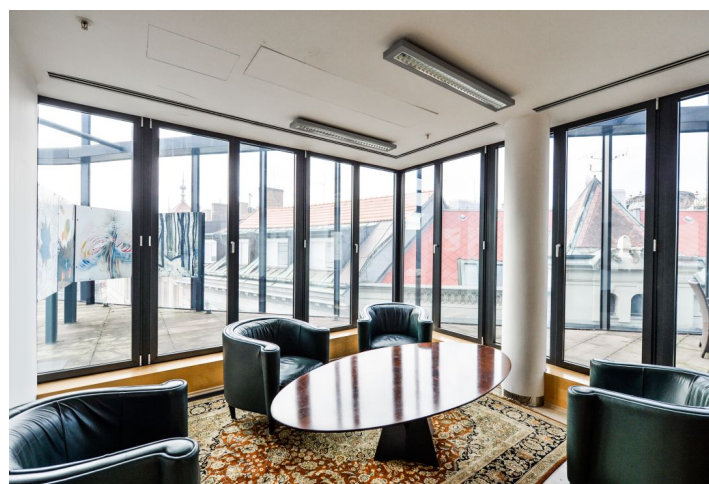
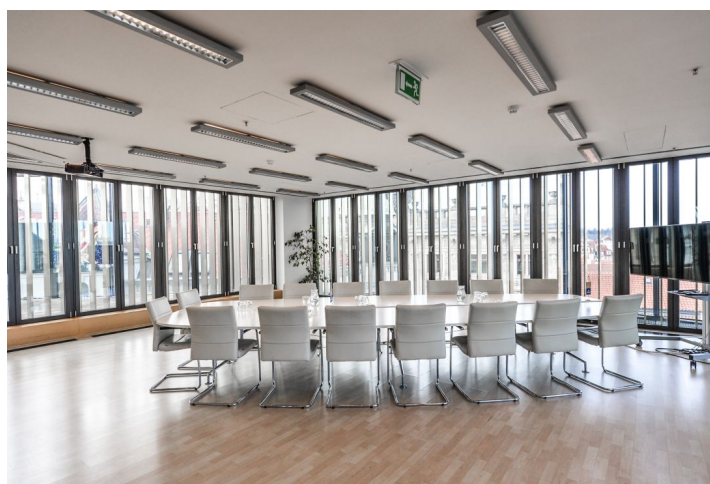


Office space

Rented

Prague 1, Nové Město, Václavské nám.



Prague 1, Nové Město, Václavské nám.

Service price	153 CZK monthly per m ²
Available area	428 m ²
Cellar	-
Terrace	120 m ²
Parking	-
PENB	E
Reference number	28667

Office space with a terrace on the 6th floor of a complex consisting of Functionalist and modern buildings completed in 2002.

The buildings are located in a bustling part of town - also known as the Golden Cross, where Na Příkopě Street meets 28. října Street. This is an excellent and prestigious business address in Prague.

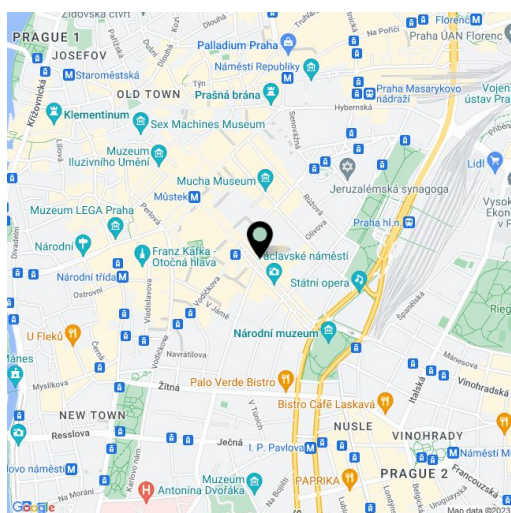
Location:

Due to the complex's central location, it is easily accessible by public transport, by car, as well as on foot. The Můstek metro station (lines A, B) is directly below the building.

Features and services:

- elegant central reception
- security camera system
- cooling system
- openable windows
- carpets
- built-in lighting
- computer networks
- the space is rented without furniture

Rental and service charges listed without VAT. Lessee pays no commission.



Office space

Rented

Prague 1, Nové Město, Václavské nám.

