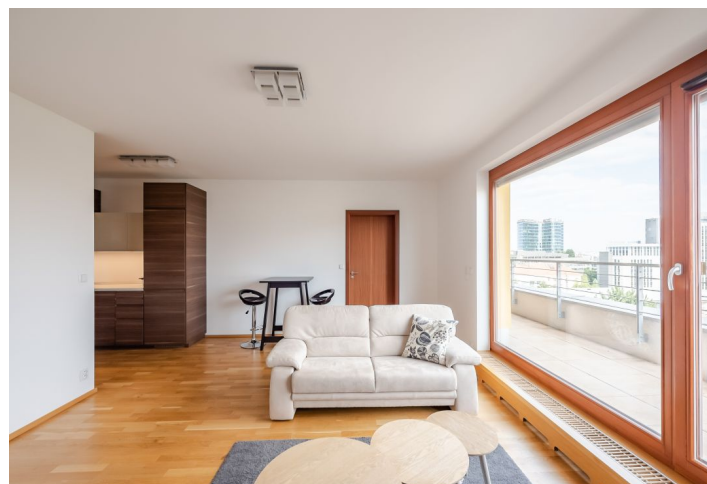


Apartment One-bedroom (2+kk)

Rented

58 m², Prague 4, Michle, Vokáčova



Apartment One-bedroom (2+kk)

Rented

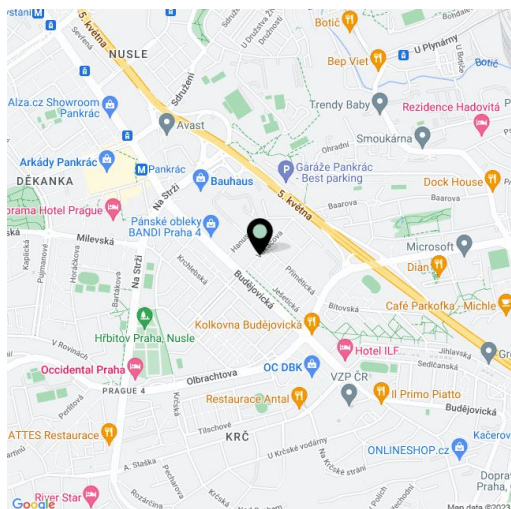
58 m², Prague 4, Michle, Vokáčova

Total area	72 m ²
Floor area*	58 m ²
Terrace	14 m ²
Parking	Garage parking CZK 3,000/mo.
Garage	Yes
Cellar	Yes
PENB	G
Reference number	28604
Available from	Immediately

Benefiting from a 14 m² south oriented terrace offering far reaching views, this furnished 1-bedroom flat is on the sixth floor of a recently built residential building with lift and underground parking. Conveniently situated within walking distance of Pankrác and Budějovická metro stations (five min.). Location with full amenities within immediate reach and excellent access to the D1 highway, in close vicinity of Prague 4 business projects at Pankrác.

The interior features living room with dining area and a fully fitted open kitchen, one bedroom, an en-suite bathroom with bath and sink, a separate toilet with sink, and entrance hall. The **terrace** is accessible from both main rooms.

Wooden floors, tiles, large format windows, built-in wardrobes, security entry door, central heating, dishwasher, washer, dryer, alarm, **cellar**. One on-site **garage parking** space at CZK 3,000 per month. Common building charges and energies CZK 4,000 per month.



* Area of the unit according to the Civil Code. The area consists of the sum total area of the entire unit bounded by perimeter walls.