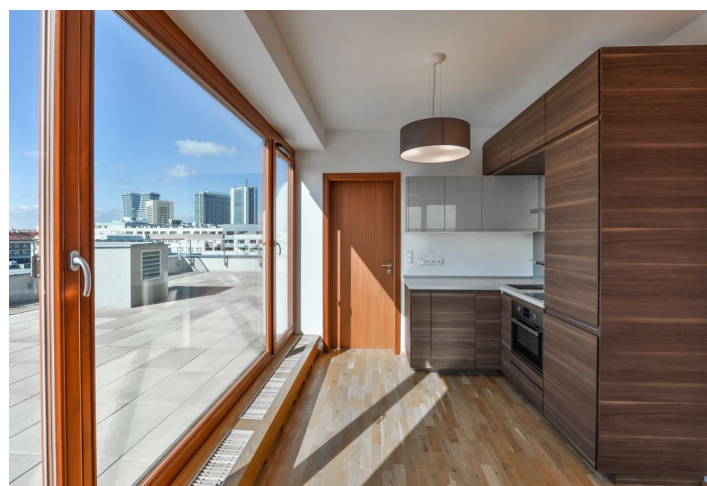


Apartment One-bedroom (2+kk)

Rented

59 m², Prague 4, Michle, Vokáčova



Apartment One-bedroom (2+kk)

Rented

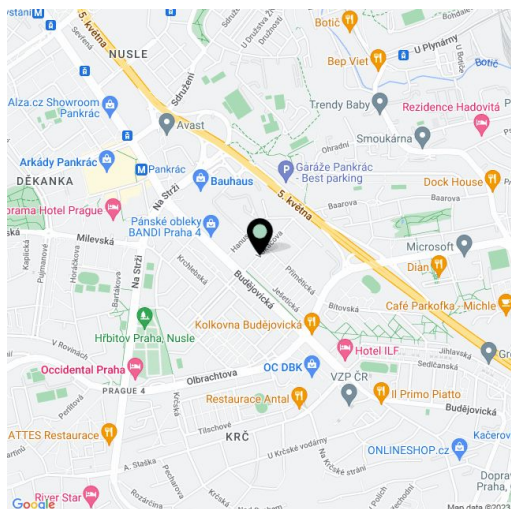
59 m², Prague 4, Michle, Vokáčova

Total area	153 m ²
Floor area*	59 m ²
Terrace	94 m ²
Parking	Garage parking included.
Garage	Yes
Cellar	Yes
PENB	G
Reference number	28603
Available from	Immediately

Boasting a 94 m² south and west oriented terrace offering far reaching views, this new furnished 1-bedroom flat is on the sixth floor of a brand new building with lift and underground parking. Conveniently situated within walking distance of Pankrác and Budějovická metro stations (five min.). Location with full amenities within immediate reach and excellent access to the D1 highway, in close vicinity of Prague 4 business projects at Pankrác.

The interior features living room with dining area and a fully fitted open kitchen, one bedroom, a windowed en-suite bathroom with a walk-in shower, a separate toilet, and entrance hall. The **terrace** is accessible from both main rooms.

Wooden floors, tiles, large format windows, built-in wardrobes, security entry door, central heating, dishwasher, alarm, **cellar**. Garage parking space included in the rent. Common building charges, water and heating, incl. Internet, and deposit for electricity CZK 13,130 per month.



* Area of the unit according to the Civil Code. The area consists of the sum total area of the entire unit bounded by perimeter walls.