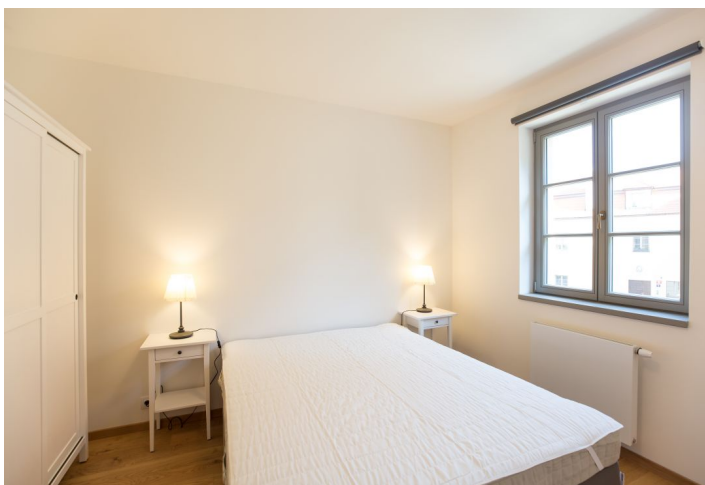


## Apartment One-bedroom (2+kk)

Rented

63 m<sup>2</sup>, Prague 6, Dejvice, U Matěje



# Apartment One-bedroom (2+kk)

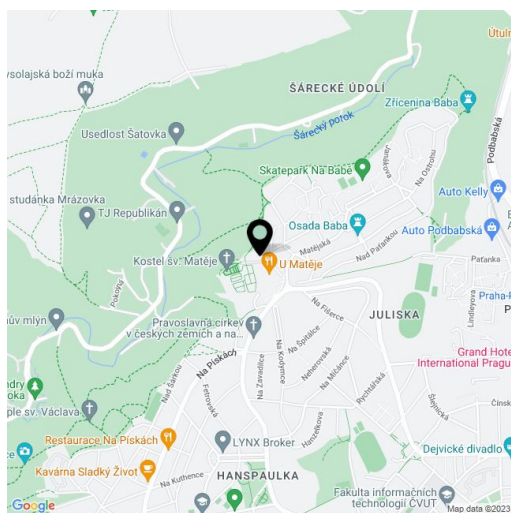
**Rented**63 m<sup>2</sup>, Prague 6, Dejvice, U Matěje

Total area	63 m <sup>2</sup>
Parking	Garage parking.
Garage	Yes
Cellar	Yes
PENB	C
Reference number	28540
Available from	Immediately

Benefiting from a prestigious location, this is a brand new, furnished 1-bedroom flat on the first floor of the new secure gated Hendlův dvůr Residence. The former homestead from the mid 16th century that has undergone a new meticulous renovation is situated in a quiet green residential area on the edge of the highly sought after Hanspaulka neighborhood bordering the Šárka Valley. Location with quick access to the city center and amenities, bus connections to Bořislavka and Hradčanská metro, convenient to the airport and international schools, and moments from Juliska sports stadium.

The flat features living room with dining space and a fully fitted open kitchen, one bedroom, shower bathroom with toilet and bidet shower, and entrance hall.

Heat recovery ventilation, wooden floors, tiles, security entry door, roller blinds, dishwasher, microwave oven, video entry phone, **basement storage unit**, camera system. One **garage parking** space at CZK 2,000 per month. Common building charges, water and heating CZK 4000 per month. Electricity is billed separately.



\* Area of the unit according to the Civil Code. The area consists of the sum total area of the entire unit bounded by perimeter walls.