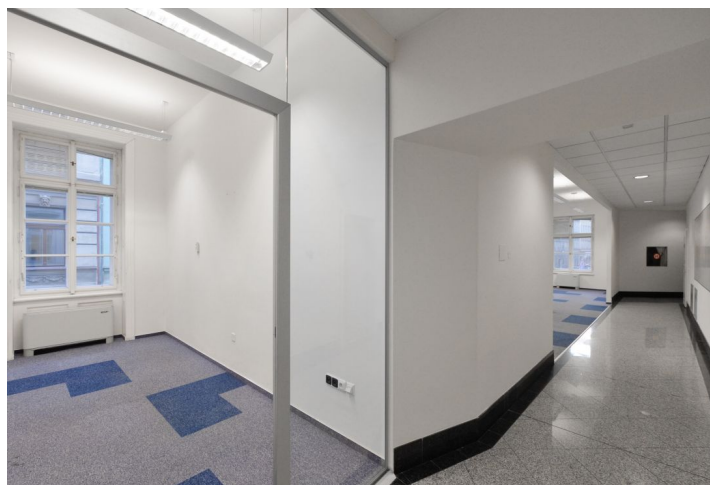


Office space

Rented

Prague 1, Nové Město, Soukenická



## Office space

Rented

Prague 1, Nové Město, Soukenická

Service price	125 CZK monthly per m <sup>2</sup>
Available area	257 m <sup>2</sup>
Cellar	-
Parking	EUR 140 / ps / month
PENB	B
Reference number	28489

Office space for lease on the 1st floor of a complex consisting of modern and historic buildings in the center of Prague. Located in Prague's prime business and financial district, close to Náměstí Republiky Square, with great public transportation – close to the Náměstí republiky metro station (line B) and tram stops. Easy connection to the Prague ring and the D1 highway.

**Location:**

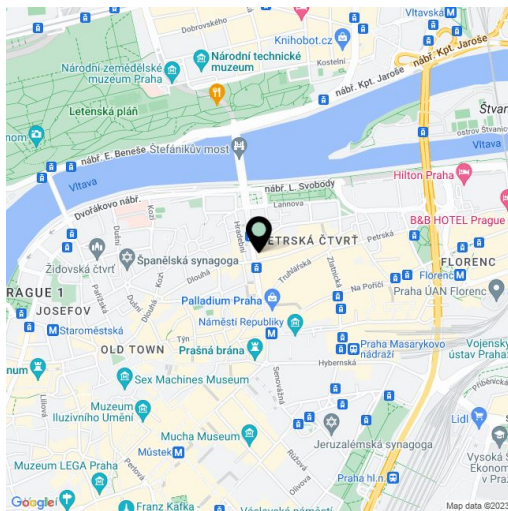
The building is located in the center of Prague, with all amenities within walking distance. Metro station Náměstí Republiky (line B) and shopping centres Palladium and Kotva about 3 minutes walk. Close to Masaryk and Main railway station.

**Features and Services:**

- Openable windows
- 4 pipe fan coil
- External sun-blinds
- CCTV security service
- 24/7 reception
- Security service
- Card access system
- BREEAM in use certification (in process)
- Common green terraces
- Internal underground parking
- Sockets for electric cars (in process)

**Available from January, 2023.**

Rental and service charges listed without VAT. Lessee pays no commission.



## Office space

Rented

Prague 1, Nové Město, Soukenická

257 m<sup>2</sup> / 257 sq m

