

Apartment Three-bedroom (4+kk)

Ask for price

149 m², Prague 6, Vokovice, Ke Dvoru



Apartment Three-bedroom (4+kk)

Ask for price

149 m², Prague 6, Vokovice, Ke Dvoru

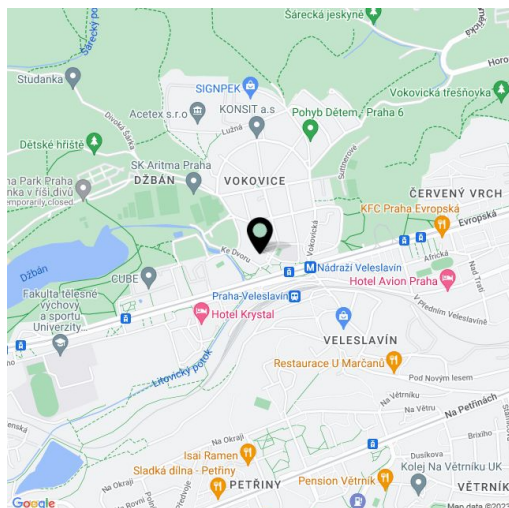
Total area	164 m ²
Floor area*	149 m ²
Terrace	15 m ²
Parking	1 000 000 CZK
Garage	Yes
Cellar	Yes
PENB	B
Reference number	28384

Attractive apartment boasting two enclosed balconies with green views, in the newly emerging Šárecký dvůr residential project, consisting of 51 apartments. The project uniquely combines modern architecture & design with elegant & historic preserved Baroque structures. The private complex will offer 24-hour reception, secure underground parking, CCTV and a beautifully landscaped private park.

The dominant of the apartment on the 3th floor is a generous living room with a kitchen, dining room and entrance to an **west-facing enclosed balcony**. The master bedroom with en-suite bathroom is adjacent to a **east-facing enclosed balcony**. There are also a 2 bedrooms with ensuite bathrooms, a spacious entrance hall, a separate toilet and 2 walk in wardrobes. The apartment is offered in a state of **white walls**, which allows completion according to the owner's needs and wishes. **The purchase price includes garage for 2 cars, parking space and a cellar.**

Location in a pleasant, lovely area of Prague 6, offering all public amenities, greenery and quick access to the center and airport. The complex is located close to the Džbán water reservoir and the Divoká Šárka Nature Reserve: active lifestyle lovers can take full advantage of the environment perfectly suitable for cycling, hiking, in-line skating, jogging or even swimming and golfing, plus skating in winter. All services will be at your fingertips - the Veleslavin metro station with swift connections to the city center is only a few minutes' walk away, and the Václav Havel Airport in Ruzyně can be reached in just ten minutes by car or bus.

Floor area 148.6 m², enclosed balconies 7.7 + 7.7 m².



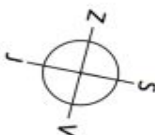
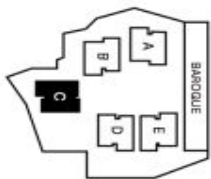
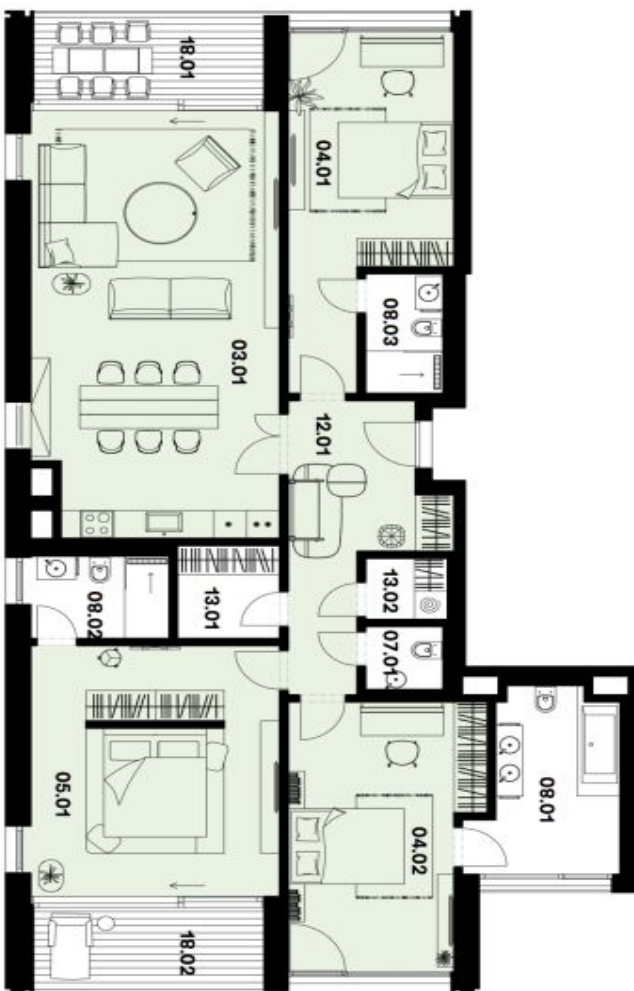
* Area of the unit according to the Civil Code. The area consists of the sum total area of the entire unit bounded by perimeter walls.

Apartment Three-bedroom (4+kk)

149 m², Prague 6, Vokovice, Ke Dvoru

Ask for price

Šárecký
dvůr



CRESTYL

Schéma půdorysu bytu představuje předpokládané dispozici včetně kuchyňské linky a nabytek nejistou součástí bytu, veškeré zařízení je zahrnuto pouze pro názornost. Zřetelný nabytek neodtahuje rozmístění elektroinstalace v jednotlivých místnostech.

www.sareckydvur.cz
Issue: 03-18-0317
Architekt: Bogie Architects,
Crimealr architekti

Na Perštýně 2,
110 00, Praha 1
Tel.: + (420) 257 328 281
www.svoboda-williams.com

C-4.1 4.NP
4kk

Č.	Místnost	m ²
03.01	Obytný pokoj + kuchyňský kout	40.0
04.01	Pokoj	23.5
04.02	Pokoj	18.8
05.01	Ložnice	27.2
07.01	Toaleta	2.0
08.01	Koupelna + toaleta	8.9
08.02	Koupelna + toaleta	4.3
08.03	Koupelna + toaleta	3.6
12.01	Chodba	12.9
13.01	Šatna	3.7
13.02	Šatna	2.1

Podlahová plocha dle NOZ		148,6
18.01	Lodžie	7,7
18.02	Lodžie	7,7



svoboda&williams | CHRISTIE'S
INTERNATIONAL REAL ESTATE