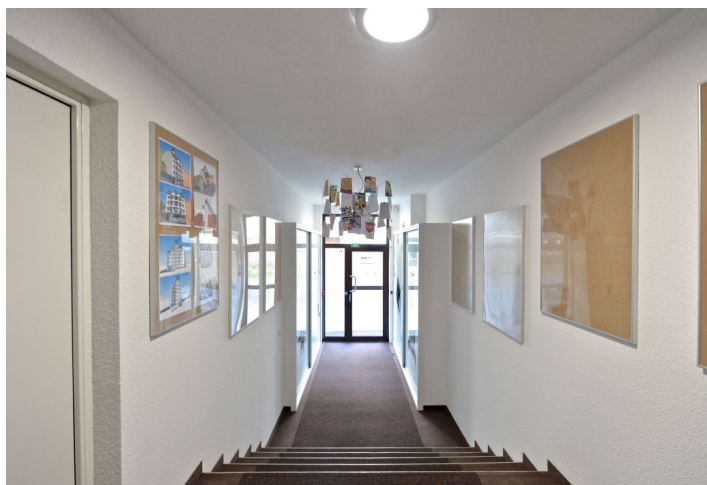
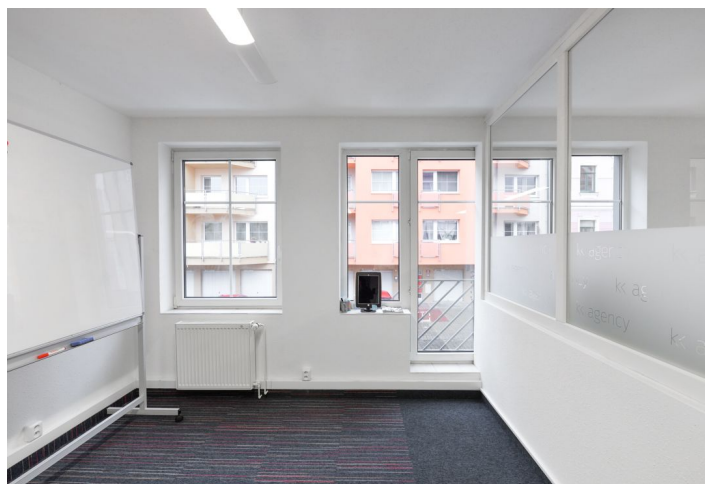
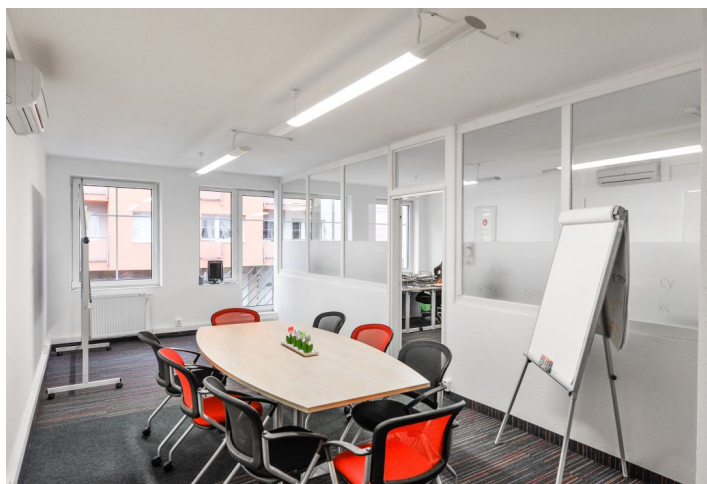
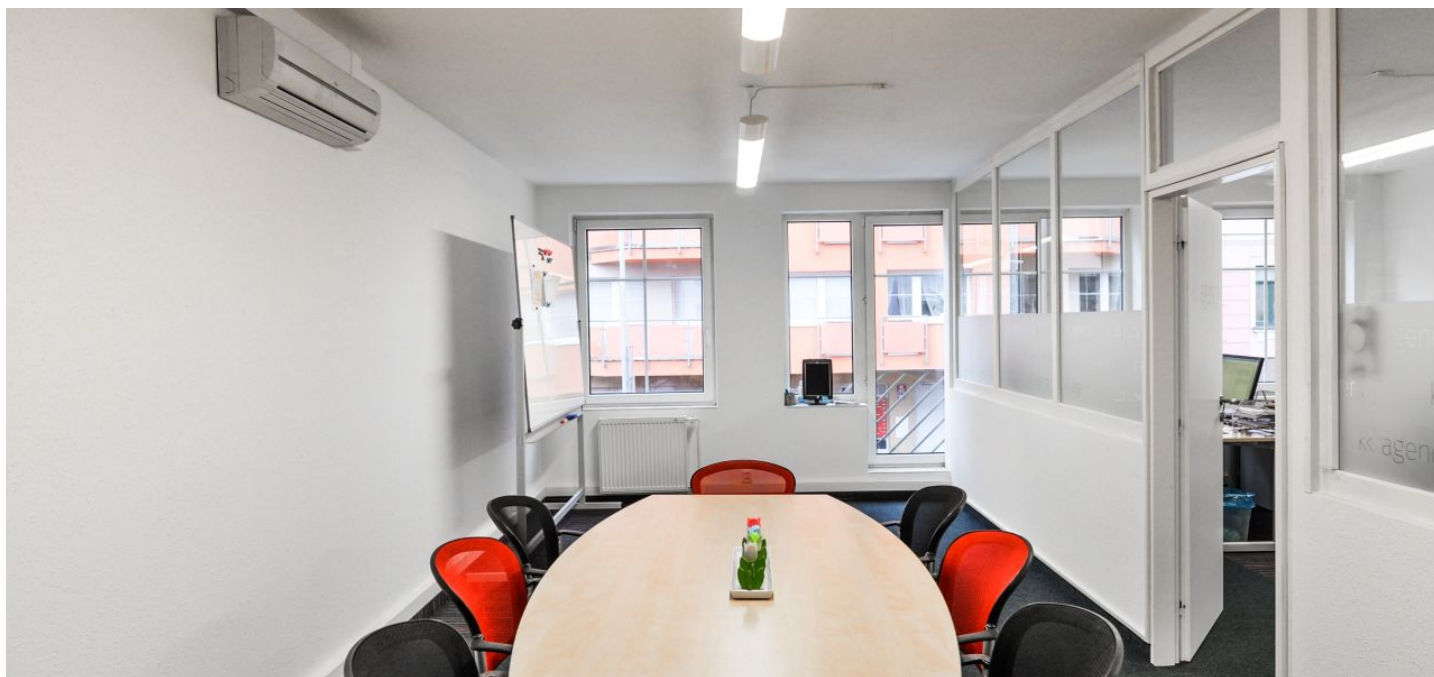


## Office space

Rented

Prague 6, Břevnov, Radimova



## Office space

Rented

Prague 6, Břevnov, Radimova

Service price	34 CZK monthly per m <sup>2</sup>
Available area	71 m <sup>2</sup>
Cellar	-
Parking	EUR 140 / ps / month
PENB	C
Reference number	28212

Office premises for lease on the 2nd floor of an administrative building located in an attractive part of Prague 6 – Břevnov.

**Location:**

Kajetánka Park and Břevnov Monastery are close to the building, which is located just a few minutes' walk from the bus stop. One of the main advantages of this building and its location is easy access to the city center.

**Features and services:**

- Air-conditioning in all units
- Gas heating
- Tiles and carpets
- Openable windows
- Lift
- Walkable roof
- Parking in the underground garage

Rental price **CZK 202/m<sup>2</sup>/month**. Rental and service charges are listed without VAT. Lessee pays no commission.

