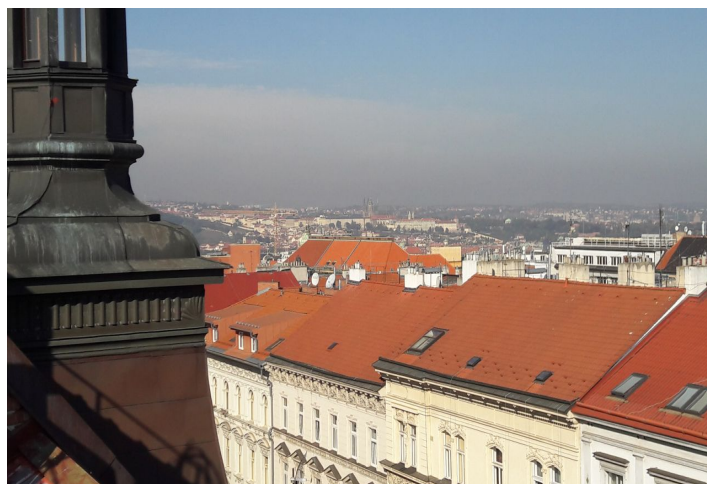


Apartment Three-bedroom (4+kk)

Sold

130 m², Prague 2, Vinohrady, Korunní



Apartment Three-bedroom (4+kk)

Sold

130 m², Prague 2, Vinohrady, Korunní

Total area	143 m ²
Floor area*	130 m ²
Terrace	13 m ²
Parking	-
Cellar	Yes
PENB	G
Reference number	28082

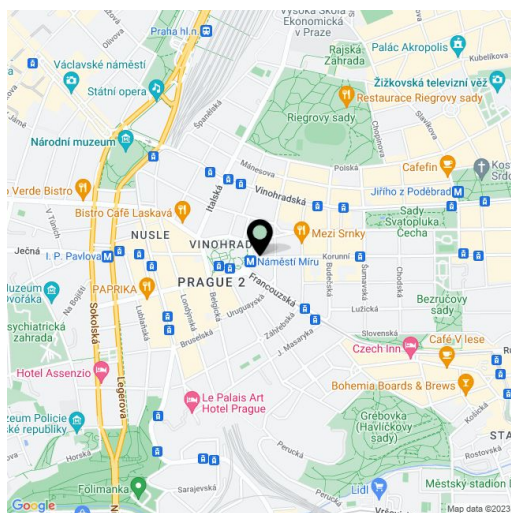
This newly emerging split-level attic apartment with a terrace is situated on the 6th and 7th floors of a residential building close to Svatopluk Čech Park in an attractive residential area, just a few steps from the Šumavská tram stop.

The lower level consists of 3 bedrooms, 2 bathrooms, a separate toilet, a walk-in closet, and an entry hall. The layout of the upper level offers a spacious living room (52 sq. m.) with a kitchen and dining area with access to the **terrace**, and a separate toilet with a sink.

The standard equipment of the apartment includes Quick Parquet two-layer oak floors, Impronta Italgraniti large-format tiles, Schuco aluminum sliding glass walls and triple-glazed skylights, Sapeli **interior doors with concealed hinges**, a NEXT highest security level entrance door, a Baxi gas boiler, quality bathroom fixtures (e.g. Laufen, Grohe), an audio entry phone, a preparation for air conditioning, white walls, and suspended plasterboard ceilings. The purchase price includes a **cellar**. The renovation of the common areas and the installation of the elevator took place at the same time as the construction of the apartment. A garage parking space is available for 1 year free of charge.

A popular residential area within easy reach of downtown Prague and within walking distance of Riegrovy sady Park. Full civic amenities in the area.

Interior 129.5 m², terrace 13.4 m².

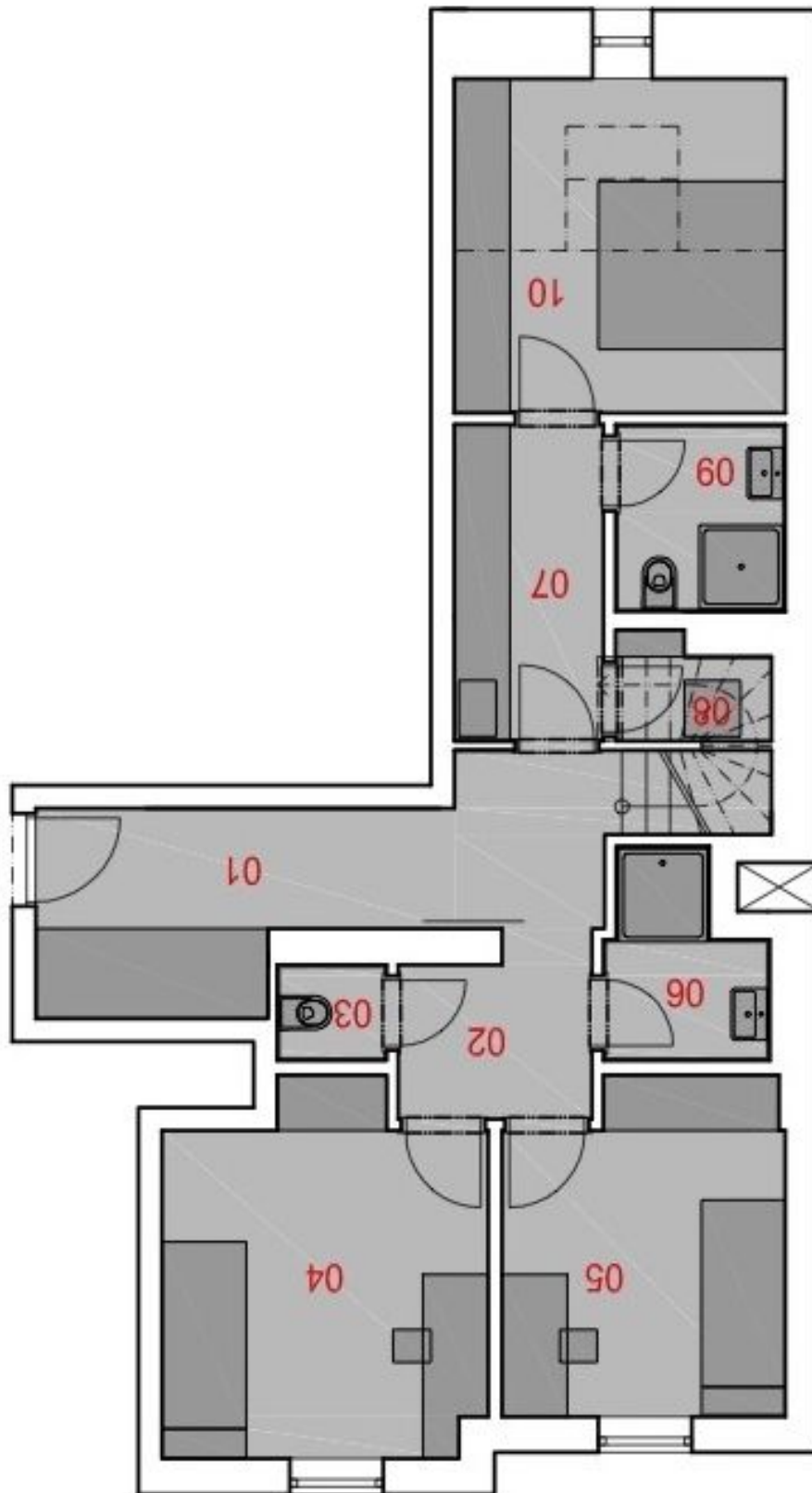


* Area of the unit according to the Civil Code. The area consists of the sum total area of the entire unit bounded by perimeter walls.

Apartment Three-bedroom (4+kk)

Sold

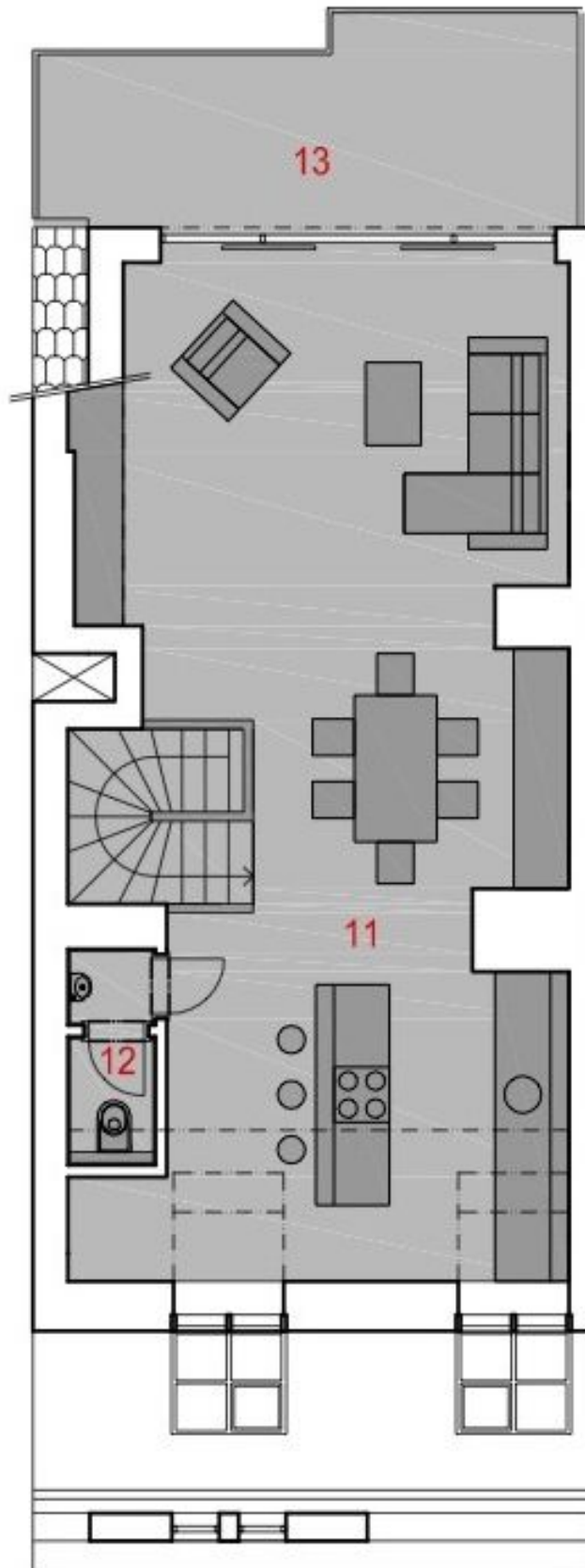
130 m², Prague 2, Vinohrady, Korunní



Apartment Three-bedroom (4+kk)

Sold

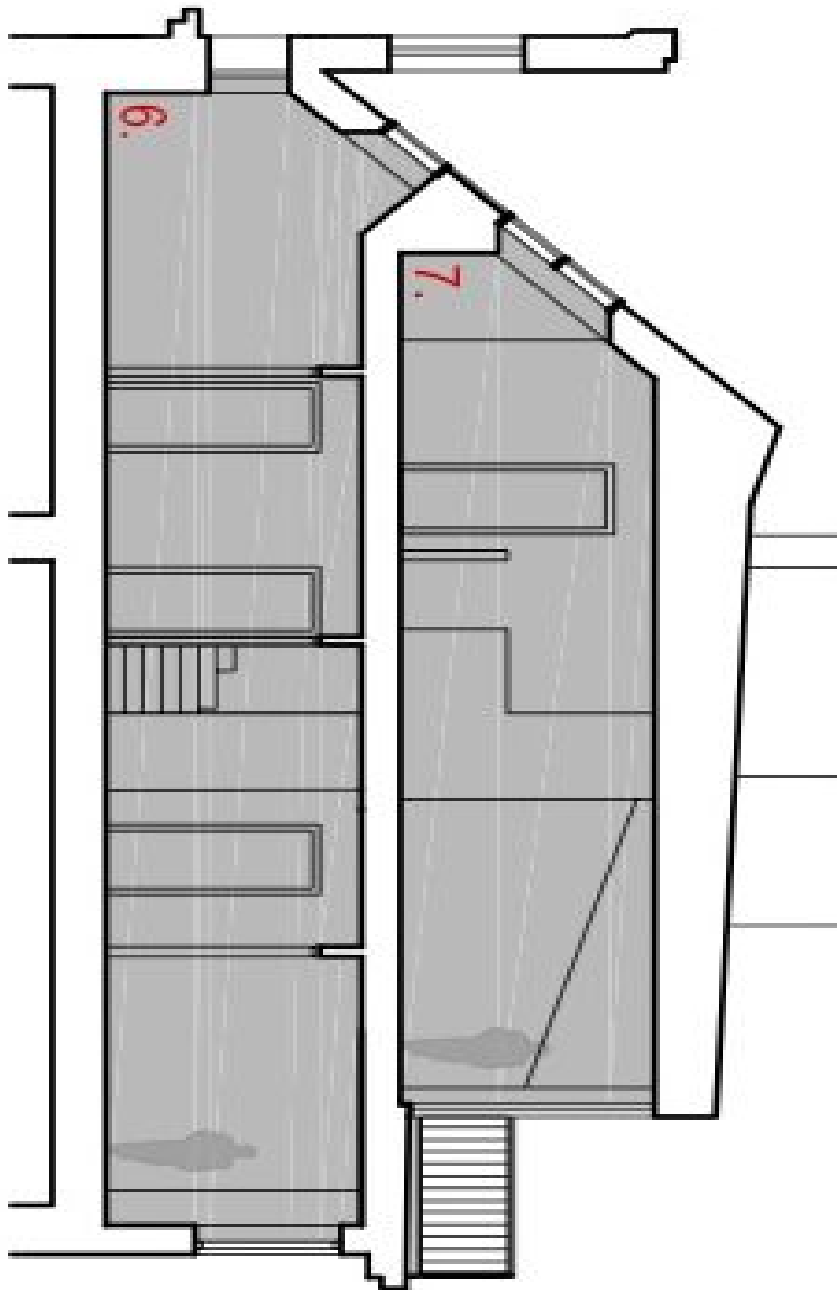
130 m², Prague 2, Vinohrady, Korunní



Apartment Three-bedroom (4+kk)

Sold

130 m², Prague 2, Vinohrady, Korunní



ŘEZ / SECTION