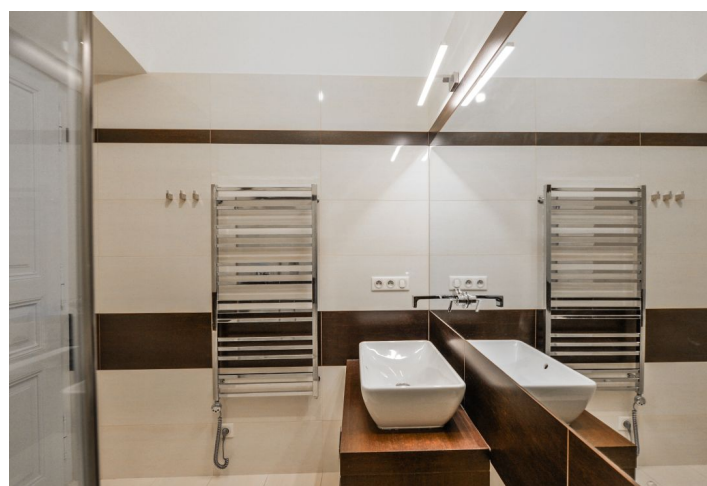


Apartment One-bedroom (2+kk)

Rented

50 m², Prague 2, Nové Město, Na Poříčním právu



Apartment One-bedroom (2+kk)

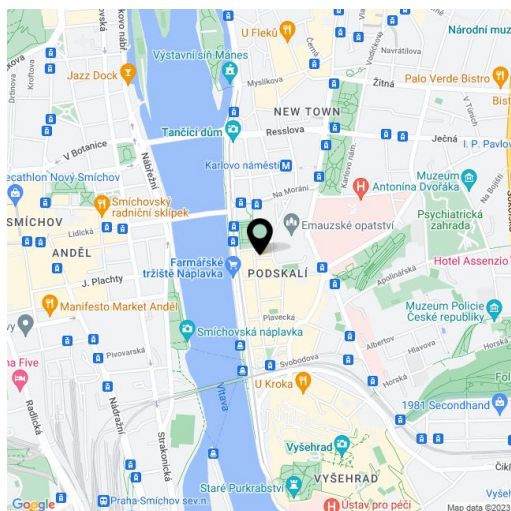
Rented50 m², Prague 2, Nové Město, Na Poříčním právu

Total area	50 m ²
Parking	-
Cellar	Yes
PENB	G
Reference number	28033
Available from	Immediately

Furnished renovated 1-bedroom flat with views of the Emauzy Monastery, on the fourth floor of a traditional residential building with lift. Centrally located in a quiet street just a two min. walk from the Vltava riverbank and Palackého / Karlovo náměstí metro station and tram links. A few min. by metro to the city center, full amenities within easy reach, near the Náplavka Riverbank with a popular regular produce market and bike path to Modřany. Within walking distance of the National Theater and Žofín Palace.

The interior features living room with a fully fitted open kitchen and dining area, one bedroom with lots of built-in wardrobes, shower bathroom, a separate toilet, and an open entrance hall with more built-in wardrobes.

Preserved original details, custom made furniture, **wooden floors**, tiles, floor heating in the bathroom, gas boiler, microwave oven, TV, shared basement storage, chip entry to the building. Cleaning service can be arranged. Common building charges and water CZK 750/person/month. Gas and electricity are billed separately. Available from January 2019.



* Area of the unit according to the Civil Code. The area consists of the sum total area of the entire unit bounded by perimeter walls.