

Apartment Two-bedroom (3+kk)

Rented

85 m², Prague 6, Dejvice, U Matěje



Apartment Two-bedroom (3+kk)

Rented

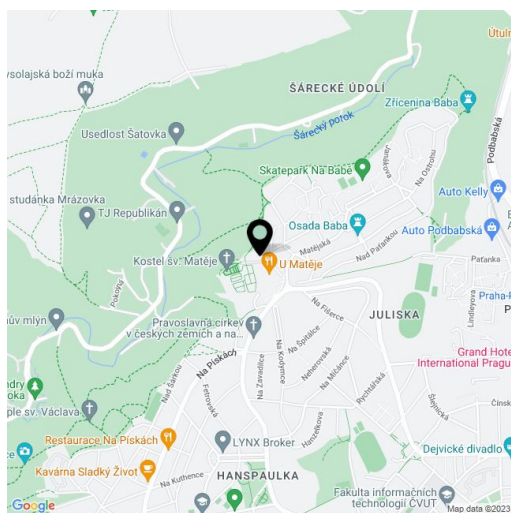
85 m², Prague 6, Dejvice, U Matěje

Total area	85 m ²
Parking	Garage parking.
Garage	Yes
Cellar	-
PENB	C
Reference number	27993
Available from	Immediately

Benefiting from a prestigious location, this is a fully air-conditioned 2-bedroom attic flat on the second floor of the new secure gated Hendlův dvůr Residence. The former homestead from the mid 16th century that has undergone a new meticulous renovation is situated in a cul-de-sac in a quiet green residential area on the edge of the highly sought after Hanspaulka neighborhood bordering the Šárka Valley. Location with quick access to the city center and amenities, bus connections to Bořislavka and Hradčanská metro, convenient to the airport and international schools, and moments from Juliska sports stadium.

The interior features living room with a fully fitted open kitchen, two bedrooms, a walk-through fitted **walk-in closet**, bathroom (bath with a shower screen, bidet, toilet), guest toilet, and an entrance hall.

Views of the St. Matthew Church, **wooden floors**, tiles, security entry door, central heating, heated floor in the bathroom, **heat recovery ventilation unit**, dishwasher, video entry phone, bike / pram storage in the building. Can be furnished with basic furniture. One **garage parking** space included. Common building charges and deposit for utilities around CZK 5000 per month. Available from May 2019.



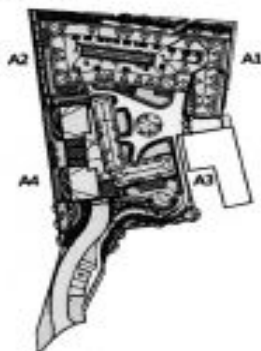
* Area of the unit according to the Civil Code. The area consists of the sum total area of the entire unit bounded by perimeter walls.

Apartment Two-bedroom (3+kk)

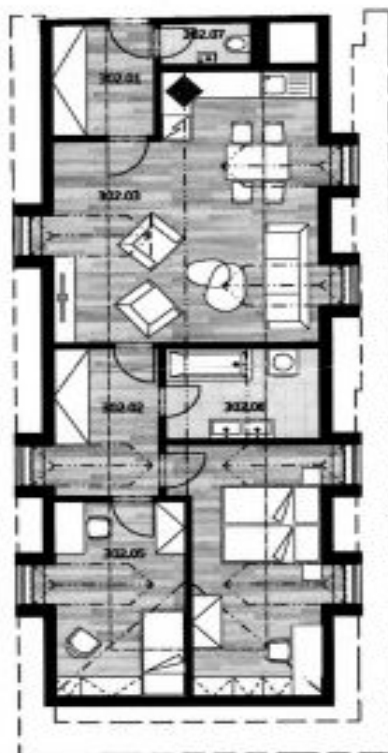
Rented

85 m², Prague 6, Dejvice, U Matěje

Situace



Sekce A1 - A3 / 3.NP



3+kk		PODLAH. PL.
302.01	CHODBA	5.23
302.02	CHODBA	7.56
302.03	OBÝVACÍ POKOJ + kk	31.25
302.04	LOŽNICE	16.56
302.05	POKOJ	12.06
302.06	KOUPELNA	6.48
302.07	WC	1.69
UŽITNÁ PLOCHA CELKEM *		—
OSTATNÍ PLOCHY (STĚNY, SLOUPY, PŘÍČKY)		4.40
CELKOVÁ PLOCHA BYTU		85.23

