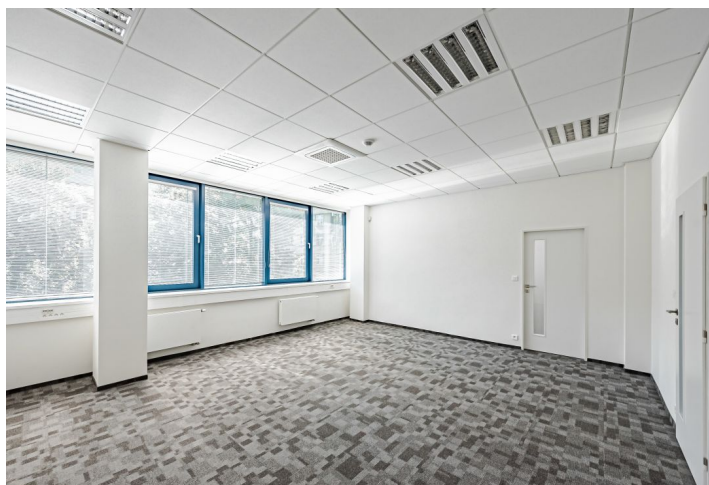


Office building

Rented

Prague 7, Holešovice, U Pergamenky



Office building

Rented

Prague 7, Holešovice, U Pergamenky

Service price	70 CZK monthly per m ²
Total building area	4 078 m ²
Tenant consumption	—
Parking	1 500 CZK
Parking service charges	—
Parking ratio	—
Certification	—
PENB	C
Reference number	27903

Eight-story administrative building with office space for lease situated in Prague 7 – Holešovice with renovated common areas on the ground floor.

Location:

The building is easily accessible by car and public transport – within walking distance of the Nádraží Holešovice metro station (line C), close to tram stops and a number of primary transportation routes, including access to the D1 and D8 highways.

Features and Services:

Openable windows
Load-bearing carpets - carpet squares 500x500
SDK system raster ceiling
LED luminaires system in raster ceiling and specification according to luminaire book, 500 LUX lighting at table top height
Air conditioning
Heating - radiators
Internal horizontal blinds
EZS basic (without cameras), ACS module at the entrance, SGK
1x kitchenette
2 parking spaces

Rental and service charges listed without VAT. Lessee pays no commission.

