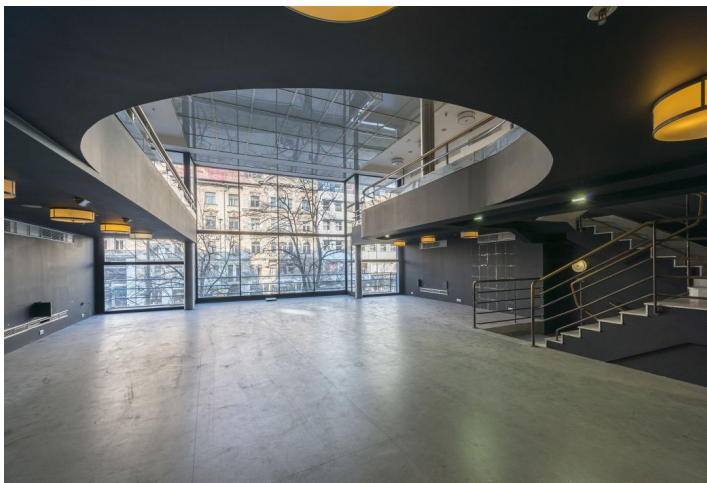
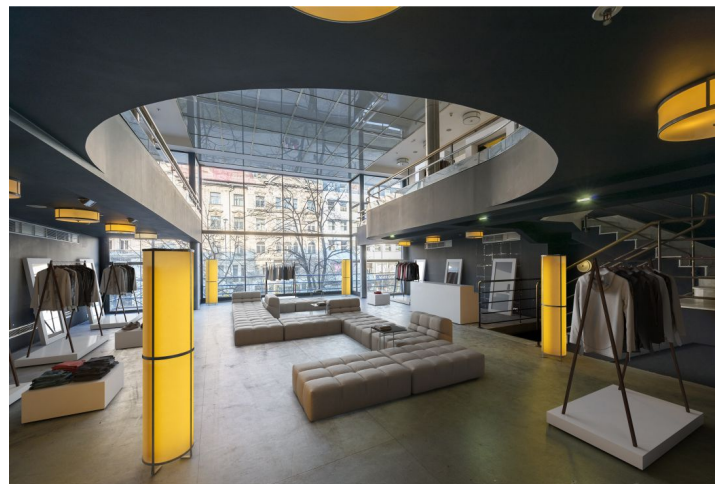


Retail space

Rented

Prague 1, Nové Město, Václavské nám.



Retail space

Rented

Prague 1, Nové Město, Václavské nám.

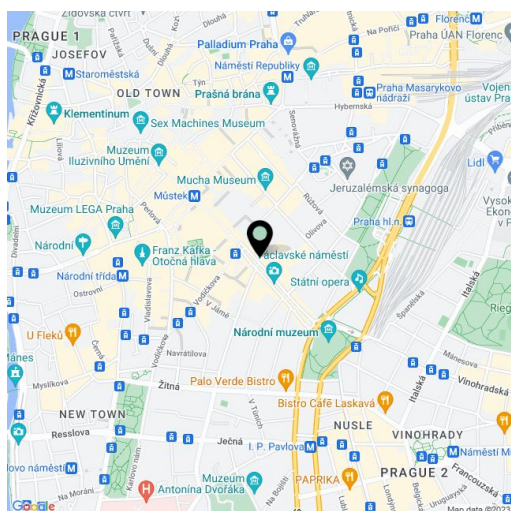
Service price	105 CZK monthly per m ²
Available area	517 m ²
Parking	-
PENB	G
Reference number	27893

Retail premises on the second floor of Julis Palace, a Functionalist hotel by famous architect Pavel Janák, built between 1928 - 31, located on Wenceslas Square. The lower part (324 m²) and the gallery (195 m²) are spatially connected by an internal staircase. Access to the premises is through the hotel staircase or lift. The premises are suitable for use as a café, showroom or gallery. All necessary connections, HVAC and lighting are available.

Location:

The building is situated in a very attractive location in the center of Prague, with excellent accessibility by public transport – Můstek (line A, B) and Muzeum (line A, C) metro stations and tram stops are nearby. Within walking distance to the Main Railway Station.

Rental and service charges listed without VAT. Lessee pays no commission.



Retail space

Rented

Prague 1, Nové Město, Václavské nám.

