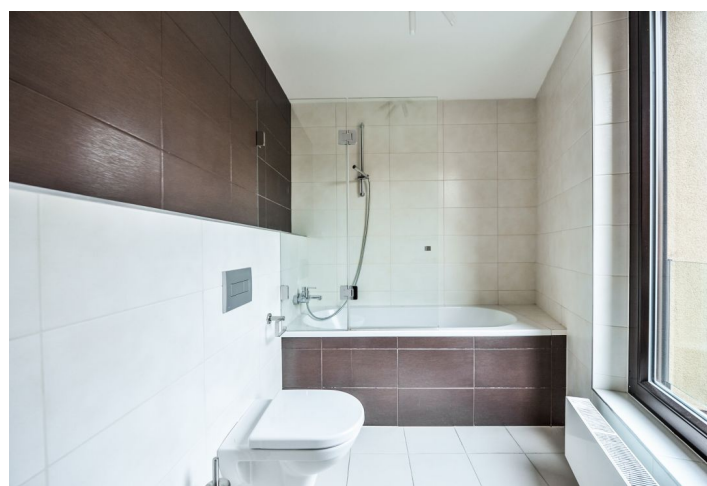
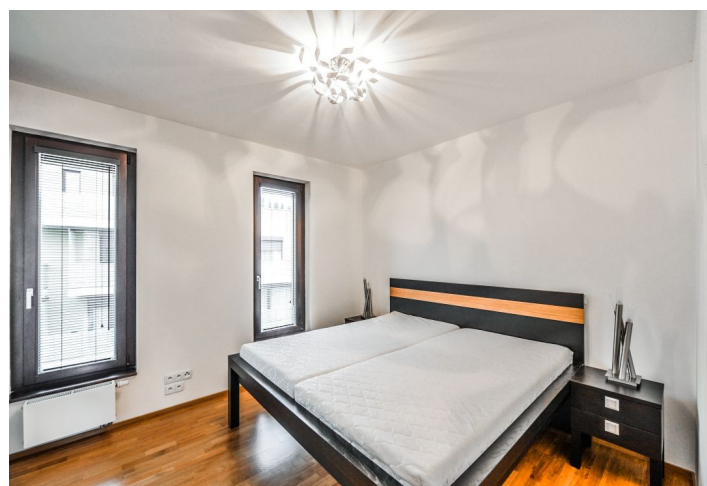


Apartment One-bedroom (2+kk)

Rented

70 m², Prague 4, Michle, Baarova



Apartment One-bedroom (2+kk)

Rented

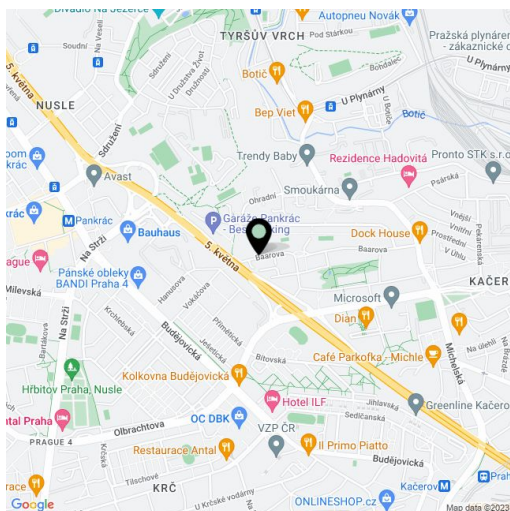
70 m², Prague 4, Michle, Baarova

Total area	78 m ²
Floor area*	70 m ²
Terrace	8 m ²
Parking	Two garage parking spaces.
Garage	Yes
Cellar	-
PENB	B
Reference number	27815
Available from	Immediately

Benefiting from a generous layout, this is a furnished 1-bedroom flat with an 8 m² terrace situated on the third top floor of a modern residential development with 24-hour reception, lift, security, park, children's playground and underground parking. Location with a full range of amenities, near the BB Centrum and Brumlovka multipurpose centers, with bus connections to Budějovická and Pankrác metro stations and quick access to the city center.

The interior includes living room with a fully fitted open kitchen and terrace facing the park, one bedroom, windowed en-suite bathroom (bathtub with a shower screen, double sink, bidet, toilet), a large fitted walk-in closet, a guest toilet, and entrance hall with built-in wardrobes.

New furnishings and equipment, wooden floors, tiles, lots of built-in wardrobes and storage, security entry door, French windows, blinds, washer, dishwasher, induction cooktop, American style fridge, microwave oven, TV, garden furniture, chip entry to the building. Two garage parking spaces included. Common building charges, water and heating CZK 6.000/month. Monthly deposit for electricity is billed separately.



* Area of the unit according to the Civil Code. The area consists of the sum total area of the entire unit bounded by perimeter walls.