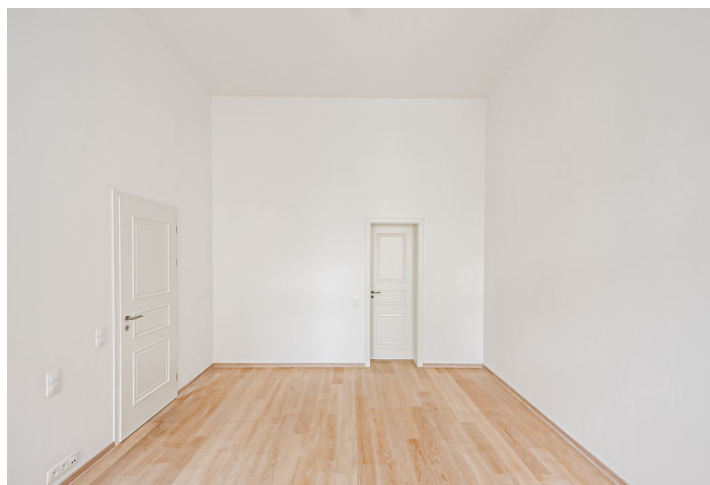
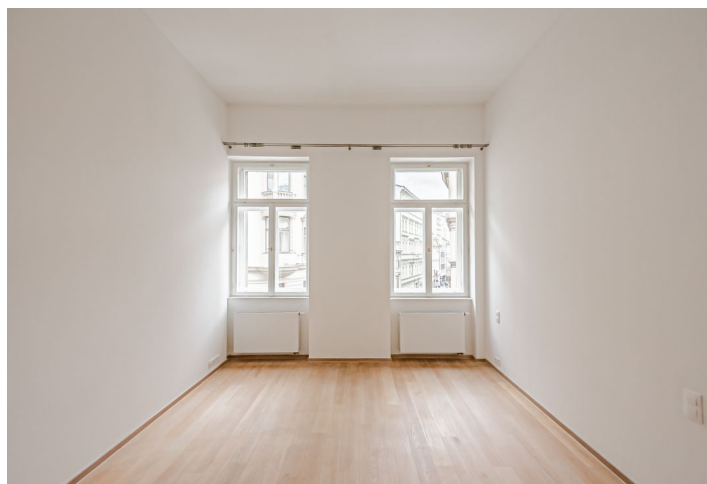


Apartment Two-bedroom (3+kk)

Rented

102 m², Prague 1, Nové Město, Jungmannova



Apartment Two-bedroom (3+kk)

Rented

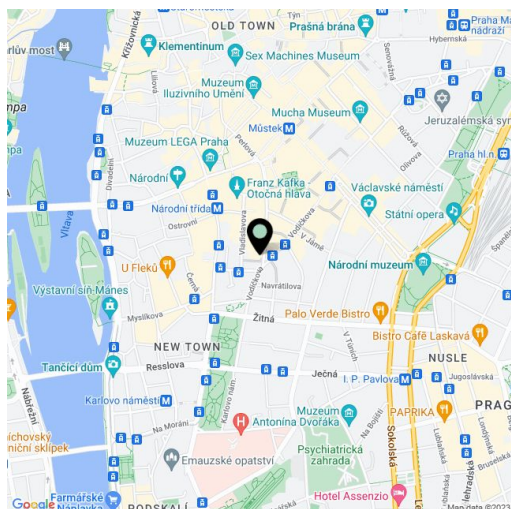
102 m², Prague 1, Nové Město, Jungmannova

Total area	124 m ²
Floor area*	102 m ²
Terrace	22 m ²
Parking	-
Cellar	-
Service price	Deposit for common building charges and water CZK 6,800/month. Electricity - transfer to the tenant.
PENB	G
Reference number	27614
Available from	Immediately

Benefiting from a prime central location and a 22 sq. m. courtyard terrace, this 2-bedroom 2-bathroom unfurnished apartment is situated on the second floor of a historic building that was completely rebuilt and modernized incl. a meticulously preserved original 1920s Art Deco facade and an internal passage connecting Jungmannova Street with Purkyňova and Vladislavova streets. The front facade in the style of German Expressionism was designed by architects Viktor Lampl and Otto Fuchs. This unique multifunctional building is located in the financial and commercial center of Prague moments from the new Quadrio shopping mall, with excellent access by public transport, a few minutes from the Národní třída metro station (line B) and tram line hub as well as the Můstek metro (lines A, B). A wide range of amenities and services available in close vicinity, quiet despite the central location.

The interior features a living room with a fully fitted open plan kitchen, a master bedroom with an en-suite bathroom (bathtub, bidet, toilet), a second bedroom, a family bathroom (walk-in shower, toilet), a walk-in closet with a utility area, and an entrance hall with access to the terrace in the courtyard of the building.

High standard materials and finishes, high ceilings, **oak floors**, tiles, heated bathroom floors, thermally insulated double-glazed windows, central gas heating, **granite kitchen worktop**, dishwasher, induction cooktop, microwave oven, **alarm**, video entry phone, chip entry to the building.



* Size of the unit according to the Housing Act.

The area consists of the sum total of the internal area of every room.

Apartment Two-bedroom (3+kk)

Rented

102 m², Prague 1, Nové Město, Jungmannova



TABULKA MÍSTNOSTI - 3.NPb			
č.m.	NAZEV MÍSTNOSTI	m ²	m ²
3.05	CHODBA	9,27	7,34
3.05a	VROVNANÍ CHODBA		7,34
3.05b	SKLOPĚNÉ SKLOPĚNÍ		1,93
3.06	SCHODIŠTĚ	25,93	
3.06a	SKLOPĚNÉ		11,33
3.06b	CHODBA		12,26
3.06c	VROVNANÍ SKLOPĚNÉ		2,34
3.07	ATELIER	64,97	
3.07a	CHODBA		6,82
3.07b	WC		2,89
3.07c	SKLPA		4,29
3.07d	ATELIER		30,47
3.07e	ATELIER		12,34
3.07f	KOPELMA		7,96
3.08	ATELIER	72,58	
3.08a	CHODBA		4,85
3.08b	KOPELMA		4,81
3.08c	SKLPA		4,19
3.08d	ATELIER		32,94
3.08e	ATELIER		18,62
3.08f	KOPELMA		7,18
3.09	BYT	104,52	
3.09a	CHODBA		12,25
3.09b	WC		3,91
3.09c	KUCHĚNĚ		8,55
3.09d	OBROVUJÍ PIVOJ		35,77
3.09e	LIDNICE		13,61
3.09f	CHODBA		3,80
3.09g	KOPELMA		8,03
3.09h	LIDNICE		18,10
3.10	BYT	102,41	
3.10a	CHODBA		11,81
3.10b	LIDNICE		14,89
3.10c	KOPELMA		3,87
3.10d	TECHNICKÁ MÍSTNOST		1,98
3.10e	OBROVUJÍ PIVOJ, KUCHĚNĚ		43,08
3.10f	LIDNICE		22,10
3.10g	KOPELMA		5,90
3.11	SCHODIŠTĚ	27,54	
3.11a	SKLOPĚNÉ		8,65
3.11b	CHODBA		16,06
3.11c	VROVNANÍ SKLOPĚNÉ		2,84
3.12	CHODBA	6,30	
3.12a	VROVNANÍ SKLOPĚNÉ		4,09
3.12b	SKLOPĚNÉ		2,30
CELKEM (bez výtahových šachet a dířel)		413,53	
V1	VÝTAHOVÁ ŠACHTA	2,63	
V2	VÝTAHOVÁ ŠACHTA	2,93	
A03	ATRIUM 03	24,88	
A04	ATRIUM 04	22,09	
TOTAL FLATS WITH AIRINGS			391,45
TOTAL FLATS WITHOUT AIRINGS			344,48