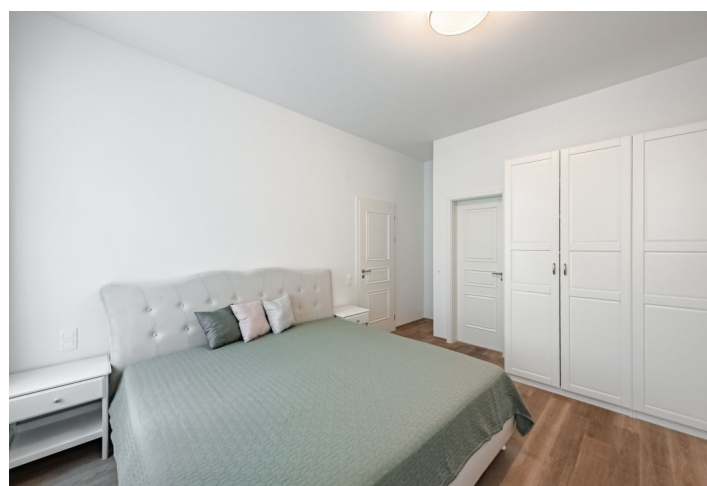
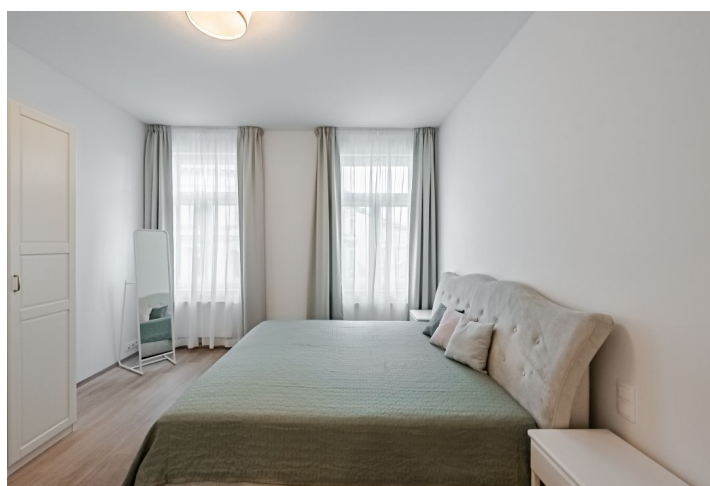


Apartment Two-bedroom (3+kk)

Rented

103 m², Prague 1, Nové Město, Jungmannova



Apartment Two-bedroom (3+kk)

Rented

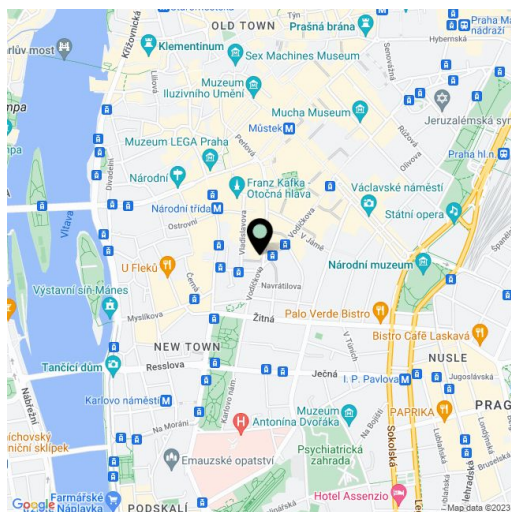
103 m², Prague 1, Nové Město, Jungmannova

Total area	103 m ²
Parking	-
Cellar	-
Service price	Deposit for common building charges and water CZK 6,500/month. Electricity will be transferred to the tenant.
PENB	G
Reference number	27612
Available from	Immediately

Benefiting from a prime central location, this 2-bedroom 2-bathroom furnished apartment is situated on the fourth floor of a historic building that was completely rebuilt and modernized incl. a meticulously preserved original 1920s Art Deco facade and an internal passage connecting Jungmannova Street with Purkyňova and Vladislavova streets. The front facade in the style of German Expressionism was designed by architects Viktor Lampl and Otto Fuchs. This unique multifunctional building is located in the financial and commercial center of Prague moments from the new Quadrio shopping mall, with excellent access by public transport, a few minutes from the Národní třída metro station (line B) and tram line hub as well as the Můstek metro (lines A, B). A wide range of amenities and services available in close vicinity, quiet despite the central location.

The interior features a living room with a fully fitted open plan kitchen, a master bedroom with a full en-suite bathroom, a second bedroom, a family bathroom (walk-in shower, bidet, toilet), and an entrance hall.

High standard materials and finishes, **oak floors**, tiles, heated bathroom floors, thermally insulated double-glazed windows, central gas heating, **granite kitchen worktop**, dishwasher, induction cooktop, microwave oven, curtains in all rooms, video entry phone, chip entry to the building.



* Area of the unit according to the Civil Code. The area consists of the sum total area of the entire unit bounded by perimeter walls.

Apartment Two-bedroom (3+kk)

Rented

103 m², Prague 1, Nové Město, Jungmannova



TABULKA MÍSTNOSTI - 5.NP		
č.m.	NÁZEV MÍSTNOSTI	m ²
5.01	SCHODIŠTĚ	23,82
5.01 a	SPALOVNĚ	8,29
5.01 b	CHODBA	15,54
5.02	SCHODIŠTĚ	23,11
5.02 a	SPALOVNĚ	13,28
5.02 b	CHODBA	9,74
5.03	BYT	82,49
5.03 a	CHODBA	5,81
5.03 b	KOPELNA	5,35
5.03 c	LÓŽNICE	9,03
5.03 d	KUCHYNĚ	7,15
5.03 e	OBYVACÍ POKOJ	35,57
5.03 f	LÓŽNICE	12,09
5.03 g	KOPELNA	7,06
5.04	BYT	105,42
5.04 a	CHODBA	12,86
5.04 b	KOPELNA	3,91
5.04 c	KUCHYNĚ	8,52
5.04 d	OBYVACÍ POKOJ	35,22
5.04 e	LÓŽNICE	13,61
5.04 f	CHODBA	3,87
5.04 g	KOPELNA	8,03
5.04 h	LÓŽNICE	18,40
5.05	BYT	72,07
5.05 a	CHODBA	11,47
5.05 b	KOCHYLA	3,35
5.05 c	KOPELNA	4,41
5.05 d	KUCHYNĚ	6,88
5.05 e	OBYVACÍ POKOJ	30,46
5.05 f	LÓŽNICE	12,24
5.05 g	KOPELNA	7,96
5.06	BYT	103,33
5.06 a	CHODBA	8,47
5.06 b	KOPELNA	5,29
5.06 c	LÓŽNICE	18,83
5.06 d	KOPELNA	7,44
5.06 e	LÓŽNICE	19,70
5.06 f	OBYVACÍ POKOJ	43,64
5.06 g	OBYVACÍ POKOJ	43,64
CELKEM (bez výtahových šachet)		415,24
V1	VÝTAHOVÁ ŠACHTA	2,63
V2	VÝTAHOVÁ ŠACHTA	2,93
TOTAL FLATS		368,31