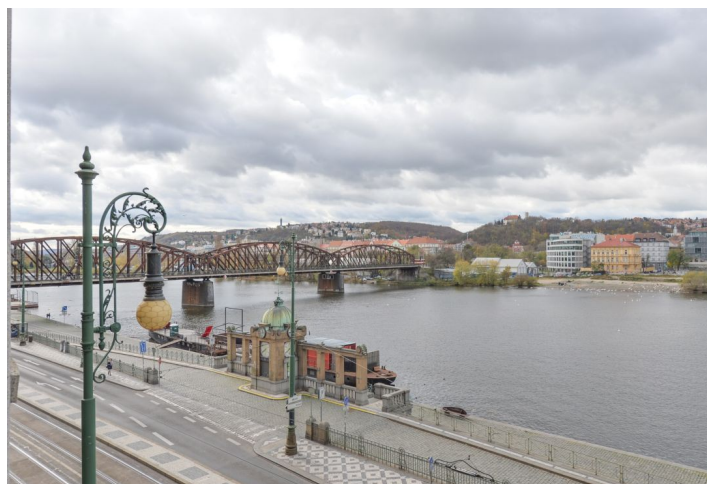
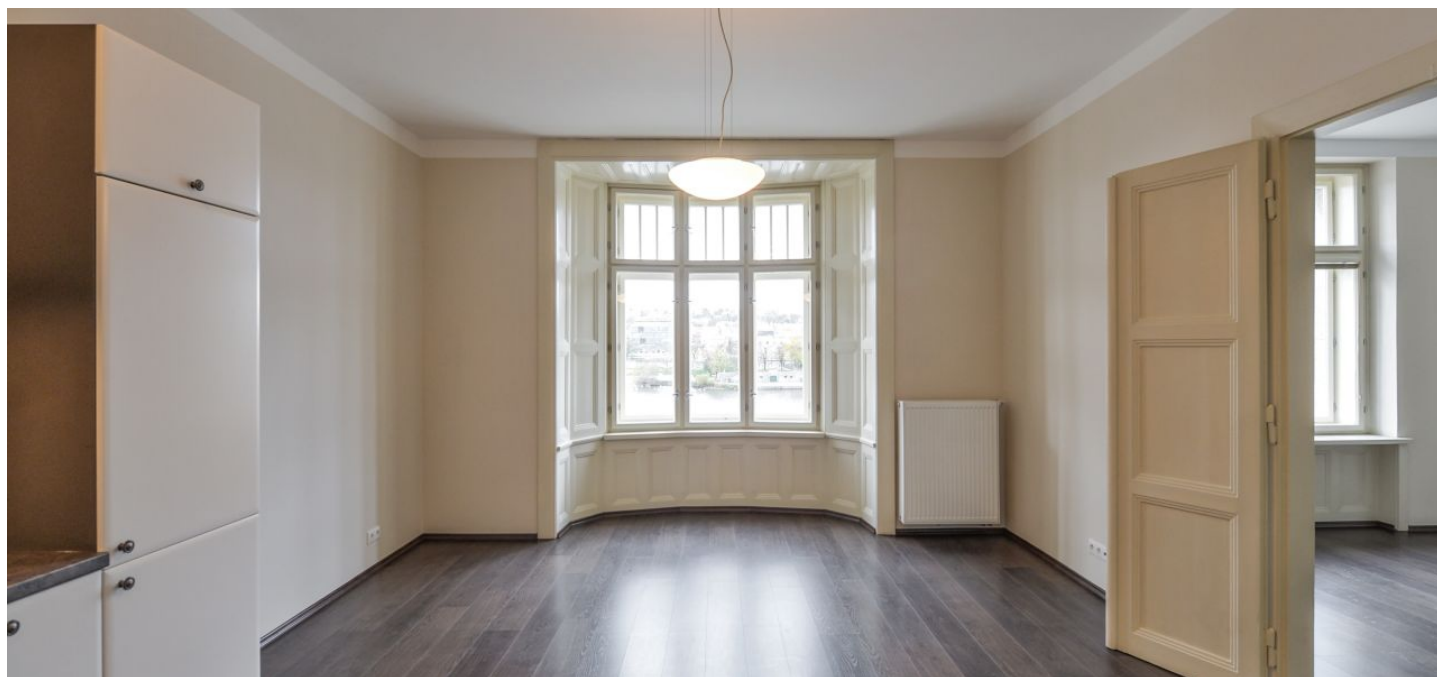


Apartment Two-bedroom (3+1)

Rented

104 m², Prague 2, Nové Město, Rašínovo nábřeží



Apartment Two-bedroom (3+1)

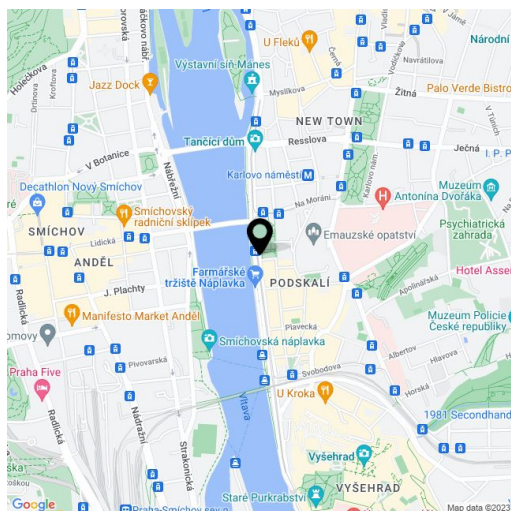
Rented104 m², Prague 2, Nové Město, Rašínovo nábřeží

Total area	104 m ²
Parking	-
Cellar	-
PENB	G
Reference number	27330
Available from	Immediately

Boasting wonderful views of the Vltava river, Petřín Hill and the Prague Castle, this is a renovated 2-bedroom flat on the second floor of a reconstructed traditional building with a new lift and camera system. Centrally located within easy reach of full amenities, just moments from Karlovo náměstí metro station and trams, and convenient to the French School.

The interior includes two separate bedrooms, living room, a fully fitted eat-in kitchen with bay windows, bathroom with bath and shower screen, a separate toilet, walk-in closet, and a large central entrance hall.

Preserved original details, high ceilings, large triple glazed windows, laminated floors, tiles, security entry door, combination gas boiler, dishwasher, shared balcony on the mezzanine floor. Common building charges CZK 1000/person/month. Gas and electricity will be transferred to the tenant.



* Area of the unit according to the Civil Code. The area consists of the sum total area of the entire unit bounded by perimeter walls.