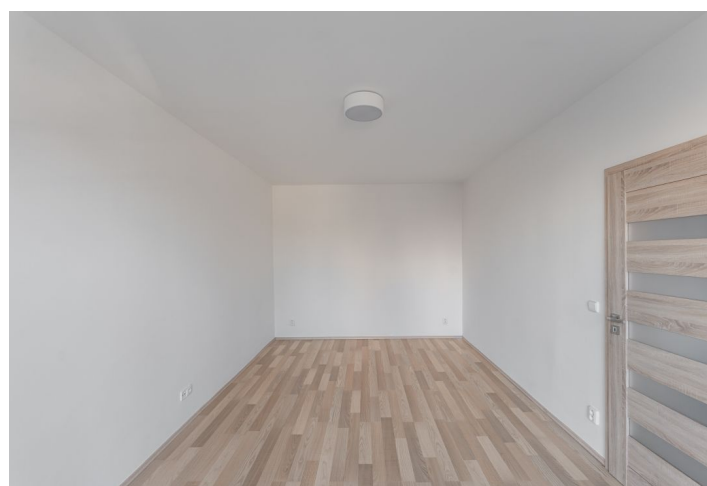


Apartment Two-bedroom (3+kk)

Rented

60 m², Prague 4, Michle, Na líše



Apartment Two-bedroom (3+kk)

Rented

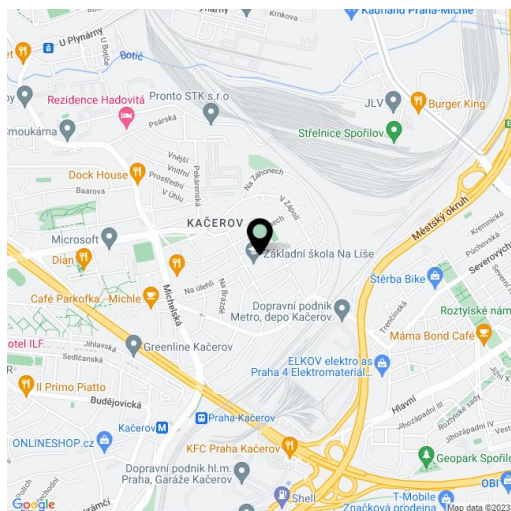
60 m², Prague 4, Michle, Na líše

Total area	84 m ²
Floor area*	60 m ²
Balcony	24 m ²
Parking	Parking on the plot can be arranged.
Cellar	-
Service price	Monthly deposit for services and heating CZK 4,000 for 2 persons. Electricity - transferred to the tenant.
PENB	B
Reference number	27092
Available from	Immediately

Modern unfurnished apartment with 3 balconies, situated on the raised ground floor of an apartment building with outdoor parking. On a quiet street in a residential area in a location with full civic amenities in close proximity, near the BB Centrum and Brumlovka multifunctional centers, with bus connections to the Budějovická and Kačerov metro stations and quick access to the center.

The apartment includes one smaller walk-through room with built-in wardrobes (possible to use as a walk-in closet or a study), one bedroom with a balcony, a living room with a fully fitted open plan kitchen and two balconies, a bathroom with a bathtub and toilet, and an entrance hall.

Laminate floors, tiles, French windows, blinds, washer, dishwasher, microwave oven, UPC cable, camera system, chip entry to the building. **Parking** can be arranged on the gated plot at CZK 1,500/month.



* Area of the unit according to the Civil Code. The area consists of the sum total area of the entire unit bounded by perimeter walls.