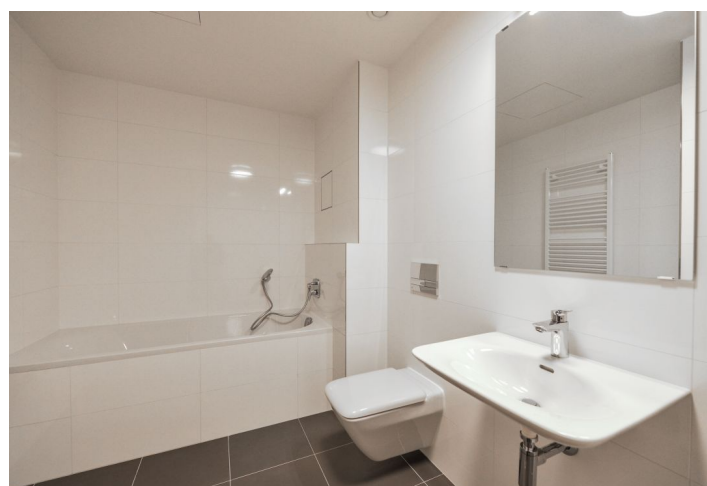


Apartment Two-bedroom (3+kk)

Rented

84 m², Prague 7, Holešovice, Sanderova



Apartment Two-bedroom (3+kk)

Rented

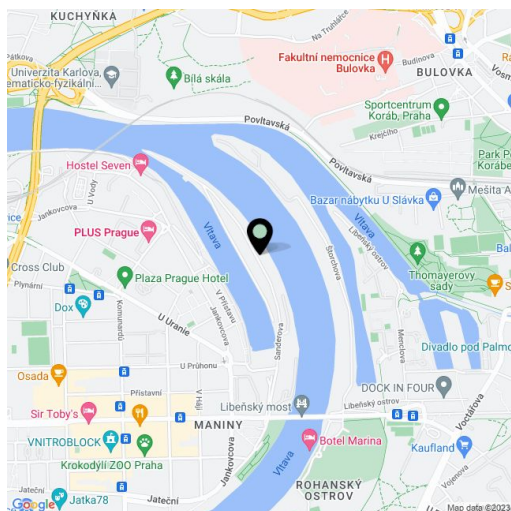
84 m², Prague 7, Holešovice, Sanderova

Total area	101 m ²
Floor area*	84 m ²
Terrace	17 m ²
Parking	Garage parking.
Garage	Yes
Cellar	Yes
PENB	B
Reference number	27079
Available from	Immediately

Benefiting from beautiful unobstructed views of the Vltava River and surrounding greenery is this brand new 2-bedroom flat with a 17 m² terrace. Situated on the sixth floor of the newly constructed residential project Marina Island, with 24/7 reception and security, camera system plus underground parking, right on the Vltava riverbank, in a fast growing Prague 7 area with quick connections to the city center and full amenities within easy reach. Tram connections to metro stations Palmovka, Nádraží Holešovice and Vltavská.

The interior includes two separate bedrooms, a living room with a fully fitted open kitchen and **terrace** overlooking the river, bathroom with bath and toilet, utility room, guest toilet, and entrance hall with built-in storage.

Wooden floors, tiles, French windows, security entry door, wardrobes in one bedroom, automatic outdoor blinds, **central switch**, dishwasher, video entry phone, cellar, lift. One **garage parking space** included. Deposit for common building charges, water and heating approx. CZK 6000 per month. Electricity is billed separately. Interior 84 m², terrace 17 m².



* Area of the unit according to the Civil Code. The area consists of the sum total area of the entire unit bounded by perimeter walls.