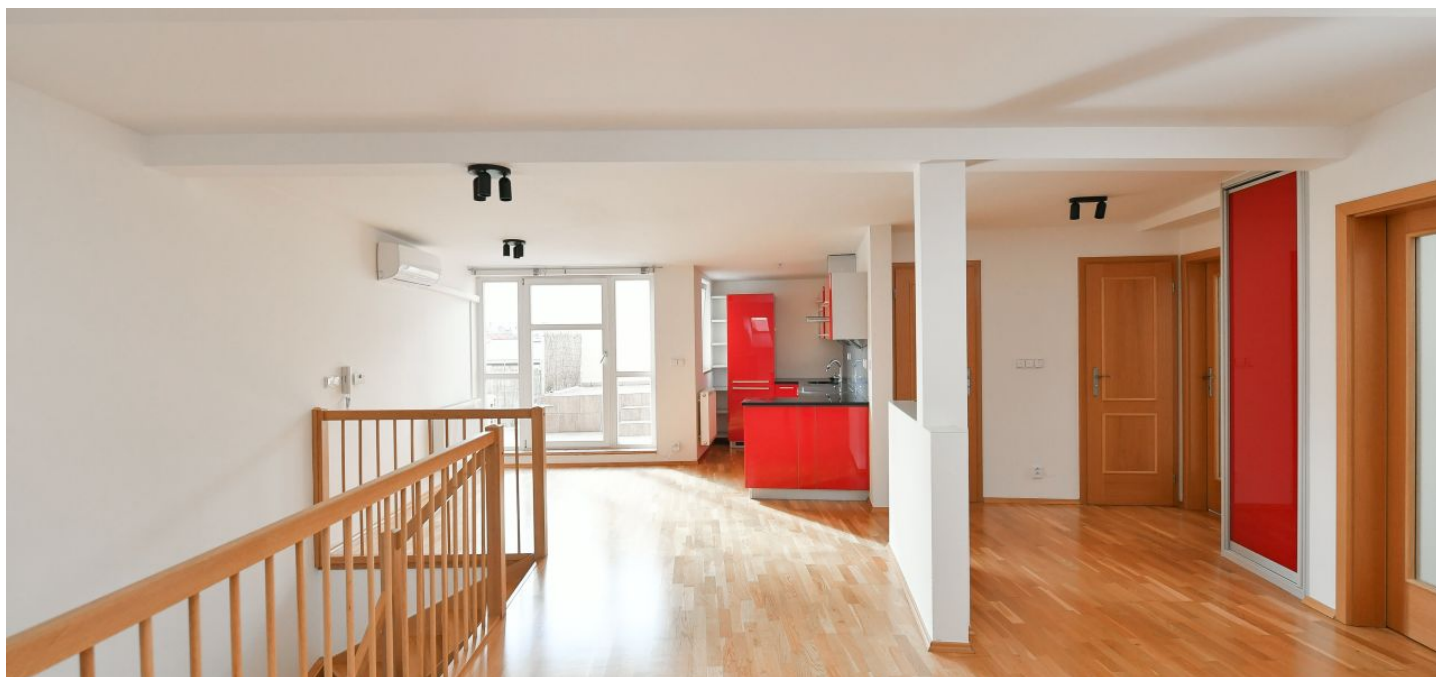


## Apartment Two-bedroom (3+kk)

Rented

95 m<sup>2</sup>, Prague 2, Vinohrady, Slezská



## Apartment Two-bedroom (3+kk)

Rented

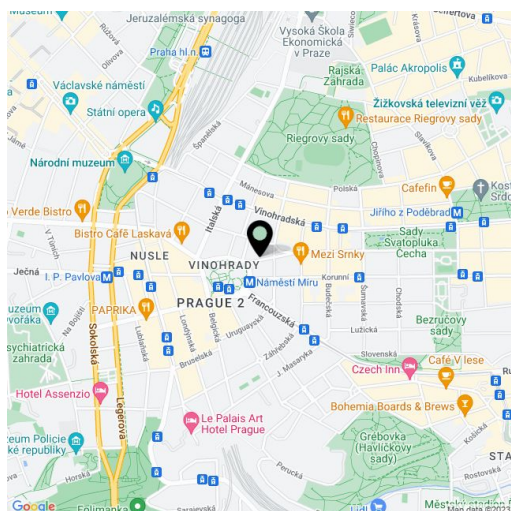
95 m<sup>2</sup>, Prague 2, Vinohrady, Slezská

|                  |   |
|------------------|---|
| Total area       | 105 m <sup>2</sup>  |
| Floor area*      | 95 m <sup>2</sup>   |
| Terrace          | 10 m <sup>2</sup>   |
| Parking          | -   |
| Cellar           | -   |
| Service price    | Monthly deposit for common building charges and water CZK 3,000. Electricity and gas are paid separately. |
| PENB             | Not required  |
| Reference number | 26915   |
| Available from   | Immediately   |

Sunny split-level unfurnished attic apartment with a lovely terrace, on the 6th floor of a well-maintained apartment building with an elevator, boasts an attractive location within walking distance of a Jiřího z Poděbrad metro station and the Atrium Flora shopping and entertainment center. A popular residential area with many popular restaurants, cafes, schools, and other services, within easy reach of a park and the farmers' markets on Jiřího z Poděbrad Square. Excellent connection to the city center thanks to the metro station and numerous tram lines.

The entrance hall to the apartment is on the lower floor where there is a staircase that leads to the upper floor, which consists of a spacious living room with a fully equipped kitchen, a dining area, and access to a **south-facing terrace**, 2 bedrooms, a bathroom with a shower, and a separate toilet.

Wooden floating floors, ceramic tiles, plastic French windows and **Velux wooden skylights** with interior roller blinds, **air-conditioning**, gas boiler.



\* Area of the unit according to the Civil Code. The area consists of the sum total area of the entire unit bounded by perimeter walls.