

Apartment Two-bedroom (3+kk)

Rented

83 m², Prague 5, Smíchov, Ke Klimentce



Apartment Two-bedroom (3+kk)

Rented

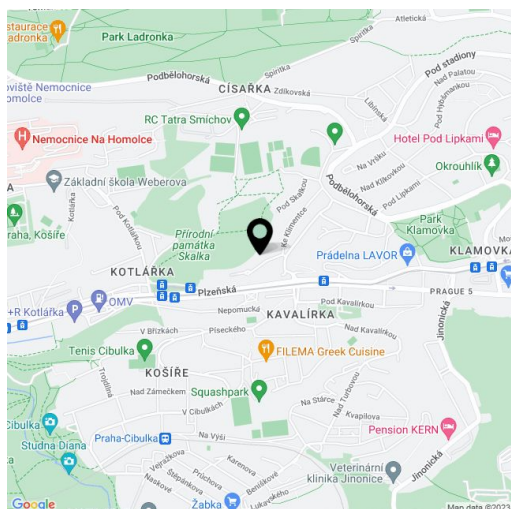
83 m², Prague 5, Smíchov, Ke Klimentce

| | |
|------------------|-------------------|
| Total area | 90 m ² |
| Floor area* | 83 m ² |
| Loggia | 7 m ² |
| Parking | Garage parking. |
| Garage | Yes |
| Cellar | Yes |
| PENB | G |
| Reference number | 26865 |
| Available from | Immediately |

Benefiting from a 7 m² enclosed balcony and far reaching green views, this is a 2-bedroom flat on the second floor of a modern building with a shared garden, camera system, security and underground parking. Located in a quiet and green Prague 5 residential neighborhood, just a few minute drive to the Anděl commercial and entertainment center and metro station, just a minute walk to trams at Plzeňská street, and convenient to the French School and the popular Ladronka Park.

The interior includes two separate bedrooms, living room with a fully fitted open kitchen, dining area and access to the enclosed balcony, bathroom with bath, a separate toilet, and entrance hall with lots of built-in wardrobes and storage.

Wooden floors, tiles, carpet, security entry door, built-in wardrobes in one bedroom, blinds, washer, dishwasher, microwave oven, TV, video entry phone, cellar. One garage parking space included. Deposit for common building charges, water and heating CZK 3250/month. Electricity is billed separately (current deposit CZK 1050/month). Interior: 83 m². Enclosed balcony: 7 m². Available from October 2017.

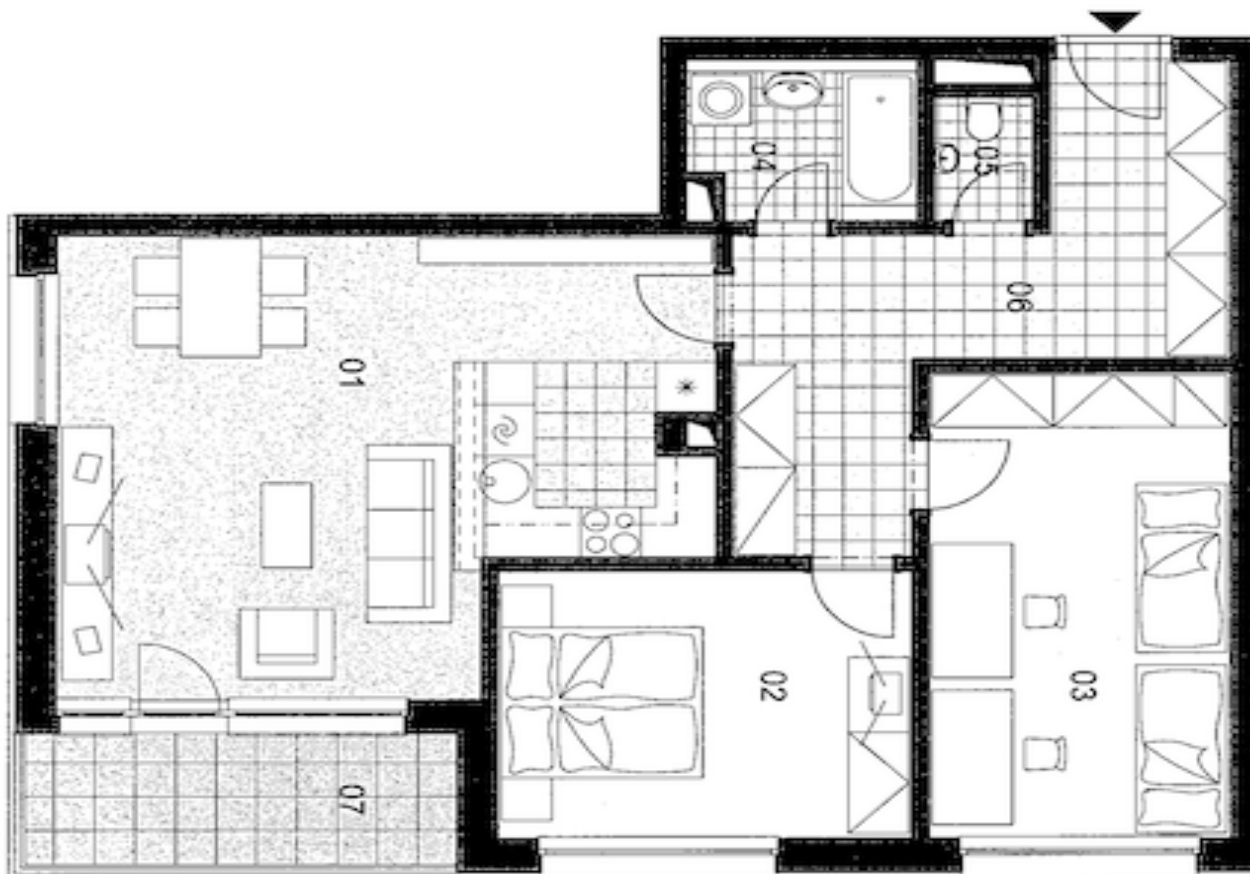


* Area of the unit according to the Civil Code. The area consists of the sum total area of the entire unit bounded by perimeter walls.

Apartment Two-bedroom (3+kk)

Rented

83 m², Prague 5, Smíchov, Ke Klimentce



| UŽITNÁ PLOCHA / NET AREA | m ² |
|---|----------------|
| 01 OBÝVACÍ POKOJ / LIVING ROOM | 31,8 |
| 02 LOŽNICE / BEDROOM | 13,2 |
| 03 POKOJ / ROOM | 16,6 |
| 04 KOUPELNA / BATHROOM | 4,3 |
| 05 WC / TOILET | 1,5 |
| 06 CHODBA / CORRIDOR | 16,1 |
| VNITŘNÍ PLOCHA / INT. TOTAL AREA | 83,5 |
| 07 LODŽIE / INT. BALCONY | 6,7 |
| PLOCHA CELKEM / TOTAL AREA | 90,2 |

