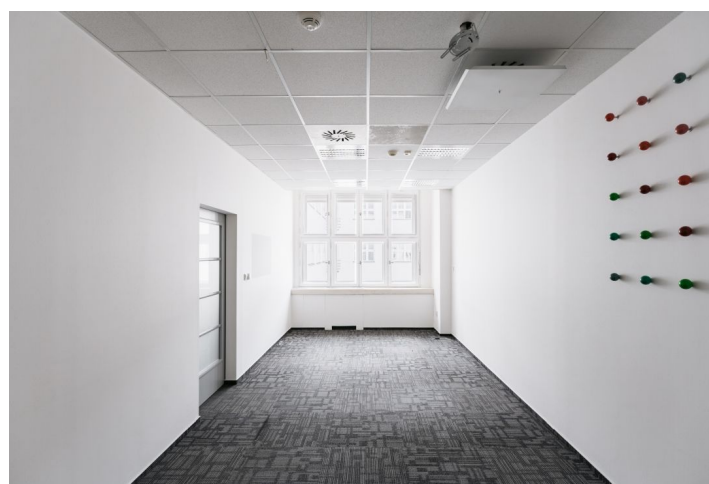
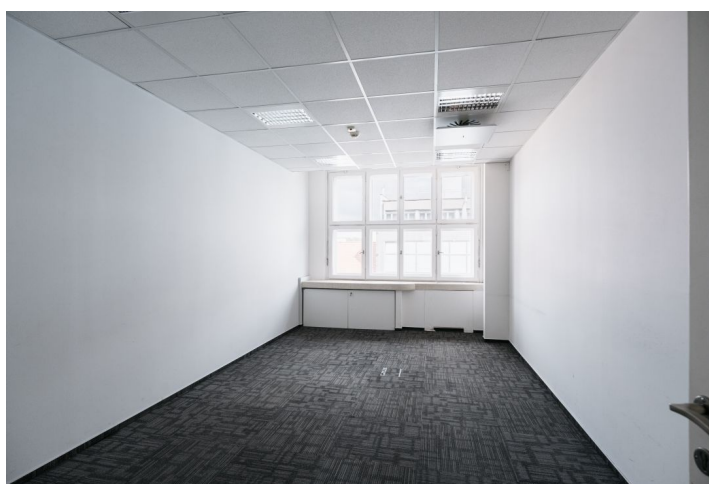
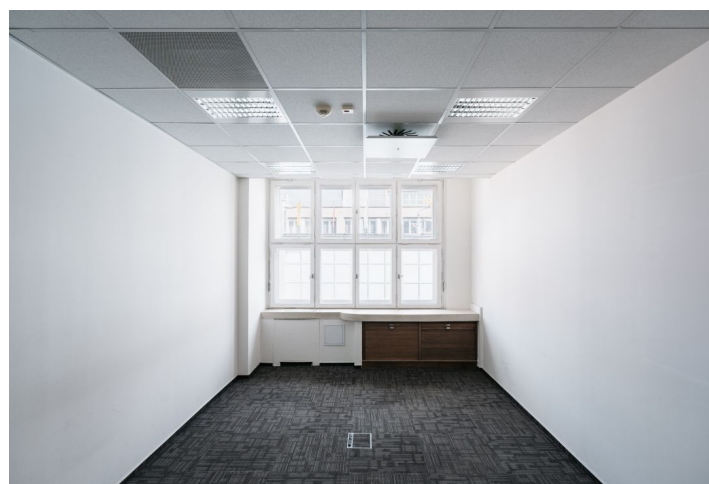
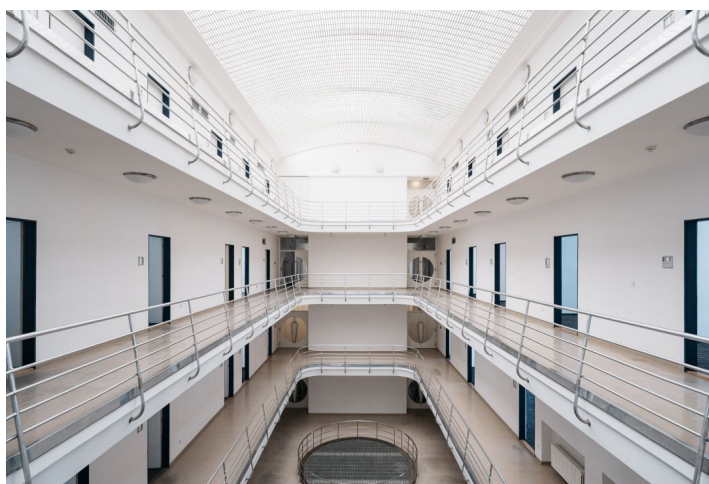
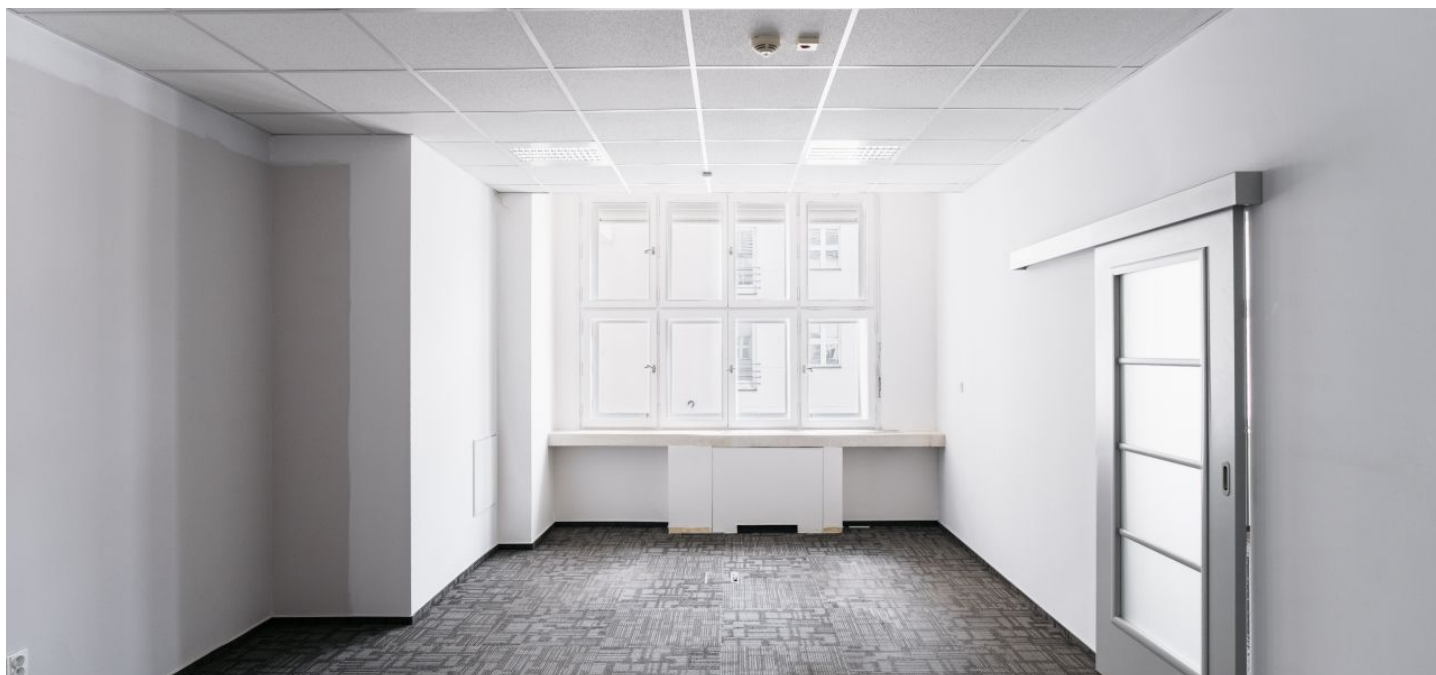


Office space

Rented

Prague 1, Nové Město, Na Poříčí



Office space

Rented

Prague 1, Nové Město, Na Poříčí

Service price	175 CZK monthly per m ²
Available area	977 m ²
Cellar	-
Parking	EUR 200 / ps / month
PENB	C
Reference number	26857

Office space for lease on the 5th floor in architecturally valuable complex in the center of Prague consisting of five interconnected buildings with great visibility from Na Poříčí Street. The building was designed by the famous architect Josef Gočár in a Rondocubist style. The basement theatre hall has also been renovated - the Archa Theatre boasts one of the most modern designs of the late 20th century in the Czech Republic.

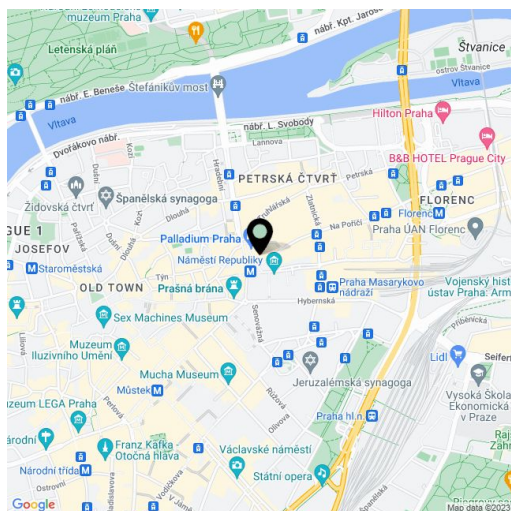
Location:

Perfect accessibility by public transportation and by car and train, well developed infrastructure. There is a tram stop close to the building, while the Florenc metro and central bus station (line B, C), and the Masaryk railway station are in the vicinity.

Features and Services:

- Reception desk
- Magnetic card access system
- 24-hour security service
- Modern elevators.
- Openable windows
- Raised floor in the offices
- Comfort cooling
- Four-pipe fan coil unit air-conditioning
- Suspended acoustic ceiling with integrated lighting
- New light distribution in the ceilings

Rental and service charges listed without VAT. Lessee pays no commission.



Office space

Rented

Prague 1, Nové Město, Na Poříčí



Office space

Rented

Prague 1, Nové Město, Na Poříčí

