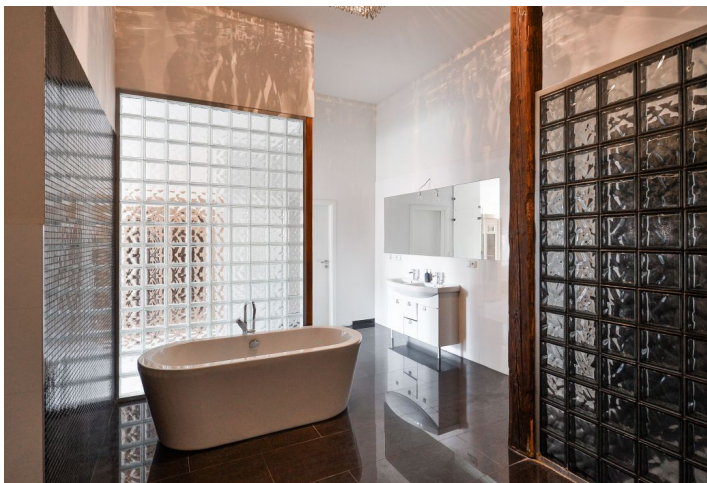


Apartment Three-bedroom (4+kk)

Rented

267 m², Prague 6, Dejvice, Eliášova



Apartment Three-bedroom (4+kk)

Rented

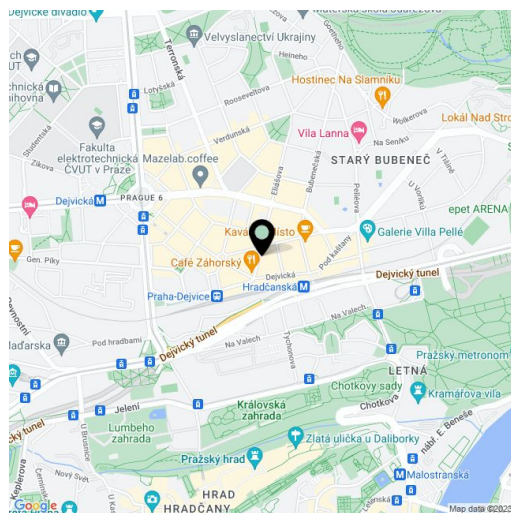
267 m², Prague 6, Dejvice, Eliášova

Total area	293 m ²
Floor area*	267 m ²
Terrace	26 m ²
Parking	-
Cellar	-
PENB	G
Reference number	26825
Available from	Immediately

Boasting a 26 m² terrace and a sauna, this is a spacious air-conditioned 3-bedroom 2-bathroom attic flat on the fifth top floor of a renovated traditional residential building from the early 20th century, with lift. Located in a lively Prague 6 neighborhood with excellent connections to international schools in Prague 5 and 6 as well as the airport. Full amenities in the area, Hradčanská and Dejvická metro stations are just minutes away, within walking distance of the Prague Castle, Stromovka and Letná Parks.

The interior features a fully fitted open kitchen with dining area walk-through to a spacious open living room, two bedrooms with large en-suite bathrooms, third bedroom, and utility room. There is a large entrance hall with built-in wardrobes and stairs leading up to the terrace overlooking the gardens in the courtyard.

Sauna, wooden floors and windows, carpets, heated tiles in the bathrooms, security entry door, gas boiler, washing machine, induction cooktop, dishwasher, coffee maker, alarm, video entry phone, chip entry to the building. Can be unfurnished. Common building charges and water CZK 2600 per month. Gas and electricity will be transferred to the tenant.



* Area of the unit according to the Civil Code. The area consists of the sum total area of the entire unit bounded by perimeter walls.