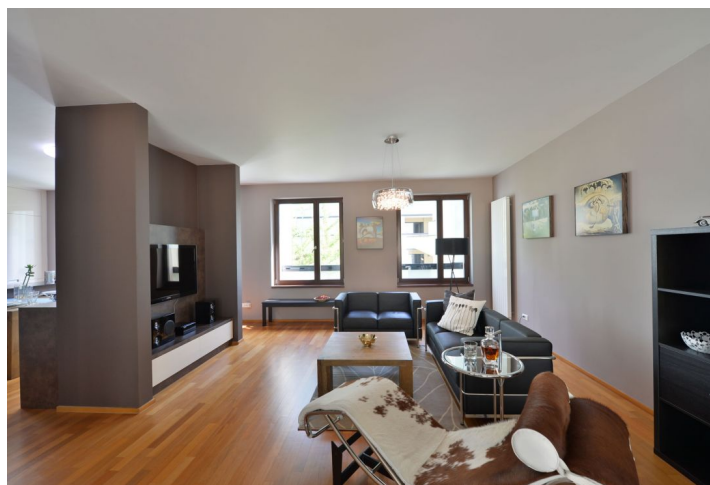
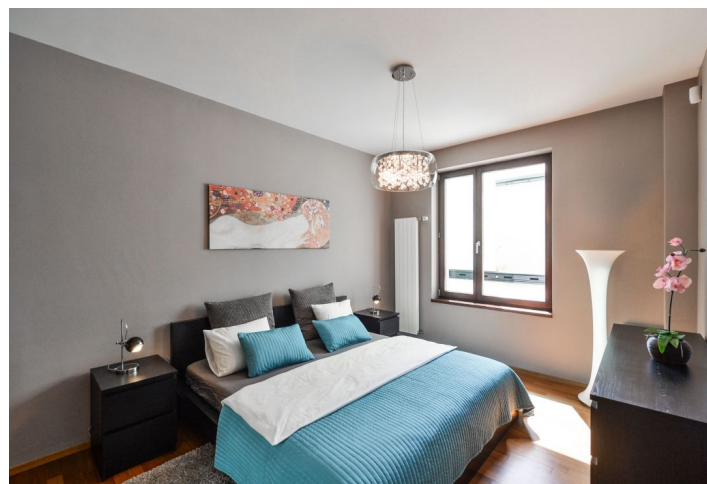


## Apartment One-bedroom (2+kk)

Rented

86 m<sup>2</sup>, Prague 8, Karlín, Šaldova



## Apartment One-bedroom (2+kk)

Rented

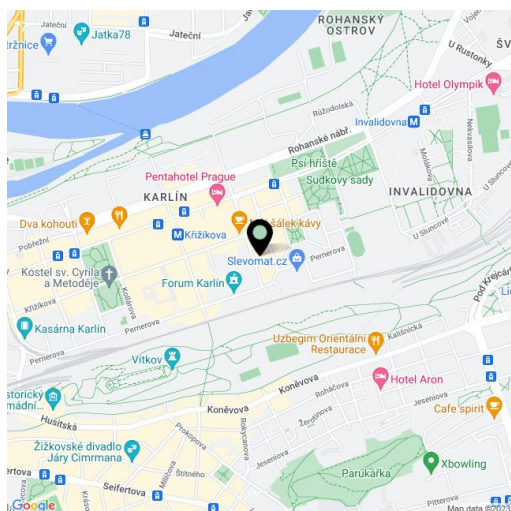
86 m<sup>2</sup>, Prague 8, Karlín, Šaldova

Total area	100 m <sup>2</sup>
Floor area*	86 m <sup>2</sup>
Loggia	14 m <sup>2</sup>
Parking	Garage parking.
Garage	Yes
Cellar	Yes
Service price	Deposit for common building charges, energies, and Internet CZK 7,850/month.
PENB	C
Reference number	26601
Available from	Immediately

**Modern fully furnished apartment with a 14 m<sup>2</sup> enclosed balcony situated on the 2nd floor of a completely reconstructed industrial building converted into a new development - Cornlofts Šaldova. Located on a quiet street in a rapidly developing Prague 8 area with full amenities within easy reach and quick connections to the city center, just three minutes from a tram stop and the Křížkova metro station. Building amenities include an elevator, a shared green landscaped courtyard, and underground parking.**

The interior features a comfortable living room with a fully fitted open plan kitchen, a dining area, and access to the large enclosed balcony facing the landscaped courtyard garden, one bedroom with built-in wardrobes, a bathroom with a bathtub, a separate toilet, and an open entrance hall with built-in wardrobes and storage.

Large windows, hardwood floors, security entry door, blackout blinds, washer with dryer, dishwasher, induction cooktop, microwave oven, TV, acellar, chip entry to the building and garage. One garage parking space with a wallbox included in the rent.

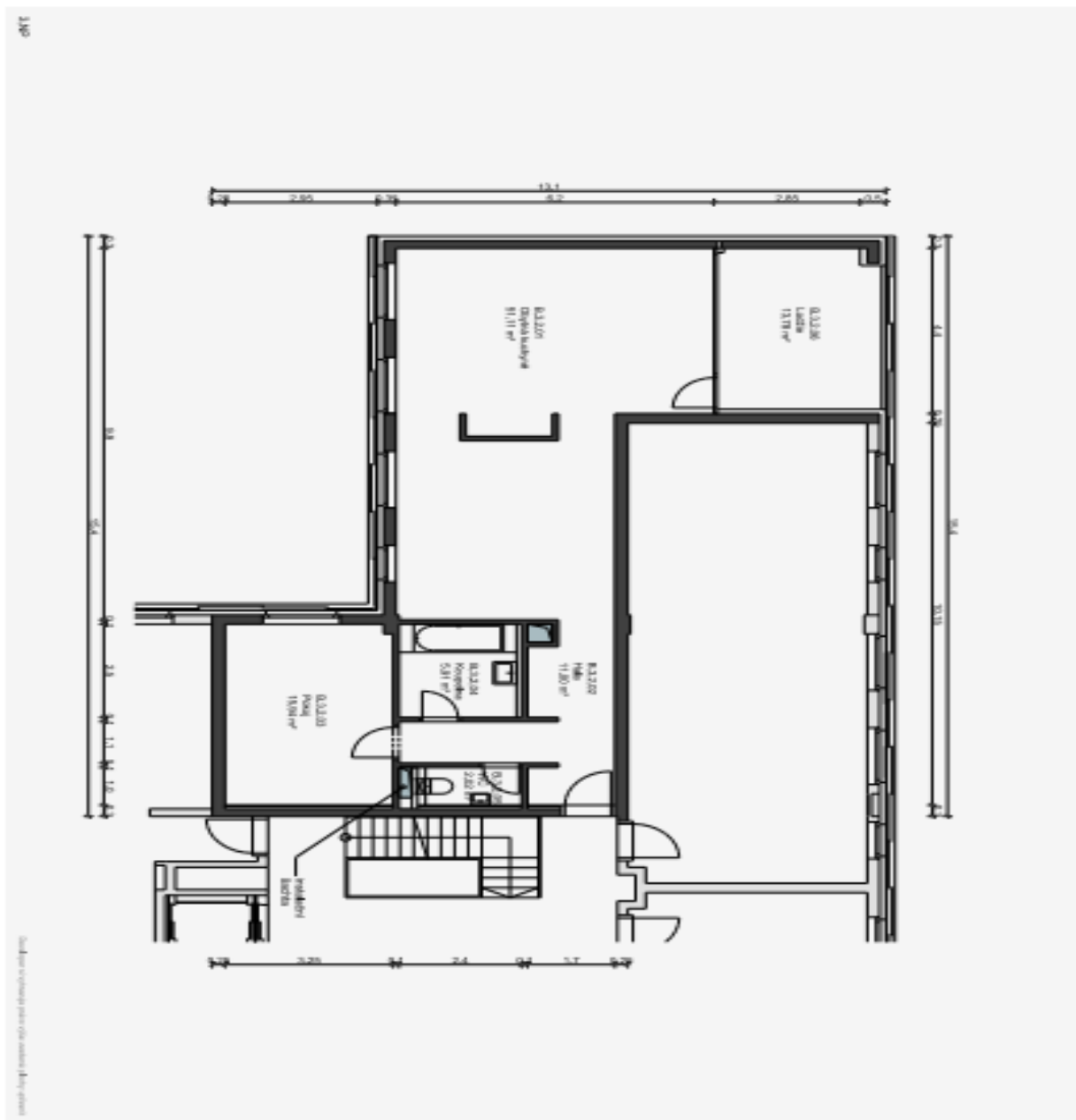


\* Area of the unit according to the Civil Code. The area consists of the sum total area of the entire unit bounded by perimeter walls.

# Apartment One-bedroom (2+kk)

Rented

86 m<sup>2</sup>, Prague 8, Karlín, Šaldova



Číslo	název	m <sup>2</sup>	
3P	B.3.201	ORP/VA KLIP/HRNĚ	11.11
3P	B.3.202	HLA	11.00
3P	B.3.203	PODOL	15.04
3P	B.3.204	KD/P/ML/KA	10.91
3P	B.3.205	WC	8.20
3P	B.3.206	CELKEM	85.26
3P	B.3.208	LODŽIE	13.78
CELKÁ PLOCHA PLOCHA CELKEM		85.26	
PLOCHA LODŽIE CELKEM		13.78	

**B1 B.3.2**  
2 + KK

# Apartment One-bedroom (2+kk)

Rented

86 m<sup>2</sup>, Prague 8, Karlín, Šaldova

